

BOSTON CONVENTION & EXHIBITION CENTER

Navigator

YOUR GUIDE TO A REMARKABLE BOSTON EXPERIENCE

Boston Dining
Activities & Attractions
Boston Neighborhoods

Signature
BOSTON™

Remarkable experiences.
Imagination realized.™

MASSACHUSETTS CONVENTION CENTER AUTHORITY

ESTABLISHED IN CHARLESTON, IL
IN 1983 TO ADD TO STUDENTS' GPA
AND GENERAL DATING ABILITY.

JIMMY JOHN'S®

Since **JJ** 1983

SANDWICHES

OK, SO MY SUBS REALLY AREN'T GOURMET AND WE'RE NOT FRENCH EITHER. MY SUBS JUST TASTE A LITTLE BETTER. THAT'S ALL I WANTED TO CALL IT JIMMY JOHN'S TASTY SANDWICHES, BUT MY MOM TOLD ME TO STICK WITH GOURMET. REGARDLESS OF WHAT SHE THINKS, FREAKY FAST IS WHERE IT'S AT. I HOPE YOU LOVE 'EM AS MUCH AS I DO! PEACE!
Jimmy John



\$6.25

8" SUB SANDWICHES

All of my sandwiches are 8 inches of homemade French bread, fresh veggies and the finest meats & cheese I can buy! We slice everything fresh daily in this store! It tastes better that way!

#1 PEPE®

Real wood smoked ham and provolone cheese, lettuce, tomato & mayo. (The original)

#2 BIG JOHN®

Medium rare choice roast beef, mayo, lettuce & tomato.

#3 TOTALLY TUNA®

Fresh housemade tuna, mixed with celery, onions, and our tasty sauce, sliced cucumber, lettuce & tomato. (My tuna rocks! Sprouts* optional)

#4 TURKEY TOM®

Fresh sliced turkey breast, lettuce, tomato & mayo. The original (Sprouts* optional)

#5 VITO®

The original Italian sub with genoa salami, provolone, capicola, onion, lettuce, tomato, & a real tasty Italian vinaigrette. (Hot peppers by request)

#6 THE VEGGIE

Layers of provolone cheese separated by real avocado spread, sliced cucumber, lettuce, tomato & mayo. (Truly a gourmet sub not for vegetarians only, Sprouts* optional)

J.J.B.L.T.®

Bacon, lettuce, tomato & mayo! (My B.L.T. rocks)



\$4.75

SLIMS™

Any Sub minus the veggies and sauce

SLIM 1 Ham & cheese

SLIM 2 Roast beef

SLIM 3 Tuna salad

SLIM 4 Turkey breast

SLIM 5 Salami, capicola, cheese

SLIM 6 Double provolone

Low Carb Lettuce Wrap

JJ UNWICH®

Same ingredients and price of the sub or club without the bread.

mom approved
Catering

★ **MINI JIMMYS**
(BEST FOR HALF SANDWICHES)
★ **BOX LUNCHES**
★ **PARTY PLATTERS**
★ WE PREFER 24 HOUR NOTICE
★ BUT IF YOU CALL, WE'LL DO WHAT WE CAN TO MAKE IT HAPPEN!

DELIVERY ORDERS may include a delivery charge.

\$9.25

THE J.J. GARGANTUAN®

The original gutbustub! Genoa salami, sliced smoked ham, capicola, roast beef, turkey & provolone, jammed into one of our homemade French buns, then smothered with onions, mayo, lettuce, tomato & our homemade Italian vinaigrette.

GIANT CLUB SANDWICHES

My club sandwiches have twice the meat or cheese, try it on my fresh baked thick sliced 7-grain bread or my famous homemade French bread! Tell us when you order!

#7 SMOKED HAM CLUB

1/4 pound of real wood smoked ham, provolone cheese, lettuce, tomato & mayo!

#8 BILLY CLUB®

Choice roast beef, smoked ham, provolone cheese, Dijon mustard, lettuce, tomato & mayo.

#9 ITALIAN NIGHT CLUB®

Genoa salami, Italian capicola, smoked ham and provolone cheese all topped with lettuce, tomato, onion, mayo & our homemade Italian vinaigrette. (Order it with hot peppers)

#10 HUNTER'S CLUB®

A full 1/4 pound of medium rare roast beef, provolone, lettuce, tomato & mayo.

#11 COUNTRY CLUB®

Sliced turkey breast, real wood smoked ham, provolone, and tons of lettuce, tomato & mayo! (A very traditional, yet always exceptional classic!)

#12 BEACH CLUB® Sprouts* optional

Fresh baked turkey breast, provolone cheese, avocado spread, sliced cucumber, lettuce, tomato and mayo!

#13 GOURMET VEGGIE CLUB®

Double provolone, real avocado spread, sliced cucumber, lettuce, tomato & mayo. (Try it on my 7-grain whole wheat bread. This veggie sandwich is really yummy! Sprouts* optional)

#14 BOOTLEGGER CLUB®

Roast beef, turkey breast, lettuce, tomato & mayo. An American classic!

#15 CLUB TUNA®

The same as our #3 Totally Tuna except this one has a lot more. Housemade tuna salad, provolone, sliced cucumber, lettuce & tomato. (Sprouts* optional)

#16 CLUB LULU®

Sliced turkey breast, bacon, lettuce, tomato & mayo. (JJ's original turkey & bacon club)

#17 ULTIMATE PORKER™

Real wood smoked ham and bacon with lettuce, tomato & mayo! (This one rocks!)

WE DELIVER! 7 DAYS A WEEK

BOSTON 413 D ST. 857.317.3947

"YOUR MOM WANTS YOU TO EAT AT JIMMY JOHN'S!"



*WARNING: THE DEPARTMENT OF HEALTH ADVISES THAT EATING RAW OR UNDER-COOKED SPROUTS POSES A HEALTH RISK TO EVERYONE, BUT ESPECIALLY TO THE ELDERLY, CHILDREN, PREGNANT WOMEN, AND PERSONS WITH WEAKENED IMMUNE SYSTEMS. THE CONSUMPTION OF RAW SPROUTS MAY RESULT IN AN INCREASED RISK OF FOODBORNE ILLNESS. FOR FURTHER INFORMATION, CONTACT YOUR PHYSICIAN OR LOCAL PUBLIC HEALTH DEPARTMENT.
©1985, 2002, 2003, 2004, 2007, 2008, 2013, 2014 JIMMY JOHN'S FRANCHISE, LLC. ALL RIGHTS RESERVED. We Reserve The Right To Make Any Menu Changes.

Welcome to the Boston Convention & Exhibition Center



Welcome to the BCEC and Boston, America's premier convention city. Along with the most technologically advanced facilities in the world, we are proud to provide you with our unparalleled Signature Boston customer service and deliver experiences beyond your expectations. In fact, our extraordinary service is internationally recognized — the BCEC has earned 'Gold Standard' certification from the International Association of Congress Centres (AIPC), the highest certification a convention center can receive.

We don't want you to miss a thing on your visit, and that's why we've created *The BCEC Navigator*, your user guide to the BCEC, and beyond. Inside you will find information to make navigating the BCEC simple.

The BCEC is located in one of Boston's fastest growing neighborhoods: the South Boston Waterfront. While you're here, you are just a short walk from some of the newest and most popular restaurants run by renowned Boston chefs. You can find them all, and a map with directions, right inside this guide. *The Navigator* also includes tips on what to do in and around the South Boston Waterfront to make your Boston experience unique and fun.

On behalf of the entire team at Signature Boston, thank you for visiting the award-winning BCEC. We are thrilled you are here today and guarantee you will have an extraordinary visit. Here's to a great event!

Maureen Shea Baker

Maureen Shea Baker
General Manager
Massachusetts Convention Center Authority





BOSTON CONVENTION & EXHIBITION CENTER

Navigator

Summer/Fall 2016



**Eat Drink
Play Chill**



From now through October, explore Boston's most innovative and dynamic outdoor event space located next to the BCEC. The Lawn On D is open to visitors daily at 7am, except when closed for private events. Enjoy complimentary lawn games and a full menu of food and drinks for purchase from Friday to Sunday.



Powered by
Citizens Bank®

For more information and a schedule of events, visit LawnOnD.com

@LawnOnD
 /TheLawnOnD
 @LawnOnD
 LawnOnD

The BCEC Navigator is published by the Massachusetts Convention Center Authority.
415 Summer Street
Boston, MA 02210
617-954-2000
SignatureBoston.com

General Manager
Maureen Shea Baker

Director of Guest & Exhibitor Services
Kristen O'Malley

Guest Services Manager
Caitlin Potolicchio

Production & Design

Vice President of Convention Center Marketing
Caryn Izhar

Director of Advertising & Sponsorship
Stephanie Shalkoski

Advertising Sales
Jessica Flaherty

Graphic Design
Rose Phan

The publishers have made every attempt to present accurate information in *The BCEC Navigator*, but are not responsible for errors or omissions. When utilizing facilities or vendors outside the BCEC, please call ahead to verify information.

Copyright 2016, Massachusetts Convention Center Authority. All rights reserved.

What's Inside

Getting around the BCEC

Hospitality at Your Service	4
About the BCEC	5
Your Mobile Workplace	6
Take a Break	6
Vital Information	8
BCEC Building Map	9
Where to Eat at the BCEC	10
	14

Getting Here from There

Public Transit	16
Logan International Airport	17
South Station	17
Park-and-Ride	19
Driving Yourself	19
America's Walking City	20
Wheels around Town	20
Public Transit Map	21
	22

Boston Dining

Listings	24
Area Map	25
	30

Activities & Attractions

Listings	32
	33

Boston Neighborhoods

	34
--	----

Thanks to our sponsors:





Getting around the BCEC

Welcome! The BCEC Navigator is your personal tour guide for the largest convention center in the Northeast! Throughout this guide you will find maps, helpful tips, and even things to do when the day is done. The Navigator gets you where you need to be, quickly and easily, to make sure your visit is an enjoyable one.

Hospitality at Your Service

GUEST SERVICES AMBASSADORS

When you arrive at the BCEC, you will immediately notice our welcoming staff of Guest Services Ambassadors. They are easily identified



by their red blazers and are strategically stationed throughout the facility. While they are there to assist you with questions about the BCEC and can easily aid you in finding your meeting room or other destination, they are also ambassadors in the truest sense of the word. Most of the staff have lived in the Boston area their entire lives, and are thrilled to assist you with restaurant recommendations or places to visit outside of the BCEC. Everyone on the BCEC staff loves interacting with our guests, so if you have a question, don't be shy! They are there to help.

PUBLIC SAFETY OFFICERS



Our Public Safety Officers provide a friendly sense of security, keeping our clients and guests safe and comfortable throughout their

event. While we hope that you never need it, all of our Public Safety Officers are CPR certified and highly trained to handle any emergency, giving you peace of mind that our guests are always well taken care of.

TRANSPORTATION AGENTS

Upon arrival at the BCEC, you won't miss our enthusiastic Transportation Agents. They are stationed outside the facility wearing bright yellow shirts! Not only can they assist you with parking or locating your shuttle bus, but they can hail you a cab, let you know of any delays, or recommend the best route to your next location. They know the city like the back of their hands and are happy to help you get to where you need to be.



Once inside the BCEC, you will find the BCEC Transportation Information Booth located near the registration area. Stop here to find transportation information, including subway maps, bus routes, and taxi information. Check out the transportation section on page 16 for more information.



Boston Harbor, offering breathtaking views of Boston's Waterfront District.

The remarkable aesthetics of the BCEC are matched by extraordinary functionality, as the BCEC offers every convenience imaginable. It's no surprise that the BCEC has earned "Gold Standard" certification from the International Association of Congress Centres (AIPC), the highest certification a convention center can receive!

About the BCEC

This stunning, innovative building was designed by world-renowned architect Rafael Viñoly and HNTB Architecture. The beauty and symbolism of the building's modern, glass-lined interior is reflected throughout the 2.1 million square feet of space and 82 meeting rooms. The 40,000 square-foot ballroom overlooks

Your Mobile Workplace

Business doesn't stop when you're not in the office. The BCEC is on the cutting-edge of technology, delivering the most advanced services of any convention facility in the world.



YOUR OFFICE NOOK AT THE BCEC

Throughout the BCEC you will find many areas where you can get together with colleagues, prepare for your presentation, catch up on your emails, or simply take a break and recharge — both yourself AND your electronic devices! These public work-spaces have permanent seating with charging outlets. Check out the maps on pages 10-12 for locations on every level.

FREE WI-FI

You can't conduct business without connectivity! Free Wi-Fi is available 24/7 throughout our entire facility from meeting rooms to loading docks. A recently completed \$3M upgrade showcases the latest generation wireless network system. As part of the upgrade, the number of access points was increased from 119 to 513!

At the BCEC, we don't just provide a signal to your mobile device, we provide the appropriate upstream bandwidth so you can work at the speed you need. Simply put, the BCEC has the best free Wi-Fi service in the industry. Hands down.

To access the BCEC free Wi-Fi, simply open your wireless network connection on any device and click on "BCEC Wireless Network".

PHONE

The BCEC cell phone coverage extends throughout the entire facility. No need to step out of your meeting to try to find good reception; you will find a great connection anywhere in the BCEC. In the event that you do not have your phone, feel free to pick up one of our black house phones to make complimentary local and toll-free calls. Just dial "9" to get an outside line.

BUSINESS CENTER

A full-service FedEx Office is located on Level One on the west side of the North Lobby. You can make copies, print directly from your tablet or smart phone, purchase office supplies, ship a package, and even create and print posters and banners on the spot. The hours vary according to event schedules; call 617-954-2203 for personal service.



Take a Break

If you find yourself with a break in your schedule, here are a few ideas for some quick time-outs:

I NEED A CUPPA JOE!

To satisfy your coffee cravings, the BCEC features Outtakes Quick Cuisine, located in the North Lobby. There you can find fresh brewed **New England® Coffee** and espresso as well as quick snacks.

SEAPORT STROLL

Take advantage of the spectacular harbor and city views on this short, 15 minute walk. Exit the BCEC North Lobby, cross Summer Street, and follow World Trade Center Avenue to the Seaport World Trade Center. Look for Harborwalk signs to enjoy a picturesque walking route along the waterfront. You'll find green space, great water views, and lots of people watching along the way. Return to the BCEC by the same route.

SPARK YOUR CREATIVITY

The BCEC is proud to offer a rotating schedule of contemporary art exhibitions featuring gifted Massachusetts artists. View the work of established professionals alongside budding talents and refresh your creativity between meetings. *Learn more at massconvention.com/art.*



Vital Information

ATMS

Level Zero: Southeast Lobby
Level One: Food Court, North Lobby

BCEC EXECUTIVE OFFICES

Level Zero
617-954-2000

EMERGENCY/FIRST AID

617-954-2222 or
Dial x2222 from any house phone

FEDEX OFFICE BUSINESS CENTER

Level One: North Lobby
617-954-2203

LOST & FOUND

617-954-2222

MBTA PASSES

Level Zero: Southeast Lobby
Level One: North Lobby

PUBLIC SAFETY STATIONS

Level Zero: Northeast Lobby
Level One: North Lobby
617-954-2222

TRANSPORTATION DESK

Location varies by event
617-954-2000

VISITOR INFORMATION

Level One: North Lobby
617-954-2566

WIRELESS INTERNET TECHNICAL ASSISTANCE

617-954-2999

SMOKING AREA

While smoking is prohibited within the BCEC, there are designated areas to go to for a cigarette break. For your convenience, there is a designated smoker's patio outside the Level Zero entrance.

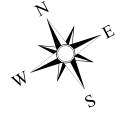
INFANT CARE

For a bit of privacy while nursing or feeding your infant, please ask a Guest Services Ambassador if your event has a designated parent's room. Changing facilities are located in all family restrooms. See map for locations.

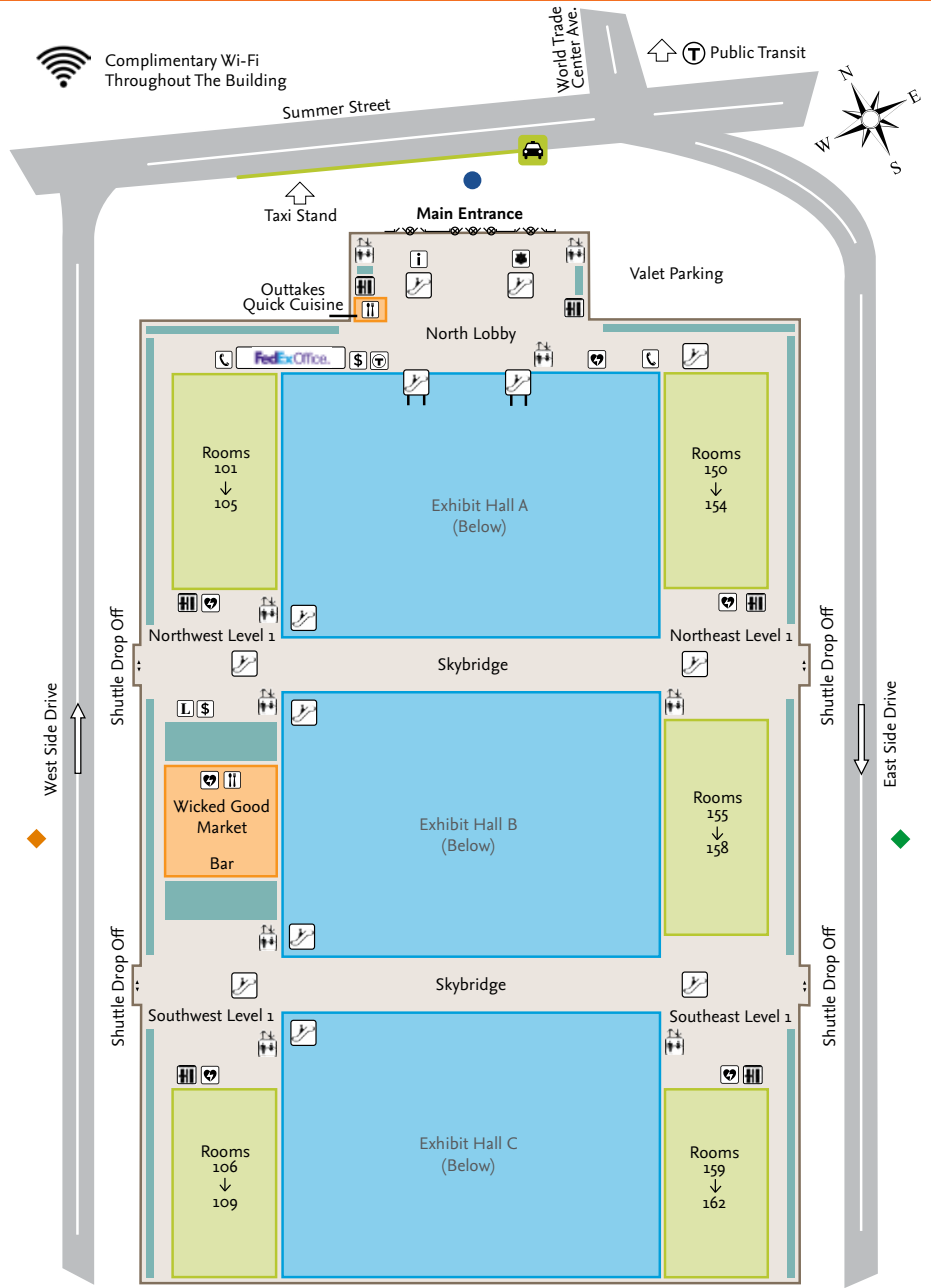
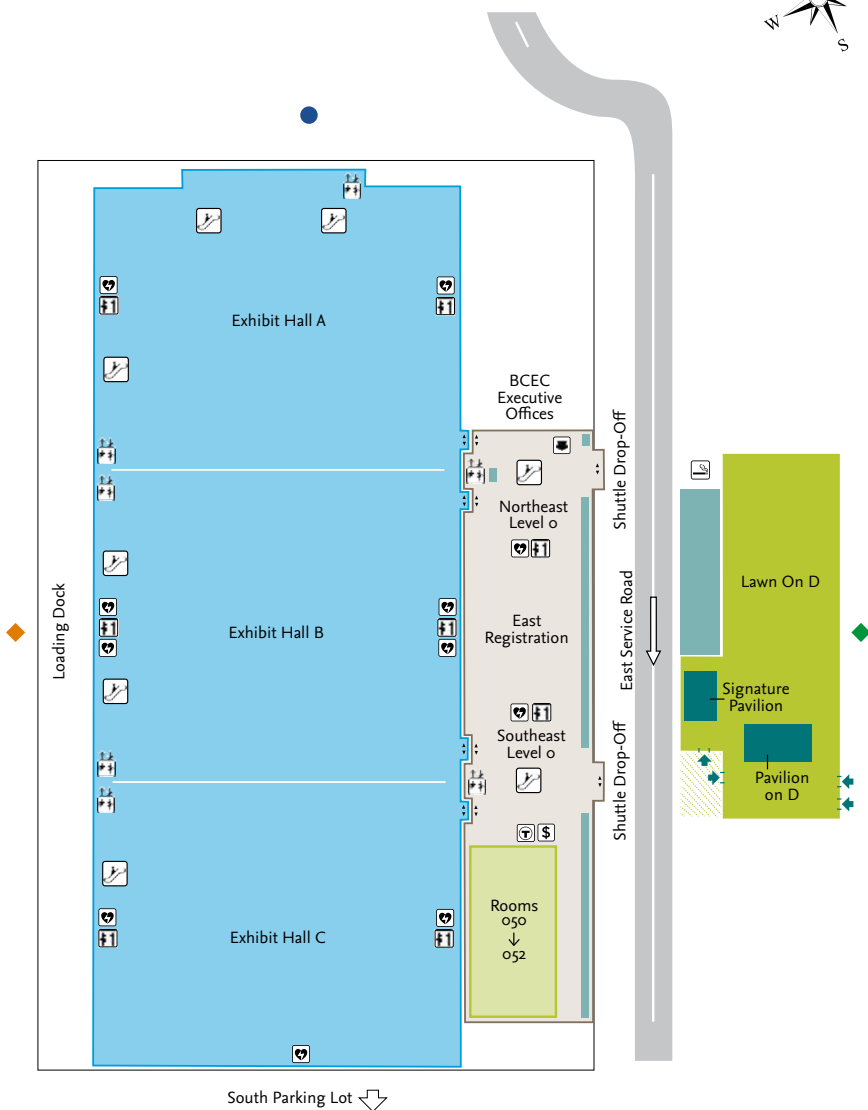
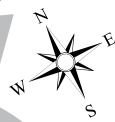
ACCESSIBILITY

The BCEC is entirely accessible, designed according to ADA requirements and beyond. A limited number of wheelchairs are available free-of-charge through Public Safety. Please ask a Guest Services Ambassador if you need mobility assistance. For most events, complimentary golf cart service is provided to bring you to locations inside the building. For personal service contact Public Safety: 617-954-2222.

Complimentary Wi-Fi Throughout The Building

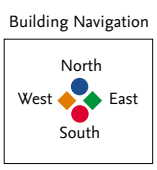


Complimentary Wi-Fi Throughout The Building



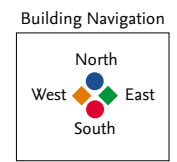
LEVEL ZERO (EXHIBITION HALL)

- Exhibition Hall
- Meeting Room
- Lobby & Public Use
- Seating
- \$ ATM
- + Defibrillators
- ↑↓ Elevators
- ↕ Escalators
- ♿ Family Restrooms
- ♻️ MBTA Vending Machine
- 🚰 Public Safety
- 🚭 Smoking Patio

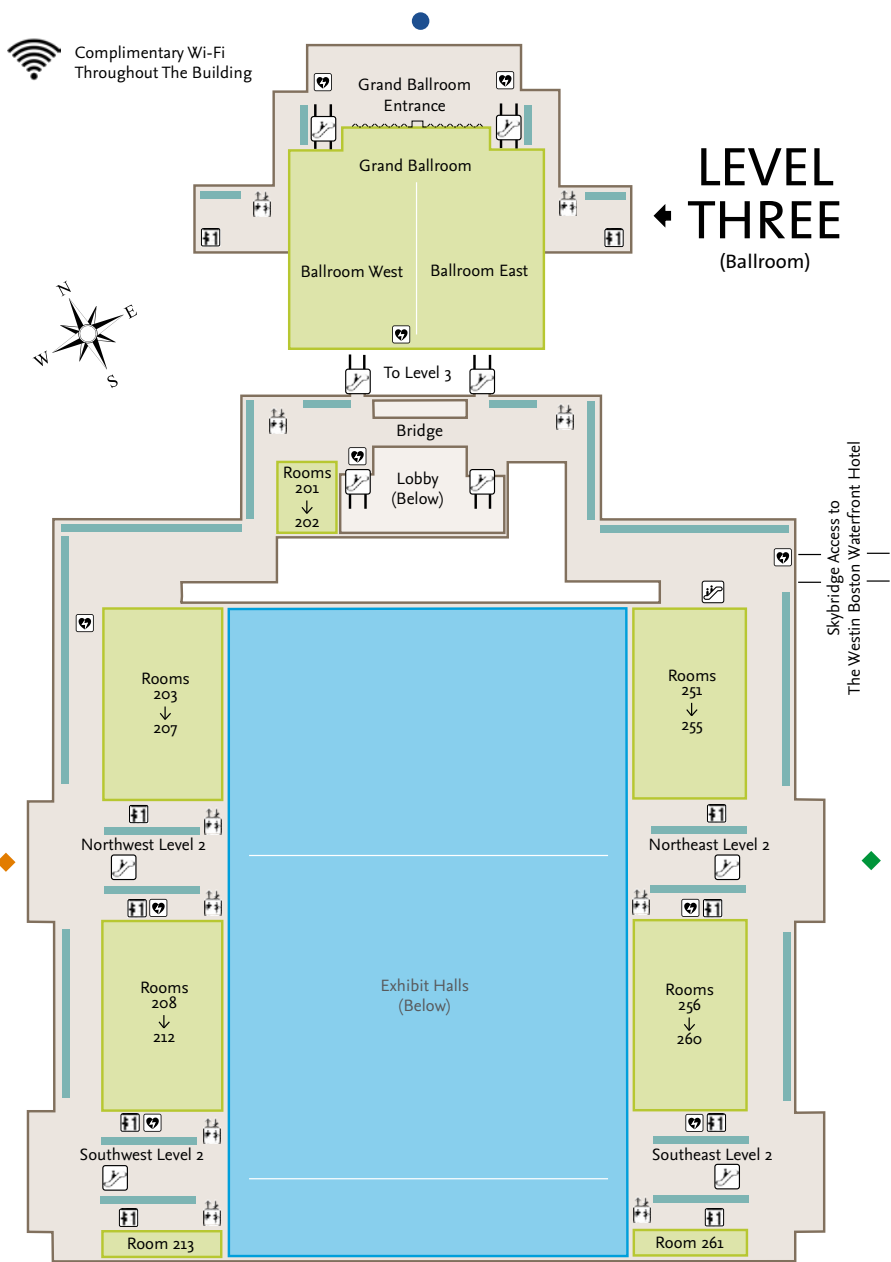


LEVEL ONE (CONCOURSE)

- Exhibition Hall
- Meeting Room
- Lobby & Public Use
- Food Services
- Seating
- \$ ATM
- + Defibrillators
- ↑↓ Elevators
- ↕ Escalators
- ♿ Family Restrooms
- 🚰 MBTA Vending Machine
- 🚰 Food
- 🚰 Public Safety
- 🚰 Information
- 📞 Telephone
- 📞 Lottery Machine



Complimentary Wi-Fi Throughout The Building



LEVEL THREE
(Ballroom)

LEVEL TWO

- Lobby & Public Use
- Meeting Room
- Seating
- Defibrillators
- Elevators
- Escalators
- Family Restrooms

Building Navigation



Signature BOSTON™ Industry Leading Green Practices

In May 2016, the BCEC was certified LEED Silver by the US Green Building Council. LEED, which stands for “Leadership in Energy and Environmental Design,” is an internationally adopted “green building” rating system, which evaluates a building’s environmental footprint in terms of its resource consumption, waste management practices, and overall operational efficiency.

The BCEC and Hynes annually recycle over 1,000 combined tons of material including cardboard, plastic, paper, glass and food waste.



1,000 TONS



In 2015, we sent **526,000 lbs.**

of food waste to local farms to be composted into fertilizer.

Our power consumption is minimized through sensor-controlled, high-efficiency lighting, automatically cutting energy use in non-occupied spaces.



CONVENTIONS **C.A.R.E.**
COMMUNITY ASSISTANCE BY RESPONSIBLE EVENTS

Event planners and exhibitors are encouraged to recycle through our Conventions C.A.R.E program, in which unused, clean, non-perishable items are collected at the end of an event and donated to local community organizations.

You can help too – use our spring water coolers for a quick thirst-quencher or to refill your own reusable bottle.

This publication features earth-friendly soy inks and 10% of the energy used to print this book comes from wind and other renewable sources.





Where to Eat at the BCEC

At the BCEC, delicious food is always right around the corner. Levy Restaurants, the BCEC's award-winning culinary partner, takes great pride in the quality and selection of the food they offer. Whether you are looking for a quick snack or a tasty lunch, you have great choices at the BCEC. Gluten-free, vegan, vegetarian, and nut-free options are also available. Simply ask a Guest Services Ambassador for food locations and hours during your event.



Don't have much time? Outtakes Quick Cuisine offers packaged sandwiches, pastries, fresh brewed **New England® Coffee**, quick snacks, and even sundry items and souvenirs. With convenient locations in the North Lobby and throughout the building, you don't have to miss one minute of your event!

WICKED GOOD Hungry for more? [M A R K E T] The Wicked Good Market offers heartier fare for every appetite. Different stations offer a variety of cuisine, from healthy salads to customizable Asian bowls and build-your-own burritos. You can even enjoy a taste of Boston's North End with brick oven pizza or a heaping bowl of pasta. Visit us on Level One West.



Thirsty for a pint? The Sam Adams Pub, located within the Wicked Good Market, is a great place to grab a drink and catch a game. While at the pub you can dine on traditional Boston fare such as fresh New England lobster rolls, beer battered fish-and-chips, and Sam Adams draft beer.





Getting Here from There

The BCEC is conveniently located just minutes away from Boston's major highways and is easily accessible from Boston's Logan International Airport as well as South Station. Whether it's by car, train, or bus, getting to and from the BCEC couldn't be easier! You have many options and we highlight a few of them here.

Traveling via Public Transit

TAKE "THE T" TO THE BCEC!

While Boston is known for being the birthplace of liberty, it is also the birthplace of mass transportation. The city's transit system is the oldest, and fourth largest, in the Nation. You can journey all over Boston, venture into the suburbs, and get to and from Logan Airport with ease via the MBTA, affectionately known as "the T".



Passes for "the T" are available for purchase at the BCEC. Vending machines can be found on Level Zero and Level One. See building map on pages 10-12 for locations.

Traveling via Logan Airport

The BCEC is conveniently located just minutes from Boston's Logan International Airport. You have many choices for quickly getting to the BCEC after you land, and it's easy to get back to the airport to catch your flight when it's time to return home.

SILVER LINE BUS SERVICE

To the BCEC from Logan

The Silver Line is an express bus service connecting Logan Airport with the BCEC's South Boston neighborhood. From Logan, take the free Silver Line Bus SL1 (MBTA). Exit at the World Trade Center stop, and take the elevator or escalators up to Level 2. Take a left onto World Trade Center Avenue and the BCEC will be directly in front of you.

From the BCEC to Logan

Exit the BCEC and walk across to World Trade Center Avenue. After a short, 3-5 minute walk, you will arrive at the World Trade Center Silver Line stop. Take the elevator or stairs to the lower level. Buses leave the World Trade Center stop every 10-12 minutes daily. Check the "SL1" timetable at mbta.com.



BACK BAY LOGAN EXPRESS**To your Back Bay Hotel from Logan**

The Back Bay Logan Express shuttle stops to pick up passengers at all terminals at Logan Airport. There are two drop-off locations: Copley Square @ St. James Avenue and the Hynes Convention Center. Both locations are within walking distance to hotels in the Back Bay. Travel time from Logan to the Hynes is approximately 20 minutes (but be sure to leave some extra time during rush hour!).

To Logan from your Back Bay Hotel

The Back Bay Logan Express runs every 20 minutes and departs the Hynes Convention Center, 900 Boylston Street, from the drop-off lane located at the Hynes' entrance. You can also catch the shuttle at the Copley T Station, 650 Boylston Street.

The Back Bay Logan Express shuttle tickets may be purchased on board via credit or debit card for \$7.50. Visit massport.com for more information.

TAXI CABS**To the BCEC from Logan**

Taxi cab stands are stationed outside of every terminal at Logan Airport.

To Logan from the BCEC

Taxi cabs can be hailed from the BCEC North Entrance.

Passengers are responsible for all tolls and airport fees.

**WATER TAXI AND WATER SHUTTLE**

A fun and convenient way to get to the BCEC from Logan Airport is by water! Enjoy fantastic views of Boston Harbor and the city from a climate-controlled waiting area. Available year-round!

To the BCEC from Logan

The Massport Route 66 Shuttle Bus provides free shuttle service to the Logan Dock from all airport terminals. Take the water taxi or water shuttle to the World Trade Center stop. Once you arrive, take a left onto World Trade Center Ave, and the BCEC will be directly in front of you.

From the BCEC to Logan

Exit the BCEC and walk across to World Trade Center Avenue. After a short, 3-5 minute walk, you will arrive at the World Trade Center where you can get a water taxi or water shuttle. Once you arrive at Logan, the Massport Route 66 Shuttle Bus provides free shuttle service from the Logan Dock to all airport terminals.

Traveling via South Station

The South Station Train Terminal is at the core of the intermodal transportation hub located in Downtown Boston. Amtrak and several MBTA Commuter Rail lines serve the BCEC to and from South Station. If you are traveling to Boston by train or bus, you will most likely arrive at South Station!

To the BCEC from South Station

Exit at the South Station stop and proceed outside to Summer Street. It's an easy 15-minute walk to the BCEC from South Station. Simply head east on Summer Street and cross the Fort Point Channel. The BCEC is about 1 mile on your right.

Prefer a ride? Catch the MBTA #7 bus and go directly to the BCEC's front door or take the Silver Line SL1 or SL2 to the World Trade Center stop. Just take the elevator to level 2 and turn left onto World Trade Center Avenue. The BCEC will be directly in front of you.

To South Station from the BCEC

Exit the BCEC and take a left onto Summer Street. Cross the Fort Point Channel and continue on Summer Street for approximately 15 minutes. South Station will be about 1 mile on your right. Another option is to take the Silver Line or MBTA #7 bus as noted above.

Park-and-Ride

Coming from the suburbs? Many of the park-and-ride lots throughout Massachusetts offer commuter bus service into downtown Boston. Check out massdot.state.ma.us for more information.



Driving Yourself?

ON-SITE VALET

Valet parking is available by turning into the BCEC's east side entrance off Summer Street. Valets are immediately on your right for most events. Valet parking is \$30 all day.

SELF-PARKING AT THE BCEC

Self-parking is available in the South Parking Lot located behind the BCEC. From Summer Street, turn into the east side entrance between The Westin Boston Waterfront Hotel and the BCEC. At the end of the building, turn right and go down the ramp. At the bottom, turn left and you will see the entrance to the South Parking Lot. Shuttle buses run continuously between the lot and the building for events that do not take place in Hall C, otherwise the lot is just a short walk from the building's Southeast entrance. Self-parking is \$17 all day; overnight parking is not available.

Check out SignatureBoston.com for helpful maps and directions.

America's Walking City

Explore Boston on foot! Walking is an easy, pleasant and stress-free way to enjoy your visit. Known for historic and picturesque neighborhoods, Boston has outstanding pedestrian features including:

- A compact and relatively flat layout with European style streets that are safe, lively and diverse.
- Centrally located points of interest: history, entertainment, nightlife, architecture, culture, science and arts abound.
- A great feeling of openness against a backdrop of skyscrapers, thanks to Boston's beautiful waterfront areas, inviting green spaces like the Boston Common, Rose Kennedy Greenway, Commonwealth Avenue Mall and the Charles River Esplanade.

Everything is within walking distance. And everyone in Boston walks. So put on your walking shoes and explore Boston, America's Walking City.



NEED TO POWER UP?

Electric vehicle charging is available on-site. Simply follow the directions for "Self-Parking at the BCEC." Once there you will pay the regular self-parking rate, and be directed to the charging stations in the North Lot. Guests must have a Chargepoint account to activate the charging station.

Wheels around Town

Once you are at the BCEC, there are many ways to explore Boston and get around the city. Here are a few!

TAXI CABS

Taxi cabs can be hailed from the BCEC's North Entrance. See one of our friendly transportation agents for help.

PEDICABS

If you want a cool way to get around Boston proper, hail a pedicab! Most pedicabs operate between 11 am and 11 pm and can fit 2-3 passengers. Riding is limited during the fall and winter months and during inclement weather in the spring and summer months.

PEDAL POWER

Should you want to pedal your way around Boston, check out our Hubway bicycle station right outside our front door. This convenient and innovative bike share program is located on Summer St outside of the North Lobby and on D St between the Westin and The Lawn On D.

**Not available in winter months.*

CAR SHARING

Need your own wheels for a few hours? Zip Car is available in the North Lot at the BCEC.





Boston Dining

Food, glorious food! Boston has a well-deserved rep as a historic city – but that doesn't mean we don't embrace innovation, especially as it relates to food. While our celebrity chefs are world-famous, a new crop of hot restaurateurs is setting Boston's dining scene on fire with their distinctive and creative flair. From stellar seafood served along waterfront rooftops, to grilled masterpieces at downtown steakhouses, to a burger from the corner pub, you will experience great food.



75 on Liberty Wharf

G3 | \$\$ | 617-227-0754

220 Northern Avenue | 75onlibertywharf.com

75 on Liberty Wharf is comfortable and beautiful, offering a welcoming ambiance to everyone who walks through the door. An American-inspired bistro, boasts a selection of innovative New England-style fare.



Fargo's Deli Of Course

F5 | \$ | 617-261-1664

451 D Street, Seaport Center Lobby | deliofcourse.com

Deli of Course has been the Seaport's go-to-deli for breakfast, lunch, and catering for over 15 years. Family owned and operated, we offer high quality sandwiches, subs, salads and daily hot specials.



Jimmy John's

E5 | \$ | 857-317-3947

413 D Street | jimmyjohns.com

Freaky fast! Freaky good! Jimmy John's is your go-to spot for fresh, fast, tasty subs. The bread is served freshly baked, and the meats and veggies are sliced in-house daily.

see our ad on inside front cover



Morton's The Steakhouse

F3 | \$\$\$\$ | 617-526-0410

Two Seaport Lane | mortons.com

Situated just steps from Boston's World Trade Center, Morton's The Steakhouse Seaport offers an extensive wine collection, prime-aged beef, succulent seafood, signature sides and elegant desserts-available during lunch and dinner service.

FINE DINING

Del Frisco's
G3 | \$\$\$\$ | 617-951-1368
 250 Northern Avenue
 delfriscos.com

Menton
D2 | \$\$\$\$ | 617-737-0099
 354 Congress Street
 mentonboston.com

Ocean Prime
E2 | \$\$\$ | 617-670-1345
 140 Seaport Boulevard
 ocean-prime.com

Smith & Wollensky
C2 | \$\$\$\$ | 617-778-2200
 294 Congress Street
 smithandwollensky.com

SEAFOOD

Barking Crab
D1 | \$\$ | 617-426-2722
 88 Sleeper Street
 barkingcrab.com

Legal Harborside
G3 | \$\$\$ | 617-477-2900
 270 Northern Avenue
 legaleseafoods.com/
 restaurants/boston-legal-
 harborside


LTK Bar and Kitchen
F3 | \$\$ | 617-330-7430
 225 Northern Avenue
 ltkbarandkitchen.com

No Name Restaurant
G3 | \$\$ | 617-423-2705
 15 Fish Pier West
 nonamerestaurant.com

Row 34
D3 | \$\$\$ | 617-553-5900
 383 Congress Street
 row34.com

Union Oyster House
 \$\$\$ | 617-227-2750
 41 Union Street
 unionoysterhouse.com

**Yankee Lobster Fish
 Market & Restaurant**
H4 | \$\$ | 617-345-9799
 300 Northern Avenue
 yankeelobstercompany.com

RESTAURANT LOCATION	MEAL PRICE GUIDE (USD)
B2 	\$ <\$10
	\$\$ \$11 - \$30
	\$\$\$ \$31 - \$60
	\$\$\$\$ >\$61

See map pages 26-27

Please check with restaurants directly for information and reservations.

CASUAL DINING

Amrheins
B6 | \$\$ | 617-268-6189
 80 West Broadway
 amrheinsboston.com

Atlantic Beer Garden
E2 | \$\$ | 617-357-8000
 146 Northern Avenue
 atlanticbeergarden.com

Aura/Tamo
F3 | \$\$\$ | 617-385-4300
 Seaport Hotel
 One Seaport Lane
 seaportboston.com

Babbo Pizzeria e Enoteca
E1 | \$\$ | 617-421-4466
 11 Fan Pier Boulevard
 babbopizzeria.com

Barlow's Restaurant
C5 | \$\$ | 617-338-4142
 241 A Street
 barlowsrestaurant.com

Bastille Kitchen
C3 | \$\$\$ | 617-556-8000
 49 Melcher Street
 bastillekitchen.net

Birch Bar/City Bar
E4 | \$\$\$ | 617-532-4600
 Westin Hotel
 425 Summer Street
 westinboston
 waterfront.com

Blue Dragon
C3 | \$\$ | 617-338-8585
 324 A Street
 ming.com/blue-dragon



Boston Beer Garden
G9 | \$\$ | 617-269-0990
 732 East Broadway
 bostonbeergarden.com

Café Porto Bello
F9 | \$\$ | 617-269-7680
 672 East Broadway
 cafeportobello.net

Cheers
 \$\$ | 617-227-9605
 84 Beacon Street
 617-227-0150
 Faneuil Hall Marketplace
 cheersboston.com

Committee
E1 | \$\$ | 617-737-5051
 50 Northern Avenue
 committeeboston.com

Coppersmith
B6 | \$\$ | 617-658-3452
 40 West 3rd Street
 coppersmithboston.com

Drink
D2 | \$\$\$ | 617-695-1806
 348 Congress Street
 drinkfortpoint.com

Empire
E1 | \$\$\$ | 617-295-0001
 One Marina Park Drive
 empireboston.com

Gather
E2 | \$\$ | 617-982-7220
 75 Northern Avenue
 gatherboston.com

**Jerry Remy's
 Sports Bar & Grille**
G3 | \$\$ | 617-856-7369
 250 Northern Avenue
 remyseaport.com

Lincoln
C8 | \$\$ | 617-765-8636
 425 West Broadway
 lincolnsouthboston.com



**Loco Taqueria & Oyster Bar**

D8 | \$\$\$ | 617-917-5626
412 West Broadway
locosouthboston.com

Lucky's Lounge

D3 | \$\$\$ | 617-357-5825
355 Congress Street
luckyslounge.com

M.J. O'Connor's

E4 | \$\$\$ | 617-443-0800
Westin Hotel
425 Summer Street
mjoconnors.com

Moko

G9 | \$\$\$ | 617-752-4601
674 East Broadway
mokoboston.com

Moonshine 152

G3 | \$\$\$ | 617-752-4191
152 Dorchester Avenue
moonshine152.com

Nebo Cucina & Enoteca

C1 | \$\$\$ | 617-723-6326
520 Atlantic Avenue
neborestaurant.com

Outlook Kitchen and Bar

D2 | \$\$ | 617-338-1559
70 Sleeper Street
outlookkitchenandbar.com

Papagayo

C3 | \$\$\$ | 617-423-1000
283 Summer Street
papagayorestaurants.com

Pastoral

D3 | \$\$ | 617-345-0005
345 Congress Street
pastoralfortpoint.com

The Playwright

F9 | \$\$ | 617-269-2537
658 East Broadway
theplaywrightbar.com

Rosa Mexicano

E3 | \$\$ | 617-476-6122
155 Seaport Boulevard
rosamexicano.com

Sapóre Ristorante + Bar

F3 | \$\$ | 617-476-5606
Renaissance Hotel
606 Congress Street
saporeristoranteboston.com

Salvatore's

G3 | \$\$\$ | 617-737-5454
225 Northern Avenue
salvatoresrestaurants.com

Sauciety

E5 | \$\$\$ | 617-532-4670
Westin Hotel
425 Summer Street
westinbostonwaterfront.com/sauciety

Shenannigans

C7 | \$\$ | 617-269-9509
332 West Broadway
shenannigansbarandgrill.com

Sportello

D2 | \$\$\$ | 617-737-1234
348 Congress Street
sportelloboston.com

Stats Bar & Grille

E8 | \$\$ | 617-268-9300
77 Dorchester Street
statsboston.com

Stephi's in Southie

A6 | \$\$ | 617-345-5495
130 Dorchester Avenue
stephisinsouthie.com

Strega Waterfront

E2 | \$\$\$ | 617-345-3992
One Marina Park Drive
stregawaterfront.com

Tavern Road

C2 | \$\$\$ | 617-790-0808
343 Congress Street
tavernroad.com

Tavitas

B2 | \$\$ | 857-302-7001
650 Atlantic Avenue
tavitas.com

Teatro

\$\$ | 617-778-6841
177 Tremont Street
teatroboston.com

Temazcal

G3 | \$\$\$ | 617-439-3502
250 Northern Avenue
temazcalcantina.com

Teriyaki House

B6 | \$ | 617-269-2000
32 West Broadway
teriyakihouse.com

Trade

C1 | \$\$\$ | 617-451-1234
540 Atlantic Avenue
trade-boston.com

The Whiskey Priest

E2 | \$\$ | 617-426-8111
150 Northern Avenue
whiskey-priest.com

Worden Hall

A6 | \$\$ | 617-752-4206
22 West Broadway
wordenhall.com

GRAB & GO**Barrington Coffee**

D2 | \$\$ | 857-277-1914
346 Congress Street
barringtoncoffee.com

Bee's Knees Supply

D2 | \$ | 617-292-2337
12 Farnsworth Street
beeskneessupply.com

Bon Me

C2 | \$ | 857-350-4035
313 Congress Street
bonmetruck.com

Cosi

F3 | \$ | 617-720-2674
Two Seaport Lane
getcosi.com

Dunkin' Donuts

E5 | \$ | 617-439-6020
411 D Street
dunkindonuts.com

Flour Bakery + Café

D2 | \$\$ | 617-338-4333
12 Farnsworth Street
flourbakery.com

Freshii

C5 | \$\$ | 857-496-0656
One Iron Street
freshii.com

J. Pace & Son

G4 | \$ | 857-366-4640
One Park Lane
jpaceandson.com

Larry J's BBQ Cafe

F3 | \$\$ | 617-348-9800
600 D Street
larrysbbqcafe.com

Metro Cafe

C2 | \$ | 617-399-2000
332 Congress Street
gometro.com

Sebastians Café

F3 | \$ | 617-624-7990
157 Seaport Boulevard
sebastians.com

Starbucks

E4 | \$\$ | 617-532-4600
Westin Hotel
425 Summer Street
starbucks.com

Sweetgreen

D3 | \$\$ | 857-263-7916
372 Congress Street
sweetgreen.com

Water Café at the ICA

E2 | \$\$ | 617-478-3291
100 Northern Avenue
icaboston.org/visit/





	Food/Drink
	Activities & Attractions
	Hotels
	Parking
	MBTA Station
	Commuter Rail Station
	Fort Point Channel
	South Boston Waterfront
	South Boston

↑
 TO FANEUIL HALL, CHEERS,
 UNION OYSTER HOUSE,
 BOSTON DUCK TOURS

↳
 TO DOWNTOWN
 FINANCIAL DISTRICT,
 ISABELLA STEWART
 GARDNER MUSEUM,
 TEATRO

SOUTH STATION

BROADWAY STATION

THE ENVOY HOTEL
 INTERCONTINENTAL HOTEL
 BOSTON TEA PARTY MUSEUM
 BOSTON'S CHILDREN MUSEUM
COURTHOUSE

BOSTON CONVENTION & EXHIBITION CENTER

NORTHERN AVE
 INSTITUTE OF CONTEMPORARY ART
 SEAPORT WORLD TRADE CENTER

WORLD TRADE CENTER

SILVER LINE WAY

BCEC SOUTH PARKING LOT

ALOFT HOTEL
 ELEMENT HOTEL

BOSTON MARINE INDUSTRIAL PARK

FORT INDEPENDENCE
 CASTLE ISLAND

TO CARSON BEACH

EAST BROADWAY



Activities & Attractions

A trip to Boston wouldn't be complete without experiencing what makes this city a destination for over 18 million visitors annually. There is truly something for everyone. Boston is steeped in rich history and culture, and our area attractions celebrate our storied past while embracing the future. Spend the day or extend your stay. There is so much to explore and so many ways to enjoy our beloved Beantown!



Boston Duck Tours

617-267-3825 | BostonDuckTours.com

Experience Boston's most popular tour, departing from Prudential Center, Museum of Science and New England Aquarium. Tours available at the Prudential Center in 10 different languages. Open daily March 21 – November 27 & weekends in December.

see our ad on page 41



Isabella Stewart Gardner Museum

25 Evans Way

617-566-1401 | gardnermuseum.org

The Isabella Stewart Gardner Museum — a work of art in totality — is at once an intimate collection of fine and decorative art and a vibrant, innovative venue for contemporary artists, musicians and scholars.

see our ad on the inside back cover



Laugh Boston

425 Summer Street | Westin Boston Waterfront Hotel

E4 | 617-72.LAUGH | laughboston.com

Laugh Boston's 300-seat state-of-the-art comedy theater features premier stand-up comedy, as well as national acts. Located in the The Westin Boston Waterfront Hotel directly across from the BCEC, Laugh Boston serves light fare and a full bar.

see our ad on the back cover



Boston Tea Party Ships & Museum

Congress Street Bridge

C2 | 617-338-1773 | bostonteapartyship.com

Discover “the single most important event leading up to the American Revolution” with live actors, interactive exhibits, authentically restored tea ships and the stirring, multi-sensory documentary “Let it Begin Here.”



Why you should go there: The neighborhood of South Boston is a stone's throw from the BCEC. South Boston has three miles of public beaches, offering swimming, great views, a bathhouse and bocce courts. The restaurant scene has exploded in recent years and you can find everything from Irish pubs to upscale restaurants that even the pickiest foodie would love! If you're a history buff, the oldest fortified military site in British North America, Fort Independence Castle Island, offers splendid views and outdoor activities for all ages.

Boston Neighborhoods

The BCEC is surrounded by several distinct neighborhoods, each having its own vibe and appeal. What makes Boston unique is that its diversity and culture can change from one block to the next. We invite you to explore our wonderful neighborhoods and make the most of your free time right here in the BCEC's backyard.

South Boston

The Vibe: South Boston, or "Southie" as it is affectionately known, has it all. The locals love displaying their "Southie Pride" and this sense of community is evident the moment one drives along Carson Beach and down L-Street. You will find young couples jogging with baby strollers alongside elderly couples walking hand-in-hand. The close proximity to Boston proper has made South Boston a mecca for millennials who want an urban setting and amenities such as the beach and great dining.



South Boston Waterfront

The Vibe: The South Boston Waterfront is buzzing with activity! From trendy restaurants to chic shops and eclectic museums, you feel the energy the moment you arrive. It's no wonder the area is home to a unique combination of startups and major companies, creating a dynamic urban environment that fosters innovation, collaboration, and growth. There is never a dull moment at the South Boston Waterfront!

Why you should go there: The South Boston Waterfront offers many places to eat. Enjoy a savory lunchtime lobster roll or sip a cocktail on one of the many outdoor roof decks that overlook the water. A growing list of diverse retail shops, museums, and hotels



add to the area's vibrancy and vitality. And in the warmer months, you just may overhear a concert being performed by one of today's leading artists at the nearby pavilion. Dining. Shopping. Music. The South Boston Waterfront has it all!

Fort Point Channel

The Vibe: Boston's Fort Point Channel District is New England's original artist's enclave. Over 300 artists call Fort Point Channel "home". Former warehouses, converted to artist's lofts and galleries, line its streets and the retail shops range from a unique blend of hand-crafted items (many made by artist residents) to a high-end fashion designer. The food offerings are as eclectic as its wares. You can enjoy a snack from a refreshment stand housed in a 40-foot milk bottle or savor some of the freshest seafood in New England!



Why you should go there: Fort Point's scenic waterway offers breathtaking views of the city and stretches from the harbor to South Station. It is home to four museums, a waterfront park, countless galleries, and an abundance of restaurants. Fort Point is also part of the 38-mile Boston Harborwalk, a public trail that weaves through wharfs and piers from Charlestown to Dorchester.





Chinatown

The Vibe: An iconic and welcoming three-story pagoda marks the entrance to Boston's Chinatown. Rich with tradition, culture, and of course, great food, Chinatown may be small but it is the third largest in the country, behind only New York and San Francisco. The streets are maze-like, filled with everything from Chinese to Malaysian restaurants, old school bakeries to more contemporary ones, food markets, beauty salons, and retail stores. There is a vibrancy to Chinatown that is unparalleled!



the 70+ stores in the area. When it's time to relax, the Rose Kennedy Greenway, Boston's only organically maintained public park, is a great spot to wind down and people watch. You can even cool off in one of the seven water features on a hot day. It's no wonder why this part of Boston is one of the most visited tourist attractions in the world!



North End

The Vibe: Boston's "Little Italy" is a one-square mile urban neighborhood steeped in culture and tradition. It is Boston's oldest neighborhood and is home to too many Italian restaurants to count! Its narrow and winding streets are lined with shops and restaurants, with many of them spilling onto the sidewalks in the summertime. While the food and the summer "feasts" are the main attractions for visitors and residents alike, the North End is also bursting with history, making this geographically compact neighborhood a must-see!

Back Bay & Copley Sq.

The Vibe: Victorian brownstones, beautiful gardens, boating, shopping, and dining: Boston's Back Bay neighborhood has it all! Stroll through the Public Gardens and enjoy the breathtaking flowers in bloom while you delight in watching the children ride the Swan Boats. A walk down Newbury Street is a fashionista's dream, with trendy boutiques and high-end designers mixed in with consignment shops and indie stores. Copley Square is an architectural gem, as it is home to two of Boston's tallest buildings, as well as the historic Trinity Church, and the Boston Public Library. The popular Copley Place and Prudential Center shopping malls offer even more retail therapy and dining options. If time permits, take a short stroll to the Charles River, where you can sit back and take in the scenery of sailboats and jiggers.



South End

The Vibe: Tree-lined streets, red brick bow front townhomes, residential parks, art galleries, and restaurants. You will find all of this and more in this revitalized and energized Boston neighborhood. Tremont Street in the South End is often referred to as "Restaurant Row", boasting a diverse mix of cuisines that includes Brazilian, Ethiopian, and African, among others. This hip and diverse neighborhood is also a hotbed for culture and artists, most notably on Sundays at its open market that brings together local artists, designers, and crafters in an outdoor setting.



Faneuil Hall

The Vibe: The area around Faneuil Hall, which includes the Rose Kennedy Greenway and Government Center, is bustling with activity. Grab lunch from one of the many food trucks that line the Greenway and head to Faneuil Hall Marketplace to watch the world-renowned street performers and musicians captivate the crowd. Pick up a souvenir at a pushcart or get your retail fix at any of

Connect with us!



@SignatureBoston



@SignatureBos



/SignatureBoston

Signature
BOSTON

SignatureBoston.com



EXPERIENCE BOSTON'S
Most Popular Tour!

Tours depart 7 days a week from the
Museum of Science, Prudential Center
and New England Aquarium.

\$3.00 OFF*

per person when you show this coupon
at any Boston Duck Tour ticket booth!

BDT Code: C-Navigator

*Not to be combined with any other offers, discounts or promotions. Offer Expires 12/18/16

For tickets visit www.BostonDuckTours.com,
call 617-450-0068 or visit your hotel concierge!

Available in 10 languages from Prudential Center



Welcome To America's Oldest Restaurant
UNION OYSTER HOUSE

A National Historic Landmark



*On The Freedom Trail
 One Block From
 Historic Faneuil Hall*

*Specializing In Hearty Portions
 Of Yankee Style Seafood,
 Fresh New England Lobster
 And Grilled Meats*

41 Union Street • 617-227-2750

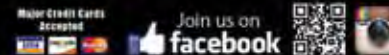
*Sunday-Thursday 11 am -9:30 pm • Friday & Saturday 11 am -10 pm • Union Bar til -Midnight
 Functions • Validated Parking • All Major Credit Cards Honored • Reservations Recommended
 Visit Our Website • www.unionoysterhouse.com*

300 Northern Ave. Boston MA

617-345-9799



www.yankeelobstercompany.com



Receive a free small
 Clam Chowder
 with this ad!

ART MAKES A CITY

At the Massachusetts Convention Center Authority, we make support of local arts a key priority. Make sure to visit the rotating collection of local art on display inside the convention center.

**MASSACHUSETTS
 CONVENTION CENTER
 AUTHORITY**

www.massconvention.com

*Sometimes you want to go
 where everybody knows your name...*



PUB • RESTAURANT • GIFT SHOP
www.cheersboston.com

"The Original"
 84 Beacon Street • Beacon Hill
 617-227-9605

"The Replica"
 Faneuil Hall Marketplace
 617-227-0150

TM 2016 CBS Studios, Inc. All Rights Reserved



Cold Smoked
King Salmon Tartare

Boston's Finest Dining
THE RESTAURANTS OF COLUMBUS HOSPITALITY GROUP



Complimentary car service available, inquire for details.

MISTRAL

South End
617.867.9300
MistralBistro.com

TEATRO

Theatre District
617.778.6841
TeatroBoston.com

Sorellina

Copley Square
617.412.4600
SorellinaBoston.com

MOOO....

Beacon Hill
617.670.2515
MooRestaurant.com

OSTRA

Back Bay
617.421.1200
OstraBoston.com

ColumbusHospitalityGroup.com

UNEXPECTED SPLENDOR.

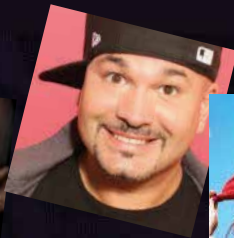


**ISABELLA
SEWART GARDNER
MUSEUM**

25 EVANS WAY BOSTON

Open daily from 11 am to 5 pm
Thursday until 9 pm
Closed Tuesday

Psst... Come get your **laugh on!**
Laugh Boston is **NEXT DOOR.**
No, seriously. Right next to you.
(We're in the Westin!)



Come check out **Boston's Best
Comedy Club** - featuring national
headliners, hilarious local acts
+ delicious cocktails. All in a
sleek new venue!



JUST STEPS AWAY FROM THE BCEC

laughboston.com | 617.72.LAUGH

425 Summer Street at the Westin Hotel in Boston's Seaport District