



OASIS BOOTH PACKAGE DÉCOR RULES

1. **DESCRIPTION:** An OASIS Booth Package is defined as an open floor environment in a gallery-like setting, no dividers or walls. Product must be displayed on booth package fixtures/furniture provided by Show Management:

- Choice of 3 Accessories:

- Gunmetal Garment Rack (5'H x 6'L)
- Desert Sand Distinct Shelving Unit (72"H x 54"W x 14"D)

- (1) Desert Sand Distinct Table (30"H x 42"W x 30"D)

- (2) Clear Wendy Chairs (35.8"H x 15"W x 19.7"D)

- (1) LED Parcan Light

- (1) 12" x 12" Custom ID Sign with Stand

- (1) Wastebasket (15"H x 14"W x 9"D)

- Booth Carpet

- 300 lbs. of material handling per booth (regardless of booth size) for direct to hall shipments

* Rendering is for illustrative purposes only. Items may change without notice.



All fixtures, furniture, signage, display and decorative elements must remain within the booth line and may not extend into the aisles.

2. **NO CUSTOM BOOTHS:** OASIS Booth Package exhibitors may not build out or bring in a custom booth, custom walls, custom flooring or custom accessories.
3. **FIXTURE ORDER DEADLINE:** OASIS Booth Package exhibitors will receive a link via email from GES to order furniture and accessories online. Place your order by is **December 21, 2018** to receive the pre-deadline discount.

Fixtures are either rolling racks or shelves.

If you neglect to submit your order by **December 31, 2018**, the fixture choice will revert to default set-up and any changes must be made on site at exhibitor's expense.

Default Set-up:

- Apparel companies: All Racks
- Accessory/shoes/jewelry companies: All Shelves

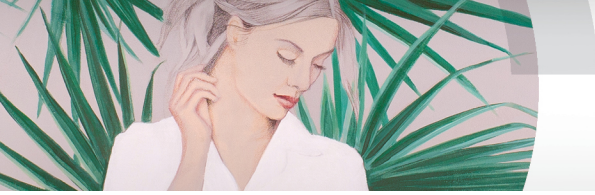
To order your Furniture and Accessories, visit [GES Expresso](#)

All booth packages are default; exhibitors must log in and place orders to opt out.

If necessary, unwanted default fixtures can be left out in the aisle during move-in for removal.

If an on-site swap is needed, changes and labor are billable to the exhibitor.

4. **HEIGHT LIMIT:** Nothing may extend above 8' from the floor including product, décor, display items, accessories, furniture, truss, lighting, A/V equipment or signage. Hanging anything above the booth is prohibited.
5. **ATTACHED ITEMS:** Exhibitors may not affix, apply, hang or attach any item (including, but not limited to, binder clips, S-hooks, lighting, flyers, banners, signage, stickers, decals, tape, adhesives, nails, hooks, screws, tacks or Velcro) on/to any booth package element provided by Show Management including the fixtures/furniture, floor, columns, or other parts of the Exhibit Facility. Any damage due to unapproved materials, clips, sticker, etc. will be charged to the exhibitor for full replacement costs. Please see the next rule for information on permissible signage.
6. **GRAPHICS & SIGNAGE:** **No additional signage is needed or allowed in OASIS.**
7. **LIGHTING/NEON:** **No additional lighting or neon is needed or allowed in OASIS.**



OASIS BOOTH PACKAGE DÉCOR RULES

8. **CARPET & AREA RUGS:** OASIS booth package includes carpet and you will not have the option to opt out.
9. **GRAPHICS & SIGNAGE:** Show Management provides music for the show. Music, sound amplifying devices and Audio/Visual equipment, other than those provided by Show Management, are prohibited.
10. **MODELS:** are **not** permitted.
11. **MANNEQUINS:** are **not** permitted.
12. **CURTAINS & DRAPE:** are not permitted.
13. **FLORAL & SMALL PROPS:** are permitted.
14. **ADDITIONAL BRAND(S) IN BOOTH:** No Exhibitor shall assign, sublet or share any part of its assigned space without the written consent of Show Management. If unapproved brands are found in Exhibitor's booth, exhibitor's booth will be closed down. All monies paid by exhibitor will be forfeited.