

Covered Booth Definition – To place something over or upon an exhibit or portion of an exhibit (e.g., roof, ceiling, tenting, lattice, fabric, plastic) to cover the ground level and/or support decorative structures. The upper portion of a “covered” exhibit is not occupiable.

Multi-Level Booth Definition – To construct a level or tier atop an exhibitor or portion of an exhibit, to be occupied by one (1) or more persons.

A. Guidelines for Covered Exhibits With Less Than Three Hundred (300) Covered Square Feet

- 1) All materials used in the construction of covered exhibits and all decorative materials within the exhibit must be non-combustible or limited combustible (flame-retardant) materials. Certification of flame retardant treatment, along with samples of said materials, must be submitted, if requested by Orange County Fire Rescue Services Department. It is recommended certifications of flame retardant treatments be available at show site.
Exhibitor must install a single station and battery operated smoke detector on the interior of each covered exhibit or structure regardless the square footage. The detector must sound an audible alarm and be installed per the manufacturer’s instructions.
- 2) Exhibitor must provide at least one (1) 2-A, 10-BC portable, dry chemical fire extinguisher. Fire extinguisher(s) must be mounted in a visible location and be accessible at all times.

B. Guidelines for Multi-level Exhibits (regardless the size) and Covered Exhibits With Larger Than Three Hundred (300) Covered Square Feet

Requests for construction of multi-level (regardless the size) or covered exhibits (larger than 300 square feet) must be reviewed by the OCCC Event Management department and Orange County Fire Rescue Services Department. To ensure success of your exhibit, please read and comply with the following guidelines:

- 1) Plans should be submitted before exhibit construction begins and must adhere to the following:
 - a. They must be scaled, signed and dated by a registered architect or engineer.
 - b. They must include the show name and dates.
 - c. They must include exhibitor’s name and assigned booth number.
 - d. They must include directional information (i.e. indicate neighboring aisles and/or booth numbers).
 - e. They must indicate maximum exhibit height, within the booth. Height guidelines are established, per event, by show management. Refer to the Exhibitor’s Manual for applicable guidelines.

- 2) Send two (2) copies of scaled, signed and dated blue prints (with front and side elevations), by a registered architect or engineer, to:

Orange County Convention Center

Attn: Event Management

Regular Mail: PO Box 691509, Orlando, FL 32869

Overnight: 9860 Universal Boulevard, Orlando, FL 32819

- 3) All materials used in the construction of multi-level and/or covered exhibits and all decorative materials within the exhibit must be non-combustible or limited combustible (flame-retardant) materials. If requested, certification of flame-retardant treatment, along with samples of said materials, must be submitted to Orange County Fire Rescue Services Department. It is recommended certifications of flame retardant treatments be available at show site.
- 4) The upper deck of multi-level exhibits, if larger than three hundred (300) square feet, shall meet the following requirements:
 - a. Upper level may not have a “cover” of any kind (e.g., roof, ceiling, tenting, lattice, fabric and plastic).
 - b. Exhibits with an enclosed room or occupied second story must post notice at the bottom of the stairway, indicating maximum permitted occupancy (or total permitted weight load of the second level).
 - c. If second level is to be occupied and greater than three hundred (300) square feet, two (2) stairways are required, remote from each other. If second level is to be occupied and less than three hundred (300) square feet, one (1) set of stairs is permitted. All stairs must be a minimum of three feet (3') in width, equipped with a handrail on at least one (1) side and constitute a “straight run” or be “squared off.” Spiral stairs or winders are not permitted.
 - d. Individual areas of upper decks or covered areas must be limited to dimensions that do not exceed one thousand (1,000) square feet.

- e. If the upper deck, or covered area, is greater than one thousand (1,000) square feet, a clear fire break (unobstructed aisle), of not less than ten feet (10') must be provided on all four (4) sides of each one thousand (1,000) foot area. To avoid transfer of fire to another area, the firebreak (unobstructed aisle) shall not contain displays, furniture, or other materials.
- f. The ten foot (10') clear space may be spanned by an overhead bridge or canopy which must not exceed four feet (4') in width. The bridge or canopy must be constructed of non-combustible materials.
- g. Exhibitor must install a single station and battery operated smoke detector on the interior of each covered exhibit or structure regardless the square footage. The detector must sound an audible alarm and be installed per manufacturer's instructions
- h. Exhibitor must provide a portable, dry chemical fire extinguisher for each level or each covered exhibit or structure. At least one (1) 2-A, 10-BC portable type fire extinguisher must be provided for each three hundred (300) square feet. Fire extinguishers must be mounted in a visible location, near exit doors, and be accessible at all times.

C. Required Fire Watch Personnel

Orange County Fire Rescue Services Department requires firewatch personnel for:

- ALL multi-level exhibits (regardless of the square footage) and
- All other covered exhibits exceeding three hundred (300) square feet.

The following guidelines apply:

The exhibitor is required to order firewatch personnel through the OCCC Event Management department no less than two (2) weeks before the show moves in. Firewatch is required:

- a. For ALL multi-level exhibits (regardless of the square footage) and all other covered exhibits exceeding three hundred (300) square feet.
- b. On all show days
- c. Beginning one half (1/2) hour prior to show opening and ending one half (1/2) hour following show closing. Fire watch personnel are charged at the prevailing rate.
- d. To place order, contact: the OCCC Event Management department. Phone: (407) 685-9882 Fax: (407) 685-9866

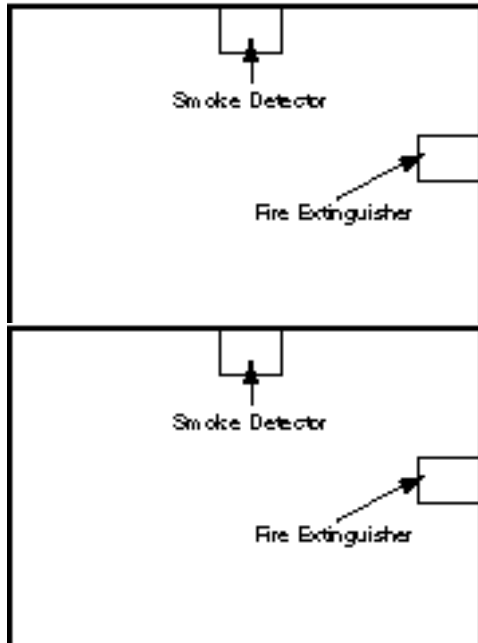
D. Alternative to Fire Watch Personnel (Automatic Extinguishing System)

This alternative to fire watch personnel applies to the first level of exhibits with an occupiable second level, regardless the size and/or single-story covered exhibits where the covered area exceeds three hundred (300) square feet.

- 1) Automatic sprinkler systems must be designed in accordance with N.F.P.A. 13 1991 Edition.
- 2) These systems may be connected to the Convention Center's existing standpipe system and in some cases, the domestic water supply. Connections to water systems must be made by the Orange County Convention Center.
- 3) Extinguishing system designs must be part of the original plan submissions. Orange County Fire Rescue Services Department requires permitting and testing.
- 4) Exhibits or structures protected by an automatic extinguishing system must have flow alarm, audible and visual, within that area. This alarm is to be a local type, sounding in the vicinity of the exhibit or structure.
- 5) Exhibitor must install at least one (1) single station, battery operated smoke detector on the interior of each covered exhibit or structure regardless the square footage. The detector must have an audible alarm and be installed per the manufacturer's instructions.
- 6) Exhibitor must provide a portable, dry chemical fire extinguisher for each level or each covered exhibit/structure. At least one (1) 2-A, 10-BC portable type fire extinguisher must be provided for each three hundred (300) square feet. Fire extinguishers must be mounted in a visible location, near exit doors, and be accessible at all times.

If you have questions regarding these guidelines, contact:
 Event Management
 Orange County Convention Center
 Phone: (407) 685-9882
 Fax: (407) 685-9866

If you have questions regarding Fire Code, contact:
 Orange County Fire Rescue Services Department
 Phone: (407) 685-9811
 Fax : (407) 685-9866



Covered Exhibits

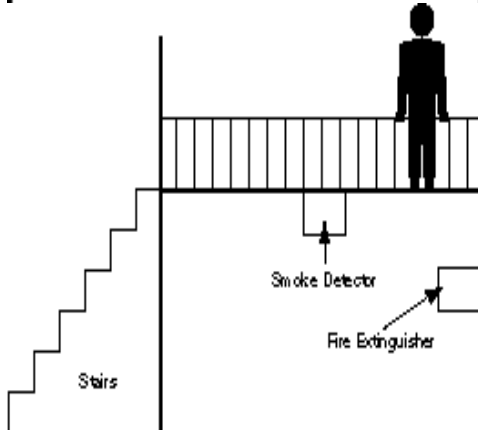
299 sq. ft. or less

- Firewatch or Extinguishing System Not Required
- **All Booths to be Constructed as Required by Applicable Codes and Standards**

Covered Booth, Tent and Theatre

300 sq. ft. to 1,000 sq. ft. - maximum allowed

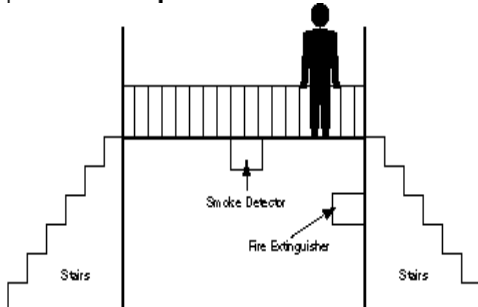
- Firewatch or Extinguishing System Required
- All Booths to be Constructed as Required by Applicable Codes and Standards



Multi-Level Exhibits

299 sq. ft. or less

- Firewatch or Extinguishing System Required
- Minimum 1 Stair Required
- All Booths to be Constructed as Required by Applicable Codes and Standards



Multi-Level Exhibits

300 sq. ft. to 900 sq. ft. - maximum allowed

- Firewatch or Extinguishing System Required
- Minimum 2 Stairs Required
- All Booths to be Constructed as Required by Applicable Codes and Standards

ORANGE COUNTY FIRE RESCUE DEPARTMENT (OCFRD) TENT STANDARD 6000

This Standard operates under the authority of Orange County, Florida Ordinance and State Statutes.

1.1 Scope

This standard covers all tents and membrane structures having an area in excess of 200 square feet or canopies having an area in excess of 400 square feet. Temporary membrane structures, tents, or canopy structures used exclusively for camping and structures located on the private property of one or two family detached dwellings are exempt from the requirements of this standard.

1.1.1 When the term tent is used, it also applies to membrane structures.

1.2 Appeal

If a party is not satisfied with a decision of the Fire Marshal, an appeal may be made to the Orange County Fire and Life Safety Board of Appeals, as provided by State Law.

2. Plans and Specifications

2.1 A scaled or dimensioned floor plan identifying furnishings, exhibits, pipe and drape, exiting, exit widths, aisles, seating, tables, fire alarm or public address systems, emergency and exit lighting, HVAC units, emergency power sources, and panic hardware shall be provided to the Orange County Fire Marshal's Office at the time of permit submittal.

2.2 All applications for tent permits shall include a scaled or dimensioned site plan indicating the location of the tent(s), distances from other buildings, and vehicular access.

2.3 Stages and platforms must not exceed their allowable load limits. The minimum load limit design of stages or platforms shall be a minimum of 100 pounds per square foot (PSF).

2.4 Seating for assembly use accommodating more than 200 persons shall be fastened together in groups of not less than three (3) and not exceeding seven (7).

2.5 Documentation shall be provided that all tent fabric meets the requirements of NFPA 701, *Standard Methods of Fire Tests for Flame-Resistant Textiles and Films*.

2.6 Covered booths and/or multi-level booths are not permitted without prior review and approval by the Fire Marshal.

2.7 A scaled layout shall be provided for all tents used for the sale of pyrotechnics.

2.8 Main Aisles in assembly occupancies in large tents, as defined in this section, aisle widths shall at no time be less than outlined in Table 2.9.1 under **Alternate requirements:**

Large Tents

- A single tents or combination of tents with only one multi-purpose room of 12,000 square feet or more;
- Multi-purpose tents used as a mixed occupancy or assembly with occupant loads exceeding 300;
- Tents more than 4,500 square feet used for exhibit or display;
- All other tents that do not meet the definition of Small Tents;

2.9 Main aisles in assembly occupancies in small tents, as defined in this section, aisle widths shall at no time be less than aisle dimensions outlined in Table 2.9.1 under **NFPA 101 requirements.**

Small Tents

- A single tent or combination of tents with only one multi-purpose room of less than 12,000 square feet that is not being used for exhibition/display or part of a mixed occupancy;
- Multi-purpose tents used as a mixed occupancy or assembly with occupant loads less than 300;
- Tents less than 4,500 square feet used for exhibit or display.

2.9.1

Aisles

NFPA 101

*Alternate

Classroom

63" (44+19)

85" (66+19)

Banquet

82" (44+19+19)

104" (66+19+19)

General Session

44"

66"

Exhibits

44"

66"

Banquet Seating Aisles - Provide aisles such that the maximum travel distance from any point to the closest aisle or egress door does not exceed 36 feet.

2.10 Rows of seating served by aisles or doorways at both ends shall not exceed 100 seats per row. The 12" minimum clear width of aisle access way between such rows shall be increased by 0.3 inches for every seat over a total of 14 as outlined in Table 2.10.3, but shall not be required to exceed 22 inches.

2.10.1 Rows of seating served by an aisle or doorway at one end only shall have a path of travel not exceeding 30 ft. in length from any seat to an aisle. The clear width of aisle access way between such rows shall be in accordance with Table 2.10.3.

2.10.2 Aisle access ways serving seating for Classroom, Banquet or General Session floor plans shall comply with Table 2.10.3.

2.10.3

Aisle Access ways

NFPA 101

Classroom

36" (average)

Banquet

56" (average)

General session 14 seats per row

12"

General session >14 seats per row

12" + 0.3" each chair (max 22")

General Session Dead-end 7 per row

12"

General Session Dead-end > 7 per row

12" + 0.6" each chair

(Note: dead-end rows may not exceed 30 feet)

2.11 If approval of the set-up of the tent/membrane structure is not received by the Orange County Fire Marshal's Office, the structure cannot be occupied.

2.11.1 The tent company who permits the tent/membrane structure must contact the Orange County Fire Marshal's Office for a fire safety inspection of the structure at least one business day prior to the show or event beginning.

2.11.2 Tent/membrane structure permit applications must be submitted to the Orange County Building Division, Zoning Department, and Fire Marshal's Office in a timely manner, with all the pertinent information outlined in this Standard, for the county departments to successfully provide approval prior to the date of the tent set-up. It is strongly recommended that for larger tent/membrane structures that a pre-construction meeting be requested through the Orange County Fire Rescue Departments' Office of the Fire Marshal.

3. Location and Spacing

3.1 All tents and membrane structures must have a minimum of 20 ft. clearance from exterior obstructions to provide an area to be used as a means of emergency egress by the occupants and access by emergency personnel. Tents may be attached together as long as the perimeter around the structures complies with this section.

3.2 Tops of tent stakes shall be blunt. If the stakes are not blunt, they shall be covered so as to prevent injury.

3.2.1 All stake lines adjacent to exits shall be visible.

4. Exits

4.1 There shall be a minimum of two (2) separate exits from any point in the structure where the occupant load is less than 500 persons. Where occupant loads are between 500 and 999 persons there shall be a minimum of three (3) separate exit doors from any point in the structure. Where occupant loads are 1,000 persons or greater there shall be a minimum of four (4) separate exit doors from any point in the structure.

4.2 The number of required exits and their exit widths for assembly occupancies in large tents, as defined in section 2.8 of this standard, **will be based on the alternate method of protection and must be increased based on 1.5 times the calculated occupant load.** Egress widths and number of exits is based on calculated occupant load for the size of the tent or the documented maximum occupant load identified by the property management.

4.3 The number of required exits and their exit widths for assembly occupancies in small tents, as defined in section 2.9 of this standard, **will not be based on the alternate method of protection and will be as specified in NFPA 101 on the calculated occupant load.**

4.4 There shall not be changes of elevations in excess of one-half (1/2) inch at exits. Any changes of elevations at exits must be in compliance with NFPA 101 and provided with the appropriate stairs or ramps.

4.5 Panic hardware or an approved equivalent must be provided on all exit doors that are lockable.

4.6 Exit doors are required to be placed at a distance from one another not less than one-half (1/2) the length of the maximum overall diagonal dimension of the structure or area served, measured in a straight line between the nearest edge of the exit doors.

4.6.1 Exits shall remain accessible and unobstructed while the tent is occupied.

4.6.2 If exits are covered while the tent is occupied; tent flaps or canvas curtains shall be arranged so that when opened they can readily be moved to the sides so that they create an unobstructed opening in the tent wall of the minimum width and height required for door openings.

4.6.3 Exits shall be designed and arranged to be clearly recognizable and distinctly marked as a means of egress.

4.7 If fencing, barricade, or similar material is installed around the perimeter of a tent, that portion that would cover the exits when the tent is not occupied shall be a separate piece and removed when the tent is occupied as defined in NFPA 101, 7.2.1.1.3.

4.8 For assembly occupancies in large tents as defined in section 2.8 of this standard, exits shall be so arranged that no point within the tent is more than 100' from an exit.

Exception: No point within a tent used for the sale of pyrotechnics shall be more than 50' from an exit.

4.8.1 For assembly occupancies in small tents as defined in section 2.9 of this standard; exits shall be so arranged that no point within the tent is more than 150' from an exit. Exception: No point within a tent used for the sale of pyrotechnics shall be more than 50' from an exit.

4.9 Exits shall be clearly marked with externally illuminated exit signs. Private party tents not exceeding 1,200 square feet shall not be required to have illumination in accordance with this section.

4.9.1 Directional exit signs if required shall be provided in accordance with NFPA 101, 7.10.

4.9.2 Exits, exit access, and exit discharge shall be illuminated at all times. Emergency lighting shall be provided as required by NFPA 101. Private party tents not exceeding 1,200 square feet shall not be required to have illumination in accordance with this section.

5. Occupant Load

5.1.1 The occupant load shall be posted in all tents used for assembly purposes, regardless of occupant load.

5.1.2 Occupant loads shall be calculated by the square footage of the structure multiplied by 7 sq. ft per person for concentrated use (general session, classroom, reception) or 15 sq. ft. per person for less concentrated use (exhibits or banquet). Maximum occupant loads may be proposed to the Fire Marshal based on written documentation.

6. Cooking and Heating Equipment

6.1 Cooking is not permitted without prior review and approval by the Orange County Fire Marshal. Temporary and limited heating of food products by sterno is acceptable when contained in a noncombustible container and constantly attended and supervised.

6.2 HVAC equipment if installed, shall comply with the Florida Mechanical Code and the appropriate NFPA Standard.

7. Fire Hazards

7.1 No storage or handling of flammable or combustible liquids or gases shall be permitted at any location where it could jeopardize egress from the tent.

7.2 Refueling of equipment shall not be permitted inside a tent.

7.3 The ground enclosed by any tent and a minimum of 10'-0" outside of such tent shall be cleared of all flammable or combustible material or vegetation and the premises shall be kept free of such during the use of the tent. Live landscaping is exempt from the requirements of this section.

7.4 Decorative or acoustical materials as outlined in NFPA 1, 13.7.4.3.6 such as hay, paper, straw, wood chips, shavings, foams, and plastics are strictly prohibited unless flame retardant and approved by the Orange County Fire Marshal's Office.

7.5 Open flames are not permitted without prior review and approval by the Orange County Fire Marshal.

7.6 Pyrotechnics are not permitted without prior review and approval by the Orange County Fire Marshal.

7.7 Vehicle parking or display in the structures is not permitted without prior review and approval by the Orange County Fire Marshal.

7.8 Smoking is prohibited unless previously approved by the Orange County Fire Marshal's Office.

7.8.1 "No Smoking" signs shall be posted throughout the tent and outside of each entrance/exit.

8. Fire Extinguishers

8.1.1 A minimum 2A10BC dry chemical fire extinguisher shall be provided within 75'-0" of any point in the structure. Exception: Where a functioning garden hose that can reach all portions of the private tent, that does not exceed 1,200 square feet, is provided

9. Fire Alarm and Emergency Communications

9.1 Tents used for assembly use with an occupant load of 300 or more people shall provide a fire alarm system, public address system with constantly attended location, or an alternate method of protection approved by the Orange County Fire Marshal's Office. An acceptable method of emergency forces notification shall be provided satisfactory to the Fire Marshal. Tents without sides that are open, accessible, and unobstructed on all sides at all times shall be exempt from the requirements of section 9.1 unless specifically mandated by the Fire Marshal.

10. Electrical Installations

10.1 Electrical installations shall comply with NFPA 70, *National Electrical Code*.

11. Crowd Managers and Orange County Fire Department Fire Watch

11.1.1 Trained Crowd Managers, with a means of emergency forces notification, shall be provided for all events at a ratio of 1 to 250 people. When occupant loads exceed 250 individuals, additional trained crowd managers or crowd manager supervisors shall be provided at a ratio of 1 for every 250 occupants..

11.1.2 The Fire Marshal shall have the authority to require Orange County Fire Department Standby Fire Personnel, emergency response equipment, or an approved fire watch when potentially hazardous conditions or a reduction in a life safety feature exist due to the type of performance, display, exhibit, occupancy, contest or activity, an impairment to a fire protection feature, or the number of persons present.

11.1.3 One (1) Orange County Fire Department Fire Watch Personnel with a means of emergency forces notification shall be provided when actual occupant loads exceed 1,000 individuals in addition to the crowd manager requirements of 11.1.1.

12. Special Requirements

12.1 An Orange County Fire Rescue Department's Special Event Permit is required for all events inside of tents that are being used for exhibition or display purposes. The tent company shall provide general floor plans and the OCFRD tent checklists. The hotels or event coordinator shall submit specific floor plans.

12.2 An Orange County Fire Rescue Department's Special Event Permit is not required for events inside of tents such as banquet, reception, classroom or general session settings. The tent company shall provide general floor plans and the Orange County Fire Rescue Department's tent checklist.