

Regulations & Guidelines

BOOTH CONSTRUCTION REGULATIONS & DIAGRAMS

STANDARD LINEAR BOOTH

Definition: One or more standard booth units (10 x 10) in a straight line.

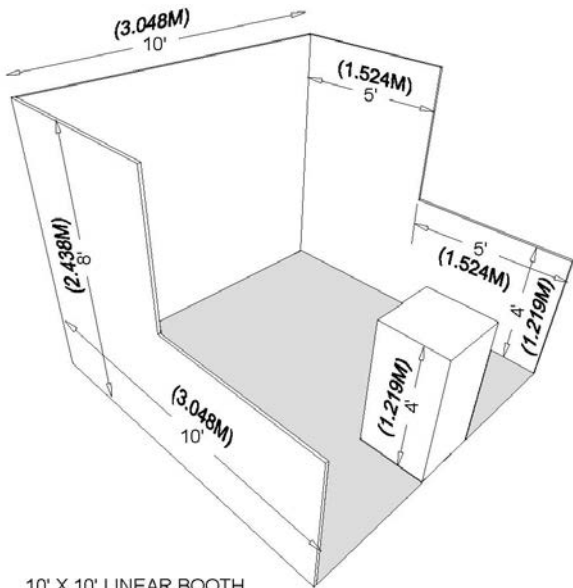
Height Limit Specifications:

- Back 5' of booth has a maximum height of 8'.
- Front 5' of booth has maximum height of 4'.
- Displays are limited to 4' in height, in the front portion of each booth. Machinery, equipment, or products may not be shown on a raised/built-up platform or counter if they interfere with the height restrictions. If your display exceeds 4' in height, it is required that you place it away from the 5' x 10' sightline area in the front of the booth in order to provide a "see-through" lane for neighboring exhibitors.
- 10x20 booths or larger may request to have a floor-supported header. You may request to extend one 4 sq ft area or two 2 sq ft areas to 8' in height.
- All booths must be carpeted and no cement is allowed to show at sides or front of booth due to safety reasons.

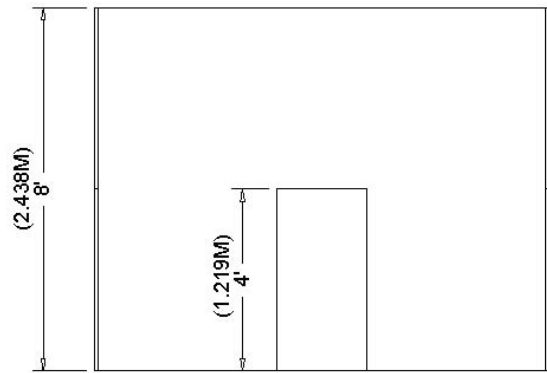
Approvals for hanging signs and for variances will not be considered for standard linear booths.

Diagram continued on page 2

arm TechCon



10' X 10' LINEAR BOOTH



FRONT VIEW