

3 000 to 4 725

2 100 to 2 999

1100 to 2043

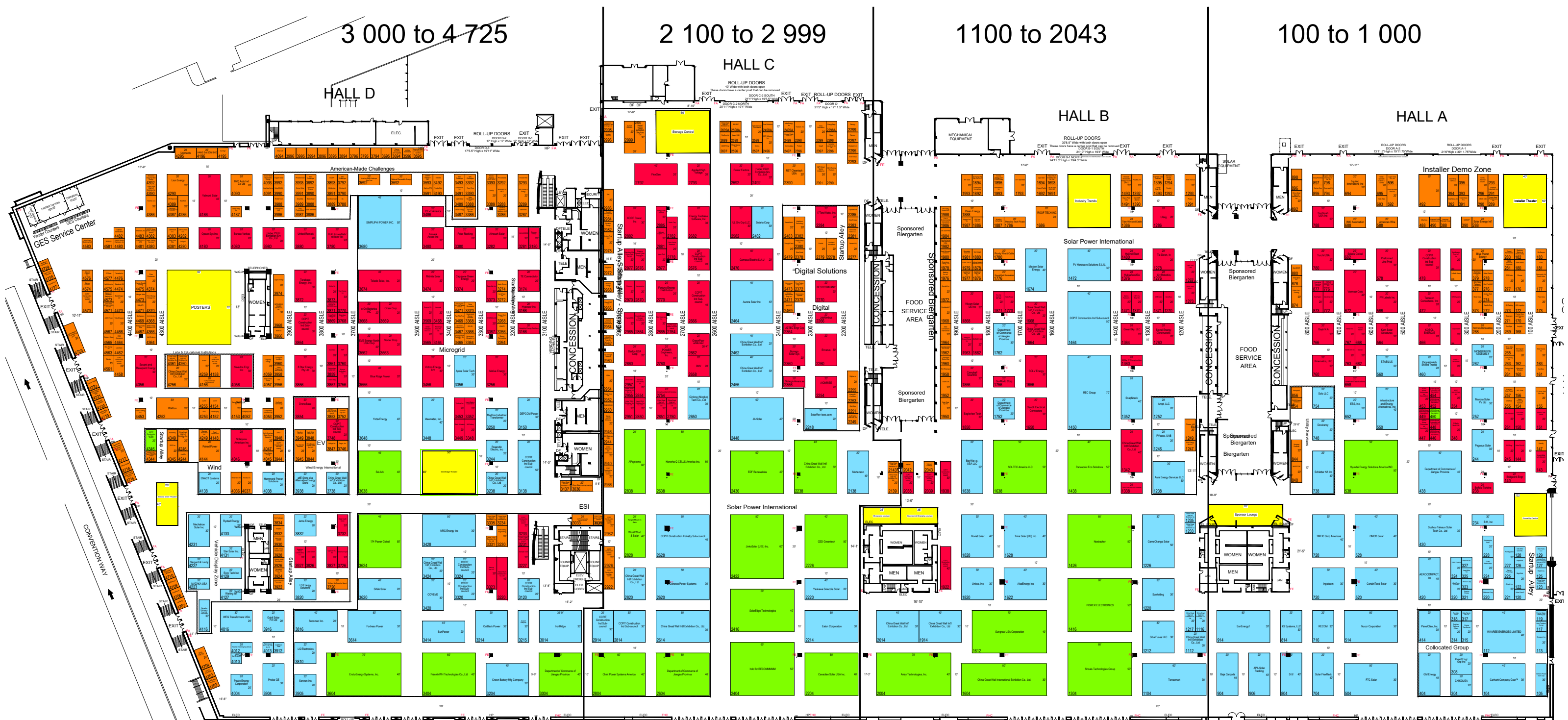
100 to 1 000

HALL D

HALL C

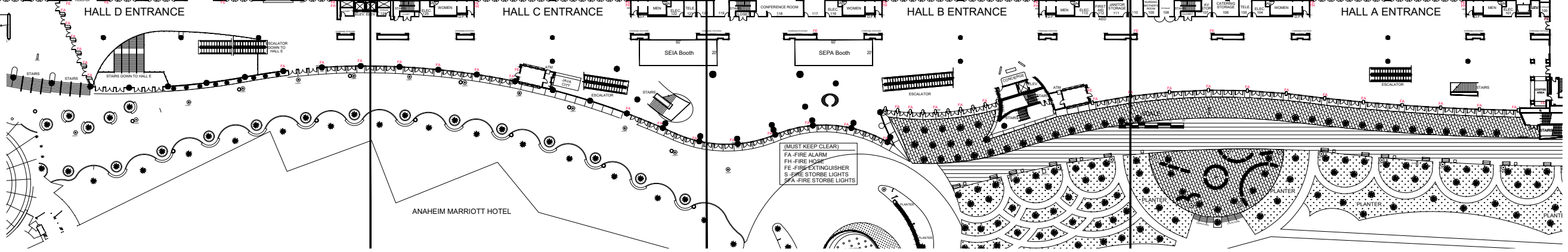
HALL B

HALL A



TARGET INBOUND DATES AND TIMES

- FRIDAY, SEPT 16TH, 1PM MOVE IN
- SATURDAY, SEPT 17TH, 8AM MOVE IN
- SUNDAY, SEPT 18TH
- MONDAY, SEPT 19TH
- SHOW MANAGEMENT



RE+  
 Anaheim Convention Center - Halls A,B,C,D  
 September 19 - 22, 2022

EVERY EFFORT HAS BEEN MADE TO ASSURE THE ACCURACY OF ALL INFORMATION CONTAINED ON THIS FLOOR PLAN. HOWEVER, NO WARRANTIES, EITHER EXPRESSED OR IMPLIED, ARE MADE WITH RESPECT TO THIS FLOOR PLAN. THE LOCATION OF BEARING COLUMNS, UTILITIES OR OTHER ARCHITECTURAL COMPONENTS OF THE FACILITY IS A CONSIDERATION IN THE CONSTRUCTION OF EACH OF OUR STALLS. IT IS THE RESPONSIBILITY OF THE EXHIBITOR TO PREVIOUSLY NOTIFY THE FACILITY TO VERIFY ALL DIMENSIONS AND LOCATIONS.

COPYRIGHT © BY GUESA EXPERIENCE SPECIALISTS. ALL RIGHTS RESERVED. NO PART OF THIS PUBLICATION MAY BE REPRODUCED, STORED IN A RETRIEVAL SYSTEM OR TRANSMITTED IN ANY FORM OR BY ANY MEANS, ELECTRONIC, MECHANICAL, PHOTOCOPYING, RECORDING, OR OTHERWISE, WITHOUT EXPRESS WRITTEN CONSENT OF GUESA EXPERIENCE SPECIALISTS.

