



City of Anaheim
Fire Department
Fire Prevention Bureau



Specifications and Requirements

Subject: Disneyland Resort Hotels, General Event Requirements

THE DISNEYLAND HOTEL

I. Grand Ballroom Registration Area

Displays may be placed on the entire east wall no more than eight feet in depth from the back wall. Do not measure eight feet from the front of the display case or window. Un-manned tables, maximum of three feet in depth by eight feet in length, may be placed up against the west wall.

II. Ballroom Foyer

Displays may be placed in the following areas: east wall between the columns, west wall between Grand Ballroom main entrance doors, no more than eight feet in depth, not to protrude further than the end of the walls on each side.

Grand Ballroom wall across from the up and down staircase: one un-manned table, maximum of three feet in depth by eight feet in length or two tables un-manned, three feet in depth by fourteen feet in length may be placed up against the wall.

Center Lounge across from exterior glass exit doors: un-manned tables, three feet in depth by seventeen feet in length may be placed up against the wall in the two cut-outs. Tables shall not block egress path into the Exhibit Hall Elevator Foyer.

III. North Lounge

Displays may be placed against the west and northeast walls, not to exceed eight feet in depth. No items shall be placed in front of exit doors or egress paths. Entrance unit may be placed over north entrance doors that lead to the south exhibit hall. Entrance unit shall not obstruct exit doors or egress path.

IV. South Lounge

Displays may be placed against east, west, south and north walls. Exit doors and egress path shall remain clear and unobstructed at all times.

V. Exhibit Hall Foyer Elevators

Displays may be placed in the north cutout up against the wall not to exceed eight feet in depth. Displays shall not obstruct exit door or egress path.

VI. Magic Kingdom East and West Ballrooms

Displays may be placed on the east wall in the cut-out portion only, not to exceed six feet in depth off the back wall and west wall not to exceed six feet in depth.

Displays four feet in depth by twenty feet in length may be placed in the cut-out next to the roof top down escalator located in the Magic Kingdom West Ballroom foyer in the northwest corner.

Displays five feet in depth by twelve feet in length may be placed between the south entrance doors into the Magic Kingdom West Ballroom.

Displays may be placed in the two cutouts along the Magic Kingdom West Ballroom north foyer no more than five feet in depth from the wall.

DISNEY'S GRAND CALIFORNIAN HOTEL & SPA

I. West Registration

Displays may be placed in the cut-out on the west wall, not to protrude further than the edge of the sidewall. A clearance of three feet around fire and medical equipment shall be provided.

II. Sequoia South Foyer

Displays may be placed in the cut-out on the south wall, not to protrude further than the edge of each sidewall. Un-manned tables, three feet in depth by eight feet in length, may be used in front of South Ballrooms A, B, C and Sorrel A and B, but shall be placed up against the walls.

III. Sequoia West Foyer

Un-manned tables may be placed up against the west and east walls no more than two feet in depth. Exit doors that are located in cut-outs shall not be used for displays. Exception: Signage may be placed in these areas as long as they do not obstruct the exit door or egress path.

Displays may be placed in the cut-out diagonally across from the Wisteria meeting room. No displays shall protrude further than the edge of each sidewall. A clearance of three feet around fire equipment shall be provided.

IV. Sequoia North Foyer

No items shall be placed in this area.

V. Trillium B

A six foot table may be placed in each cut-out not to obstruct exit doors or exit pathway.

DISNEY'S PARADISE PIER HOTEL

I. Pacific Ballroom Registration

One table five feet in depth by eight feet in length, may be placed next to the permanent registration counter up against the west wall in the cut-out.

II. Pacific Ballroom Foyer

Displays may be placed up against the walls, north of Pacific Ballroom A on both the east and west walls no more than three feet in depth or on one side only no more than five feet in depth.

GENERAL INFORMATION

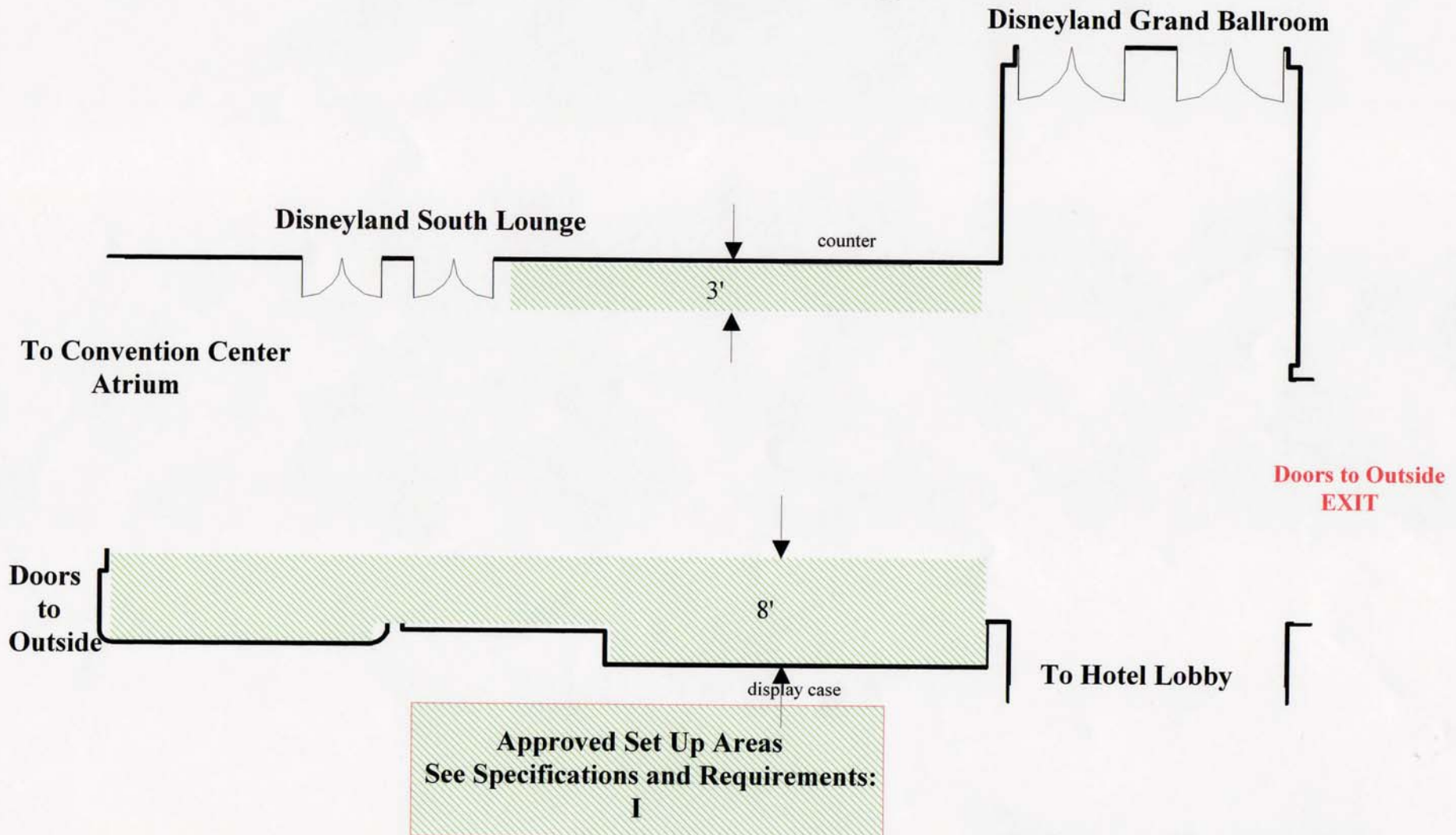
1. Candles, open flame devices (such as fire dancers) and pyrotechnics require a permit from the Anaheim Fire Department and are fee based.
2. Banquet tables shall be divided from the tradeshow area by a ten foot aisle. Exception: banquet tables placed within the tradeshow shall be curtained off by a three foot high drape or stanchion and exit openings shall be provided and approved by the Anaheim Fire Department.
3. Fire equipment such as strobes, manual pull stations, smoke detectors, fire extinguishers and fire hose cabinets, etc., shall not be obstructed and shall remain visible at all times.
4. All registration set-ups and food service banquet displays shall be included on the floor plan submitted to the Anaheim Fire Department.
5. If columns are included in the aisles, the aisle must be the required width plus the width of the columns.
6. Egress paths and all exits shall remain clear and unobstructed and all times.
7. Exit doors and exit signs shall not be covered unless approval is granted by the Anaheim Fire Department.
8. Banquet, classroom or theatre style set-ups do not require a plan submittal unless minimum aisle requirements are not met and egress doors or exit signs are covered, then a fee based plan submittal is required.
9. Tradeshow or event requests outside the scope of this specification will require approval from the Anaheim Fire Department.

For further information regarding these requirements contact:

Fire Prevention Bureau at (714) 765-4040 between the hours of 8:00 a.m. to 5:00 p.m., Monday through Friday.



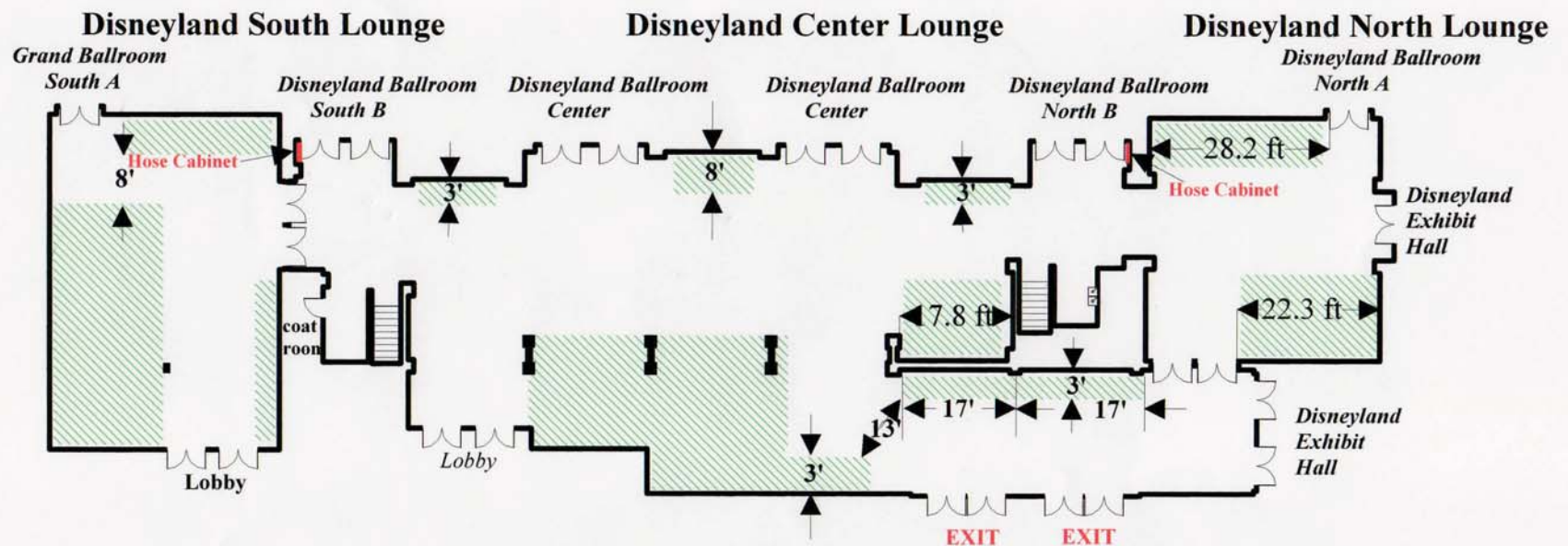
Disneyland Grand Ballroom Registration Area



Approved by AFD and DFD 8-08



Disneyland Ballroom Foyer



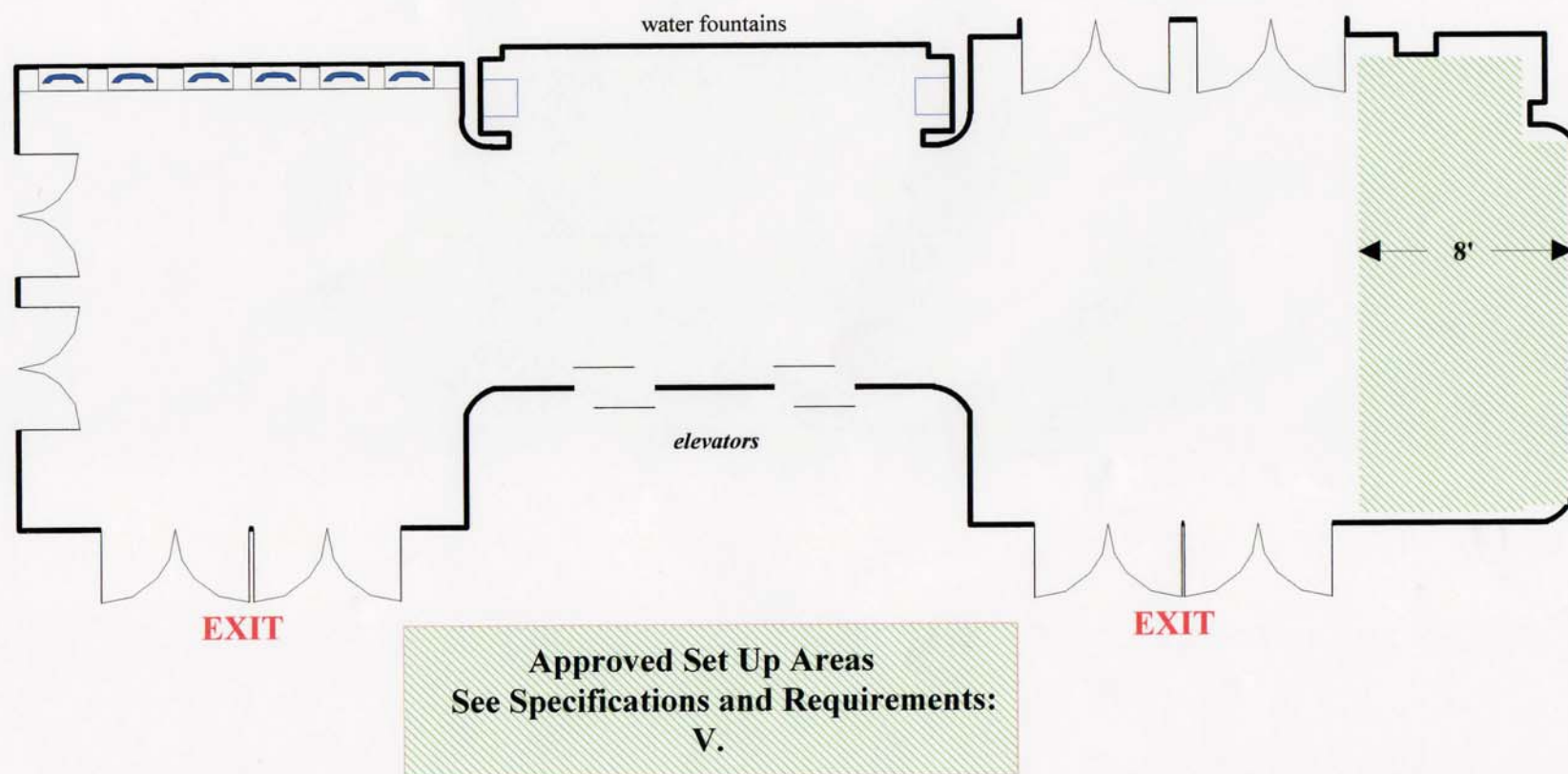
Approved Set Up Areas
See Specifications and Requirements:
II III IV

Approved by AFD and DFD 8-08



Disneyland Exhibit Hall Foyer

Exhibit Hall

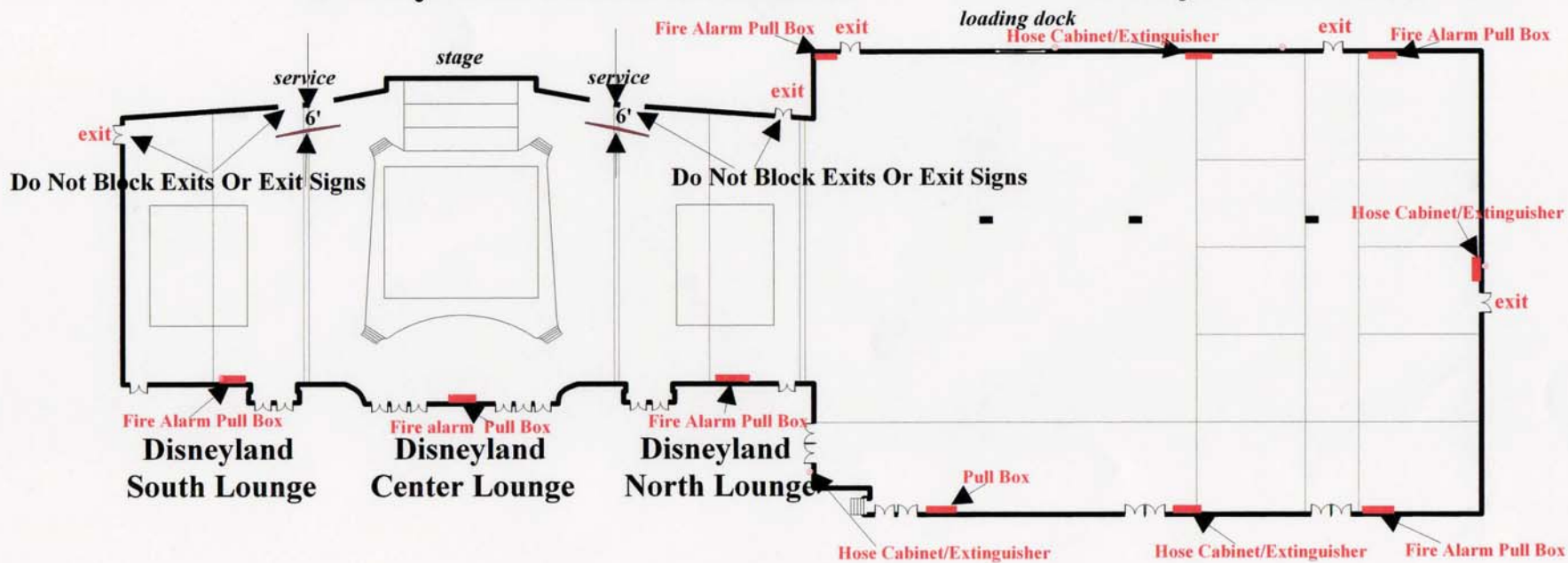


Approved by AFD and DFD 8-08



Disneyland Grand Ballroom

Disneyland Exhibit Hall



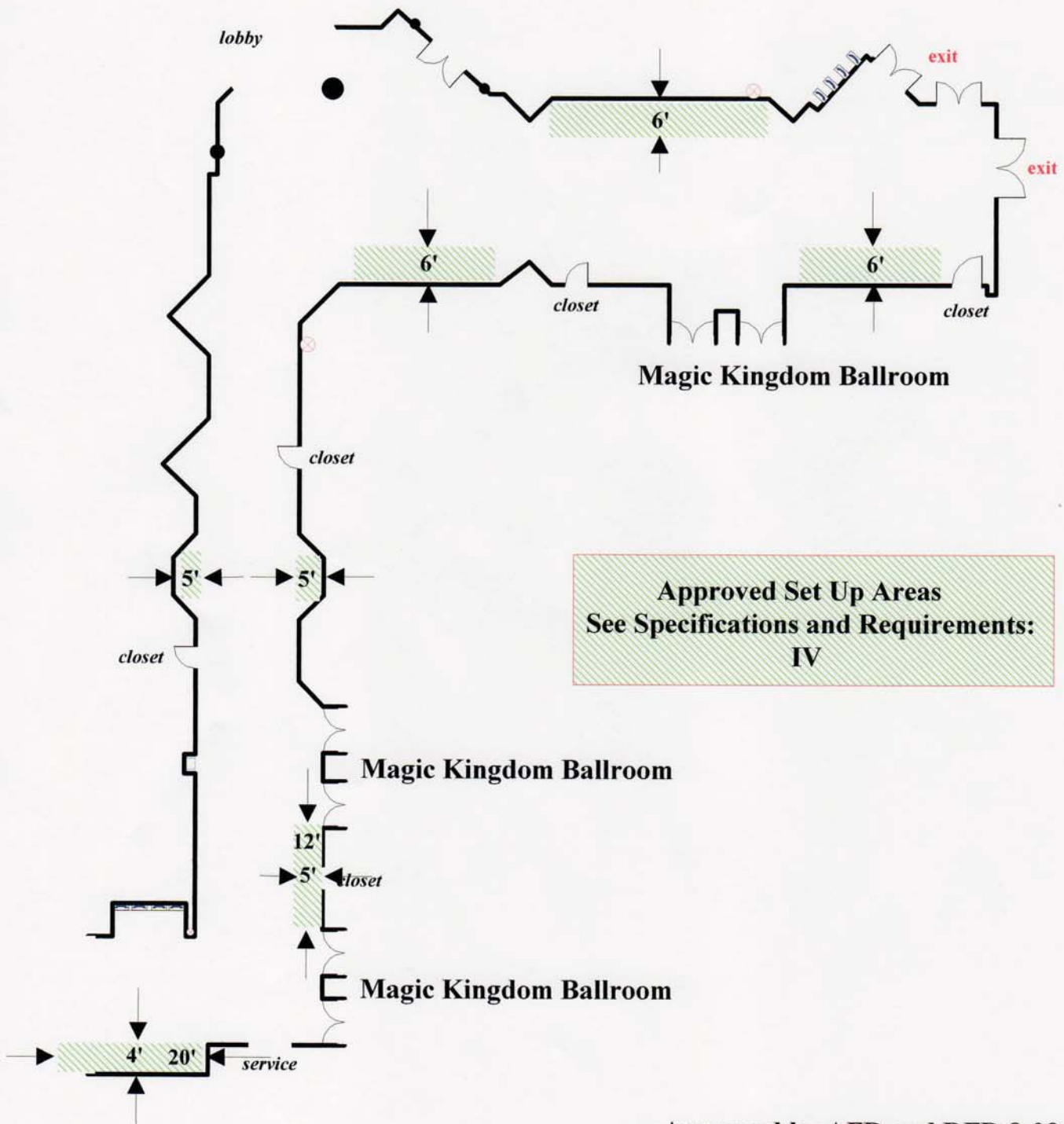
See Specifications and Requirements
General Information

Do Not Block Any Exits

Approved by AFD and DFD 8-08



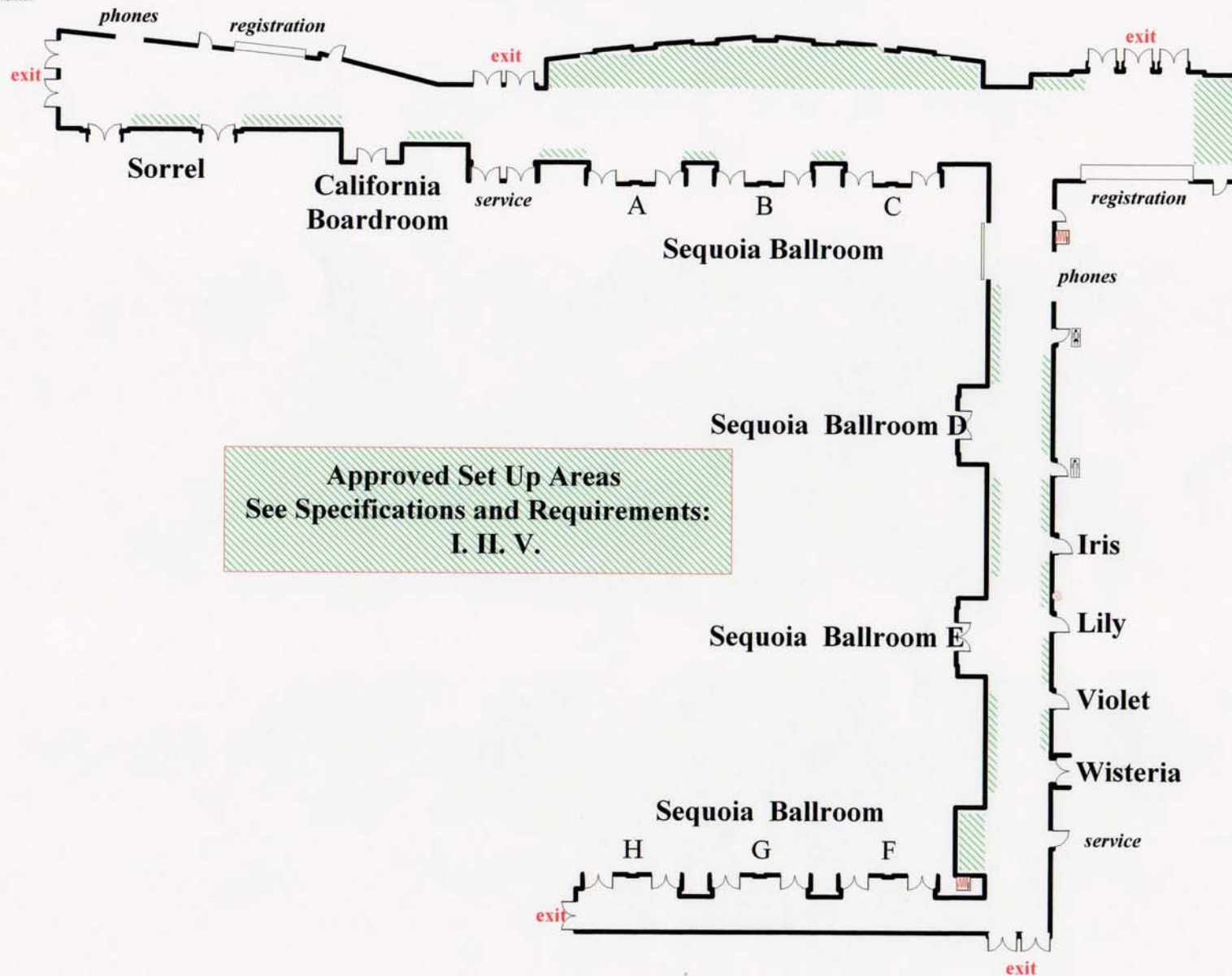
Magic Kingdom Ballroom Foyer



Approved by AFD and DFD 8-08

Grand California Hotel

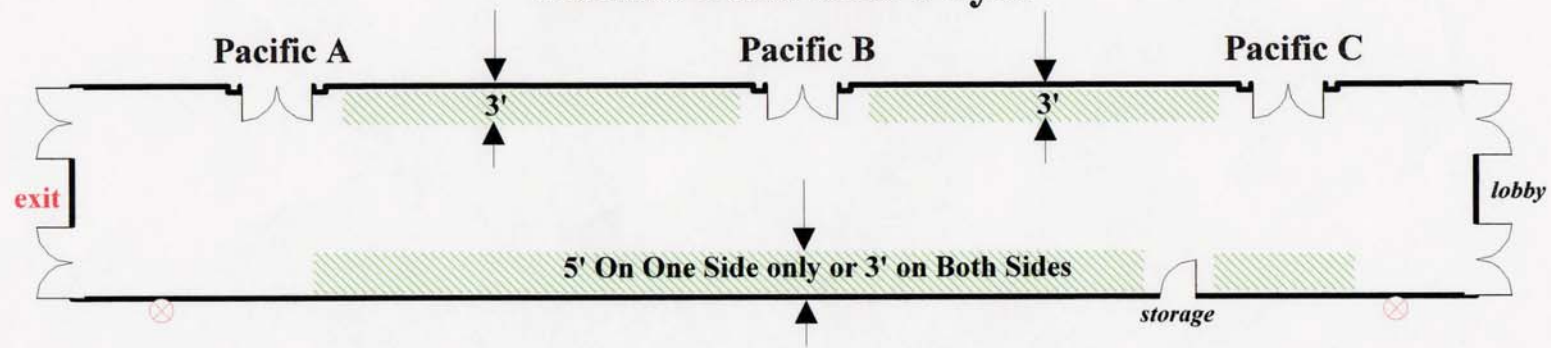
Sequoia Ballroom Foyer



Approved by AFD and DFD 8-08



Paradise Pier Hotel Pacific Ballroom Foyer



Approved Set Up Areas
See Specifications and Requirements:
II
Also See I For Registration

Approved by AFD and DFD 8-08