



Education & Events March 3-7, 2020
Trade Show:
ACC North Halls, Hilton, Marriott March 4-6, 2020
Anaheim Convention Center Main Halls March 5-7, 2020
Anaheim, CA USA



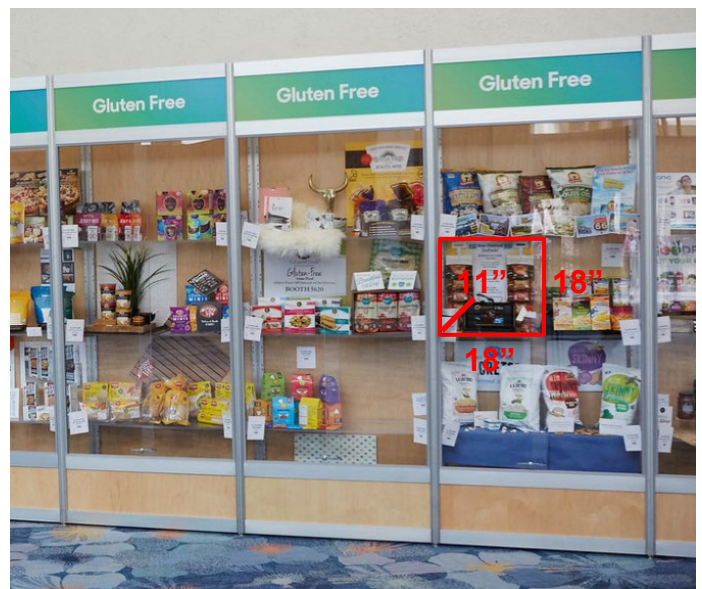
LOGISTICS & SPECIFICATIONS: Product Showcases

Thank you for purchasing a Product Showcase. In order to meet the deadlines and specifications for this opportunity, please read the following information in its entirety. If you have any questions, contact your Client Service Specialist using the contact information listed below

Product Showcase Unit Sizes:

Example of Product Showcase Unit

- **Category of Showcase:** Business Solutions, Frozen/Refrigerated, Grocery, Herbs/Medicinal, Hot Products, Kosher, Lifestyle, Organic (certified), Specialty Diet, and Vitamin/Supplements.
 - 18" H x 18" W x 11" D
- **Category of Showcase:** Bulk & Food Service
 - 30" H x 18" W x 11" D



Guidelines:

- **Supplies:** Exhibitors are responsible for bringing any necessary supplies to set up the Product Showcase(s). We recommend bringing tape, scissors, staplers, and/or markers.
- **Weight:** Product displays **CANNOT exceed 20lbs** in weight. Anything exceeding this limit will be removed.
- **Electricity:** Electricity is not provided or allowed in the showcases. Battery operated lights or moving display objects are welcome.
- **Signage:** Product Showcases are assigned alphabetically within the category contracted based on "EXHIBITING AS" name and cannot be changed onsite.
- **Security:** Although we make every effort to secure the Product Showcase area, New Hope is not liable for any lost or damaged goods while in display area.
We advise that you utilize empty bottles & packages for displays
- **DO NOT TAMPER WITH OTHER DISPLAYS.** Tampering will result in your product showcase being eliminated; this includes moving name tags.
- **Removal:** Remove everything from the showcase at the time listed below under "Product Removal". All products left in the showcase after the "Left Products Donated" time will be donated to Second Harvest Food Bank.

Setup Schedule:

Please refer to your contract for the category you selected. The showcase units will only be open and accessible during these times.

Category of Showcase: Hot Products				
Location: ACC North Hall, Plaza Level				
	Tuesday, 3/3	Wednesday, 3/4	Thursday, 3/5	Friday, 3/6
Set-Up	10:00am-5:30pm			
Adjustments Times		8:30-9:30am 12:00-1:00pm 5:30-6:30pm	8:30-9:30am 12:00-1:00pm	8:30-9:30am
Product Removal				6:00-7:30pm
Left Products Donated				7:30pm

Category of Showcase: Bulk & Food Service, Business Solutions, Frozen/Refrigerated, Grocery, Herbs/Medicinal, Kosher, Lifestyle, Organic (certified), Specialty Diet and/or Vitamin/Supplements.					
Location: ACC Main Lobby, Level 1					
	Tuesday, 3/3	Wednesday, 3/4	Thursday, 3/5	Friday, 3/6	Saturday, 3/7
Set-Up	10:00am-5:30pm	10:00am-5:30pm			
Adjustment Times			8:00am-9:00am 12:00pm-1:00pm 5:00pm-6:00pm	8:00am-9:00am 12:00pm-1:00pm	8:00am-9:00am
Product Removal					4:00pm-5:30pm
Left Products Donated					5:30pm

Onsite:

To purchase onsite or if you have issues, please visit the Product Showcase Office located in the ACC, Level 1, Room 119. Please note showcase signage and location cannot be changed onsite.

Please note that if you have multiple product showcases in the same category, they are NOT guaranteed to be on the same shelf. For example, per the picture below, you could have spots 1 & 2 or 2 & 3 or 4 & 5, etc. Product showcases are arranged in alphabetical order by the "Exhibiting As" name listed in your exhibitor console.



Questions today? Contact us!
Client Service Specialist
(p) 303.998.9208
(e) esk@newhope.com