



# INSPIRING NEW WORLDS

Produced By  
**IDG**  
WORLD EXPO

JUNE 14-16, 2016 | LOS ANGELES

Hotel #	Name of Hotel	Distance to Los Angeles Convention Center	Room Type	Rate
 Hotel # 1	<b>Courtyard by Marriott L.A. Live</b> 901 West Olympic Avenue  <i>100% Non-Smoking Hotel</i>	2 BLOCKS	ROOM 1 KING	\$278.00 / \$298.00 single/double
			ROOM 2 QUEENS	\$299.00 / \$319.00 single/double  +\$20 each
 Hotel #2	<b>Doubletree Los Angeles Downtown</b> 120 South Los Angeles Street  <i>100% Non-Smoking Hotel</i>	2.00 MILES	ROOM 1 KING	\$299.00 / \$319.00 single/double
			ROOM 2 QUEENS	\$285.00 / \$285.00 single/double  +\$20 each
 Hotel # 3	<b>Hilton Checkers</b> 535 South Grand Avenue  <i>100% Non-Smoking Hotel</i> <i>Rooms with two beds are limited, based on availability at check-in</i>	1.2 MILES	ROOM 1 KING	\$304.00 / \$304.00 single/double  +\$30 each, triple/quad
 Hotel # 4	<b>JW Marriott at L.A. Live</b> 900 West Olympic Boulevard  <i>100% Non-Smoking Hotel</i>	1 BLOCK	ROOM	\$309.00 / \$319.00 single/double  + \$20 each, triple/quad
 Hotel # 5	<b>Kawada Hotel</b> 200 South Hill Street  <i>100% Non-Smoking Hotel</i>	2 MILES	ROOM	\$133.00 / \$133.00 single/double  +\$20 each, triple/quad



# INSPIRING NEW WORLDS

Produced By  
**IDG**  
WORLD EXPO

JUNE 14-16, 2016 | LOS ANGELES



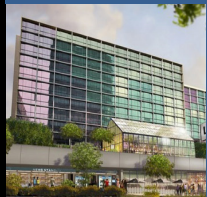
Hotel # 6

**LA Hotel Downtown**  
333 South Figueroa Street  
*100% Non-Smoking Hotel*

1.1 MILES

ROOM

\$249.00 / \$269.00  
single/double  
+\$40 each,  
triple/quad



Hotel # 7

**The Line – Los Angeles**  
3515 Wilshire Boulevard  
*100% Non-Smoking Hotel*

3 MILES

ROOM

\$309.00 / \$330.00  
single/double  
+\$20 each,  
triple/quad



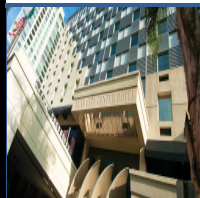
Hotel # 8

**Los Angeles Athletic Club**  
431 West Seventh Street  
*100% Non-Smoking Hotel*  
*Two persons maximum per room.*  
*Rooms with two beds are limited,*  
*based on availability at check-in.*

1.1 MILES

ROOM 1 BED

\$209.00 / \$209.00  
single/double  
No triple/quads



Hotel # 9

**Luxe City Center**  
1020 South Figueroa Street  
*100% Non-Smoking Hotel*

1 BLOCK

ROOM

\$275.00 / \$275.00  
single/double  
+\$10 each,  
triple/quad



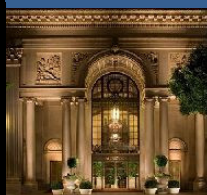
Hotel # 10

**Mayfair Hotel Los Angeles**  
1256 West Seventh Street  
*100% Non-Smoking Hotel*

1.1 MILES

ROOM

\$169.00 / \$169.00  
single/double  
+\$15 each,  
triple/quad



Hotel # 11

**Millennium Biltmore**  
506 South Grand Avenue  
*100% Non-Smoking Hotel*

1.2 MILES

ROOM - STANDARD  
ROOM - CLUB

\$219.00 / \$219.00  
Standard  
\$255.00 / \$255.00  
Club Level  
+\$30 each,  
triple/quad



entertainment  
software  
association



# INSPIRING NEW WORLDS

JUNE 14-16, 2016 | LOS ANGELES

Produced By  
IDG  
WORLD EXPO

 Hotel # 12	<p><b>Miyako Hotel</b> 328 East First Street</p> <p><i>Limited smoking rooms</i></p>	<p>2.2 MILES</p>	<p>ROOM</p>	<p>\$198.00 / \$198.00 single/double</p> <p>+\$20 each, triple/quad</p>
 Hotel # 13	<p><b>O Hotel</b> 819 South Flower Street</p> <p><i>100% Non-Smoking Hotel</i> <i>Two persons maximum per room.</i> <i>Rooms with two beds are limited;</i> <i>based on availability at check-in.</i></p>	<p>0.7 MILE</p>	<p>ROOM 1 QUEEN</p>	<p>\$199.00 / \$199.00 single/double</p> <p>Plus \$14.00 tax exempt service fee per night . No triple/quad</p>
 Hotel # 14	<p><b>Radisson Los Angeles @ USC</b> 3450 South Figueroa Street</p> <p><i>100% Non-Smoking Hotel</i></p>	<p>1.6 MILES</p>	<p>ROOM</p>	<p>\$199.00 / \$199.00 single/double</p> <p>+\$20 each, triple/quad</p>
 Hotel # 15	<p><b>Residence Inn Downtown L.A. Live</b> 901 West Olympic Avenue</p> <p><i>100% Non-Smoking Hotel</i></p>	<p>2 BLOCKS</p>	<p>STUDIO 1 KING STUDIO 2 QUEENS</p>	<p>\$293.00 / \$313.00 King Studio</p> <p>\$314.00 / \$334.00 Queen/Queen Studio</p> <p>+\$30 triple/quad</p>
 Hotel # 16	<p><b>Ritz-Carlton Los Angeles</b> 900 West Olympic Boulevard</p> <p><i>100% Non-Smoking Hotel</i></p>	<p>1 BLOCK</p>	<p>ROOM</p>	<p>\$509.00 / \$509.00 single/double</p> <p>+\$30 each, triple/quad</p>
 Hotel # 17	<p><b>Sheraton Downtown</b> 711 South Hope Street</p> <p><i>100% Non-Smoking Hotel</i></p>	<p>1 MILE</p>	<p>ROOM</p>	<p>\$249.00 / \$249.00 single/double</p> <p>+\$25 each, triple/quad</p>



# INSPIRING NEW WORLDS

Produced By  
**IDG**  
WORLD EXPO

JUNE 14-16, 2016 | LOS ANGELES



Hotel # 18

### Standard LA

550 South Flower Street

1 MILE

ROOM 1 KING

\$289.00 / \$289.00  
single/double

*100% Non-Smoking Hotel.  
One bed maximum per room.*

No triples/quads



Hotel # 19

### Westin Bonaventure Hotel

404 South Figueroa Street

1.1 MILES

ROOM

\$271.00 / \$291.00  
single/double

*100% Non-Smoking Hotel*

+\$20 each,  
triple/quad



Hotel # 20

### Beverly Wilshire, A Four Seasons Hotel

9500 Wilshire Boulevard

8.2 MILES

ROOM 1 KING

\$365.00 / \$365.00  
single/double

*100% Non-Smoking Hotel  
Two persons maximum per room.  
No two bedded rooms.*

No triples/quads



Hotel # 21

### Four Seasons Beverly Hills

300 South Doheny Drive

10 MILES

ROOM 1 KING

\$365.00 / \$405.00  
single/double

*100% Non-Smoking Hotel  
Two persons maximum per room.  
No two bedded rooms.*

No triples/quads



Hotel # 22

### The Garland

4222 North Vineland Avenue

11.77 MILES

ROOM 1 KING

\$199.00 / \$199.00  
single/double

*100% Non-Smoking Hotel*

+\$20, triple  
No quads



Hotel # 23

### Hilton Garden Inn Hollywood

2005 N. Highland Drive

8.0 MILES

ROOM

\$239.00 / \$239.00  
single/double

*100% Non-Smoking Hotel*

+\$10 each,  
triple/quad



entertainment  
software  
association



# INSPIRING NEW WORLDS

JUNE 14-16, 2016 | LOS ANGELES

Produced By  
IDG  
WORLD EXPO



Hotel # 24

**Loews Hollywood**  
1755 North Highland Avenue  
*100% Non-Smoking Hotel*

7.8 MILES

ROOM

\$249.00 / \$249.00  
single/double  
+\$20 each,  
triple/quad



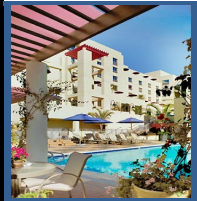
Hotel # 25

**Sheraton Universal Hotel**  
333 Universal Hollywood Drive  
*100% Non-Smoking Hotel*

11.0 MILES

ROOM 1 KING

\$245.00 / \$245.00  
single/double  
No triple/quad



Hotel # 26

**JW Marriott Santa Monica  
Le Merigot**  
1740 Ocean Avenue  
*100% Non-Smoking Hotel*  
*Rooms with two beds are limited;  
based on availability at check-in.*

14.5 MILES

ROOM 1 KING

\$314.00 / \$314.00  
single/double  
No triple/quad



Hotel # 27

**Le Meridien Delfina Santa Monica**  
530 Pico Boulevard  
*100% Non-Smoking Hotel*

14 MILES

ROOM

\$299.00 / \$299.00  
single/double  
+\$25 each,  
triple/quad



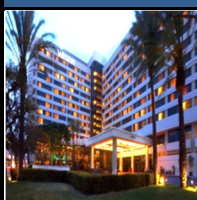
Hotel # 28

**Loews Santa Monica**  
1700 Ocean Avenue  
*100% Non-Smoking Hotel*

14.5 MILES

ROOM

\$318.00 / \$318.00  
single/double  
+\$30 each,  
triple/quad



Hotel # 29

**Westin Los Angeles Airport**  
5400 West Century Boulevard  
*100% Non-Smoking Hotel*

13 MILES

ROOM

\$289.00 / \$289.00  
single/double  
+\$15 each,  
triple/quad



# INSPIRING NEW WORLDS

Produced By  
IDG  
WORLD EXPO

JUNE 14-16, 2016 | LOS ANGELES



Hotel # 30

**Sheraton Gateway**  
6101 West Century Blvd  
*100% Non-Smoking Hotel*

13 MILES

ROOM

\$269.00 / \$269.00  
single/double  
+\$20 each,  
triple/quad



Hotel # 31

**Concourse LAX – A Hyatt affiliate**  
6225 West Century Boulevard  
*100% Non-Smoking Hotel*

13 MILES

ROOM

\$249.00 / \$249.00  
single/double  
+\$25 each,  
triple/quad