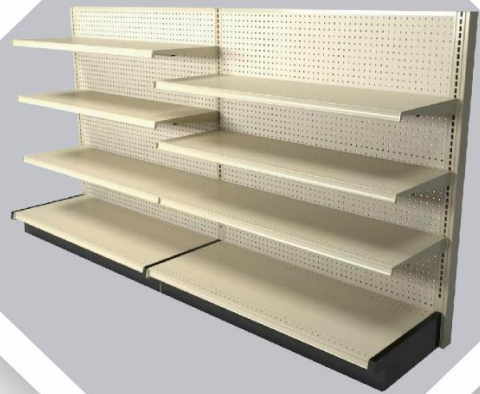
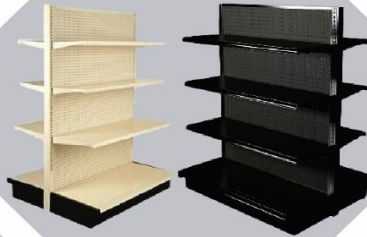




**GLOBAL**  
Merchandising, Inc.

**EXCLUSIVE  
LOZIER  
PROVIDER**



*True Value* 2022 True Value  
Fall Reunion

Global Merchandising, Inc. is proud to be the **exclusive provider** for Lozier fixture rentals at the upcoming **True Value Fall Reunion**.

We offer a **wide variety of fixtures** tailored to fit your show needs. We can special order, produce, or fabricate any items you need to **make your show a success**.

We look forward to working with you and seeing you in Denver.

**Josh Odom - Global Merchandising, Inc.**

24507 US Hwy 231, Sylacauga, AL, 35151  
Cell: 205-515-7511 Fax: 256-369-2979  
TV@globalmerchandisinginc.com





**GLOBAL**  
Merchandising, Inc.

**2022 Fall Reunion**  
**Denver, Colorado**  
**September 16-18, 2022**  
**Terms and Conditions of Rental**



Vendor Name: \_\_\_\_\_ Booth: \_\_\_\_\_

Sales Agent: \_\_\_\_\_ Agency Name: \_\_\_\_\_

Phone: \_\_\_\_\_ Fax: \_\_\_\_\_

Email: \_\_\_\_\_

Sales Representative's Address: \_\_\_\_\_

City, State, Zip: \_\_\_\_\_

On-Site Contact: \_\_\_\_\_

Cell Phone No: \_\_\_\_\_

I hereby agree and acknowledge to all terms and condition agreements listed below.

\_\_\_\_\_  
Print Name

\_\_\_\_\_  
Signature

\_\_\_\_\_  
Date

**All orders for fixture rentals and full payment must be received by**  
**5:00 PM CST on Friday, Aug 26 , 2022**

Orders received after the time listed above will be subject to the on-site rental price.

Any cancellations made before Aug 26, 2022 will receive a 50% credit of the total invoice.

Cancellations made after that time will not receive any credit.

We will not issue credits for unused fixtures at the show.

All rented item(s) should be left in the booth at the conclusion of the show.

Please do not leave displays on the fixtures. (This could result in a labor charge to the vendor for us to remove the display from the fixture).

Please do not, under any circumstances, stick labels or stickers to the peg board or shelves.

Please contact GMI for an alternate solution. If damage occurs to the rented item(s), the vendor will receive a charge to cover the full replacement value of the item(s).

Please return ALL forms to:

Josh Odom

Global Merchandising, Inc.

24507 US HWY 231, Sylacauga, AL 35151

Fax: 256-369-2979 Cell: 205-515-7511

[TV@globalmerchandisinginc.com](mailto:TV@globalmerchandisinginc.com)



**GLOBAL**  
Merchandising, Inc.

**2022 Fall Reunion**  
Denver, Colorado  
September 16-18, 2022  
2' Rental Items



| HxWxBASE  | Pre-order  | On-site    | Color          | QTY   | Total |
|---|------------|------------|----------------|-------|-------|
| <b>Wall Unit (This unit is single sided)</b>                              |            |            |                |       |       |
| 5x2 Wall 16" Base   | \$480 Each | \$590 Each | Black/Platinum | _____ | _____ |
| 6x2 Wall 16" Base   | \$490 Each | \$600 Each | Black/Platinum | _____ | _____ |
| 7x2 Wall 16" Base   | \$500 Each | \$610 Each | Black/Platinum | _____ | _____ |
| <b>Island Unit (This unit is double sided)</b>                            |            |            |                |       |       |
| 5x2 Island 16" Base   | \$580 Each | \$690 Each | Black/Platinum | _____ | _____ |
| 6x2 Island 16" Base   | \$590 Each | \$700 Each | Black/Platinum | _____ | _____ |
| 7x2 Island 16" Base   | \$600 Each | \$710 Each | Black/Platinum | _____ | _____ |
| <b>End Cap Unit (This unit is single sided, but finished on the back)</b> |            |            |                |       |       |
| 5x2 End Cap 16" Base  | \$560 Each | \$670 Each | Black/Platinum | _____ | _____ |
| 6x2 End Cap 16" Base  | \$570 Each | \$680 Each | Black/Platinum | _____ | _____ |
| 7x2 End Cap 16" Base  | \$580 Each | \$690 Each | Black/Platinum | _____ | _____ |
| <b>Accessories (All the accessories below fit items on this page)</b>     |            |            |                |       |       |
| 2'x16" Shelf  | \$30 Each  | \$40 Each  | Black/Platinum | _____ | _____ |
| 2' Wire Front   | \$7 Each   | \$12 Each  | Chrome         | _____ | _____ |
| 16" Divider   | \$4 Each   | \$7 Each   | Chrome         | _____ | _____ |
| 1' Upright Extension  | \$45 Each  | \$90 Each  | Black/Platinum | _____ | _____ |
| 2' Upright Extension  | \$60 Each  | \$120 Each | Black/Platinum | _____ | _____ |
| 3' Upright Extension  | \$75 Each  | \$150 Each | Black/Platinum | _____ | _____ |
| 4' Upright Extension  | \$90 Each  | \$180 Each | Black/Platinum | _____ | _____ |
| 6" Scanner Hook /50   | \$75 Box   | \$125 Box  | Black/Chrome   | _____ | _____ |

Please return ALL forms to:  
Josh Odom  
Global Merchandising, Inc.  
24507 US HWY 231, Sylacauga, AL 35151  
Fax: 256-369-2979 Cell: 205-515-7511  
[TV@globalmerchandisinginc.com](mailto:TV@globalmerchandisinginc.com)



**2022 Fall Reunion**  
**Denver, Colorado**  
**September 16-18, 2022**  
**3' Rental Items**



| <b>HxWxBASE</b>   | <b>Pre-order</b> | <b>On-site</b> | <b>Color</b>   | <b>QTY</b> | <b>Total</b> |
|---|------------------|----------------|----------------|------------|--------------|
| <b>Wall Unit (This unit is single sided)</b>                              |                  |                |                |            |              |
| 5x3 Wall 16" Base   | \$500 Each       | \$610 Each     | Black/Platinum | _____      | _____        |
| 6x3 Wall 16" Base   | \$510 Each       | \$620 Each     | Black/Platinum | _____      | _____        |
| 7x3 Wall 16" Base   | \$520 Each       | \$630 Each     | Black/Platinum | _____      | _____        |
| <b>Island Unit (This unit is double sided)</b>                            |                  |                |                |            |              |
| 5x3 Island 16" Base   | \$600 Each       | \$710 Each     | Black/Platinum | _____      | _____        |
| 6x3 Island 16" Base   | \$610 Each       | \$720 Each     | Black/Platinum | _____      | _____        |
| 7x3 Island 16" Base   | \$620 Each       | \$730 Each     | Black/Platinum | _____      | _____        |
| <b>End Cap Unit (This unit is single sided, but finished on the back)</b> |                  |                |                |            |              |
| 5x3 End Cap 16" Base  | \$570 Each       | \$680 Each     | Black/Platinum | _____      | _____        |
| 6x3 End Cap 16" Base  | \$580 Each       | \$690 Each     | Black/Platinum | _____      | _____        |
| 7x3 End Cap 16" Base  | \$590 Each       | \$700 Each     | Black/Platinum | _____      | _____        |
| <b>Accessories (All the accessories below fit items on this page)</b>     |                  |                |                |            |              |
| 3'x16" Shelf  | \$30 Each        | \$40 Each      | Black/Platinum | _____      | _____        |
| 3' Wire Front   | \$7 Each         | \$12 Each      | Chrome         | _____      | _____        |
| 16" Divider   | \$4 Each         | \$7 Each       | Chrome         | _____      | _____        |
| 1' Upright Extension  | \$45 Each        | \$90 Each      | Black/Platinum | _____      | _____        |
| 2' Upright Extension  | \$60 Each        | \$120 Each     | Black/Platinum | _____      | _____        |
| 3' Upright Extension  | \$75 Each        | \$150 Each     | Black/Platinum | _____      | _____        |
| 4' Upright Extension  | \$90 Each        | \$180 Each     | Black/Platinum | _____      | _____        |
| 6" Scanner Hook /50   | \$75 Box         | \$125 Box      | Black/Chrome   | _____      | _____        |

Please return ALL forms to:  
 Josh Odom  
 Global Merchandising, Inc.  
 24507 US HWY 231, Sylacauga, AL 35151  
 Fax: 256-369-2979 Cell: 205-515-7511  
[TV@globalmerchandisinginc.com](mailto:TV@globalmerchandisinginc.com)



**2022 Fall Reunion**  
**Denver, Colorado**  
**September 16-18, 2022**  
**4' Rental Items**



| HxWxBASE                                       | Pre-order  | On-site    | Color          | QTY   | Total |
|--|------------|------------|----------------|-------|-------|
| <b>Wall Unit (This unit is single sided)</b>   |            |            |                |       |       |
| 5x4 Wall 16" Base                              | \$530 Each | \$640 Each | Black/Platinum | _____ | _____ |
| 5x4 Wall 19" Base                              | \$640 Each | \$650 Each | Black/Platinum | _____ | _____ |
| 5x4 Wall 22" Base                              | \$550 Each | \$660 Each | Black/Platinum | _____ | _____ |
| 6x4 Wall 16" Base                              | \$540 Each | \$650 Each | Black/Platinum | _____ | _____ |
| 6x4 Wall 19" Base                              | \$550 Each | \$660 Each | Black/Platinum | _____ | _____ |
| 6x4 Wall 22" Base                              | \$560 Each | \$670 Each | Black/Platinum | _____ | _____ |
| 7x4 Wall 16" Base <i>Standard Size</i>         | \$550 Each | \$660 Each | Black/Platinum | _____ | _____ |
| 7x4 Wall 19" Base                              | \$560 Each | \$670 Each | Black/Platinum | _____ | _____ |
| 7x4 Wall 22" Base                              | \$570 Each | \$680 Each | Black/Platinum | _____ | _____ |
| <b>Island Unit (This unit is double sided)</b> |            |            |                |       |       |
| 5x4 Island 16" Base                            | \$630 Each | \$740 Each | Black/Platinum | _____ | _____ |
| 5x4 Island 19" Base                            | \$640 Each | \$750 Each | Black/Platinum | _____ | _____ |
| 5x4 Island 22" Base                            | \$650 Each | \$760 Each | Black/Platinum | _____ | _____ |
| 6x4 Island 16" Base                            | \$640 Each | \$750 Each | Black/Platinum | _____ | _____ |
| 6x4 Island 19" Base                            | \$650 Each | \$760 Each | Black/Platinum | _____ | _____ |
| 6x4 Island 22" Base                            | \$660 Each | \$770 Each | Black/Platinum | _____ | _____ |
| 7x4 Island 16" Base                            | \$650 Each | \$760 Each | Black/Platinum | _____ | _____ |
| 7x4 Island 19" Base                            | \$660 Each | \$770 Each | Black/Platinum | _____ | _____ |
| 7x4 Island 22" Base                            | \$670 Each | \$780 Each | Black/Platinum | _____ | _____ |

Please return ALL forms to:  
 Josh Odom  
 Global Merchandising, Inc.  
 24507 US HWY 231, Sylacauga, AL 35151  
 Fax: 256-369-2979 Cell: 205-515-7511  
[TV@globalmerchandisinginc.com](mailto:TV@globalmerchandisinginc.com)



**2022 Fall Reunion  
Denver, Colorado  
September 16-18, 2022  
4' Rental Items Continued**



| HxWxBASE  | Pre-order  | On-site    | Color          | QTY   | Total |
|---|------------|------------|----------------|-------|-------|
| <b>End Cap Unit (This unit is single sided, but finished on the back)</b> |            |            |                |       |       |
| 5x4 End Cap 16" Base  | \$600 Each | \$710 Each | Black/Platinum | _____ | _____ |
| 5x4 End Cap 19" Base  | \$610 Each | \$720 Each | Black/Platinum | _____ | _____ |
| 5x4 End Cap 22" Base  | \$620 Each | \$730 Each | Black/Platinum | _____ | _____ |
| 6x4 End Cap 16" Base  | \$610 Each | \$720 Each | Black/Platinum | _____ | _____ |
| 6x4 End Cap 19" Base  | \$620 Each | \$730 Each | Black/Platinum | _____ | _____ |
| 6x4 End Cap 22" Base  | \$630 Each | \$740 Each | Black/Platinum | _____ | _____ |
| 7x4 End Cap 16" Base  | \$620 Each | \$730 Each | Black/Platinum | _____ | _____ |
| 7x4 End Cap 19" Base  | \$630 Each | \$740 Each | Black/Platinum | _____ | _____ |
| 7x4 End Cap 22" Base  | \$640 Each | \$750 Each | Black/Platinum | _____ | _____ |
| <b>Accessories (All the accessories below fit items on this page)</b>     |            |            |                |       |       |
| 4'x16" Shelf <i>Standard Size</i>   | \$30 Each  | \$40 Each  | Black/Platinum | _____ | _____ |
| 4'x19" Shelf  | \$35 Each  | \$45 Each  | Black/Platinum | _____ | _____ |
| 4'x22" Shelf  | \$40 Each  | \$50 Each  | Black/Platinum | _____ | _____ |
| 4' Wire Front   | \$7 Each   | \$12 Each  | Chrome         | _____ | _____ |
| 16" Divider   | \$4 Each   | \$7 Each   | Chrome         | _____ | _____ |
| 1' Upright Extension  | \$45 Each  | \$90 Each  | Black/Platinum | _____ | _____ |
| 2' Upright Extension  | \$60 Each  | \$120 Each | Black/Platinum | _____ | _____ |
| 3' Upright Extension  | \$75 Each  | \$150 Each | Black/Platinum | _____ | _____ |
| 4' Upright Extension  | \$90 Each  | \$180 Each | Black/Platinum | _____ | _____ |
| 6" Scanner Hook /50   | \$75 Box   | \$125 Box  | Black/Chrome   | _____ | _____ |

Please return ALL forms to:  
Josh Odom  
Global Merchandising, Inc.  
24507 US HWY 231, Sylacauga, AL 35151  
Fax: 256-369-2979 Cell: 205-515-7511  
[TV@globalmerchandisinginc.com](mailto:TV@globalmerchandisinginc.com)





**GLOBAL**  
Merchandising, Inc.

**2022 Fall Reunion  
Denver, Colorado  
September 16-18, 2022  
Credit Card Authorization**



Company Name: \_\_\_\_\_ Booth #: \_\_\_\_\_

Sales Agent: \_\_\_\_\_ Phone : \_\_\_\_\_

Billing Address: \_\_\_\_\_

On-Site Conact: \_\_\_\_\_ Cell Phone No: \_\_\_\_\_

**Payment Authorization**

Card Type: \_\_\_ Visa \_\_\_ MasterCard \_\_\_ Discover \_\_\_ Amex

Card Number: \_\_\_\_\_ Exp Date: \_\_\_\_/\_\_\_\_

Card Identification Number: \_\_\_\_\_ (Visa/MasterCard: 3 digits on the back, Amex: 4 digits on the front)  
A 3% administration fee will be added to all invoices.

**Purchase Information**

Total Order: \_\_\_\_\_

3% Administration Fee: \_\_\_\_\_

Total Charge to Credit Card: \_\_\_\_\_

**Confirmation and Receipt**

Email address for order confirmation and receipt:

---

Email

Please return ALL forms to:  
Josh Odom  
Global Merchandising, Inc.  
24507 US HWY 231, Sylacauga, AL 35151  
Fax: 256-369-2979 Cell: 205-515-7511  
[TV@globalmerchandisinginc.com](mailto:TV@globalmerchandisinginc.com)