

## BEAUTY + GIFT BOOTH PACKAGE DÉCOR RULES

### Description: A 10' X 10' Standard Gift package includes:

- (1) White Table – 30”H x 42”W x 30”D
- (2) Clear Wendy Chairs – 35.8”H x 15”W x 19.7”D
- (4) Alex Display Cubes – 23”H x 23”W x 36”D
- (1) Wastebasket – 15”H x 14”W x 9”D
- (1) Floor Decal ID Sign
- In-House Retail Level Lighting
- (1) 500w electrical outlet per booth

As booth size increases, booth packages items/content are multiplied accordingly.

All fixtures, furniture, display, and decorative elements must remain within the booth line and may not extend into the aisles.

**NO CUSTOM BOOTHS:** Booth Package exhibitors may not build out or bring a custom booth, custom walls, custom flooring, or custom accessories.

**HEIGHT LIMIT:** Nothing may extend above 6' from the floor including product, décor, display items, accessories, furniture, truss, lighting, A/V equipment or signage. Hanging anything above the booth is prohibited.

**GRAPHICS & SIGNAGE:** No additional graphics or signage allowed without approval from Show Management.

**ATTACHED ITEMS:** Exhibitors may not affix, apply, hang, or attach any item (including, but not limited to, binder clips, S-hooks, lighting, flyers, banners, signage, stickers, decals, tape, adhesives, nails, hooks, screws, tacks, or Velcro) on/to any booth package element provided by Show Management including the fixtures/furniture, floor, columns, or other parts of the Exhibit Facility. Any damage due to unapproved materials, clips, sticker, etc. will be charged to the exhibitor for full replacement costs.

**LIGHTING:** No additional lighting or neon is needed or allowed.

**MUSIC, SOUND, & AUDIO/VISUAL:** Show Management provides music for the show. Music, sound amplifying devices & A/V equipment, other than those provided by Show Management, are prohibited.

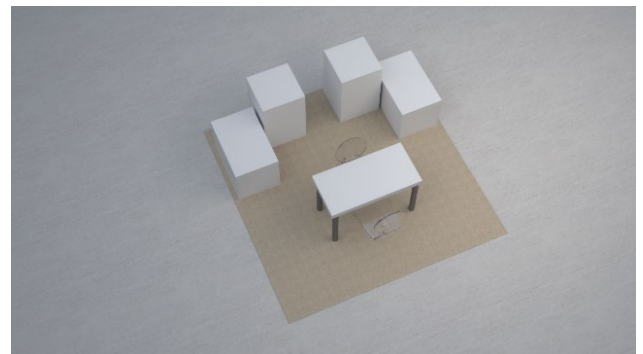
**MODELS:** Not permitted.

**MANNEQUINS:** Not permitted.

**CURTAINS & DRAPE:** Not permitted.

**FLORAL & SMALL PROPS:** Permitted.

**ADDITIONAL BRAND(S) IN BOOTH:** No Exhibitor shall assign, sublet, or share any part of its assigned space without the written consent of Show Management. Any Exhibitor who wishes to display additional brand(s) in its booth must submit the additional brand(s) to Show Management for approval. Upon Show Management's written approval Exhibitor will be required to pay an additional fee per brand. If unapproved brands are found in Exhibitor's booth, the booth will be closed and all monies paid by exhibitor will be forfeited.



*Renderings for illustrative purposes only.  
Slight variances may occur.*