

FEBRUARY 13-15, 2023  
LAS VEGAS CONVENTION CENTER

## PROJECT NOW BOOTH PACKAGE DÉCOR RULES

### Description: A Standard 10' X 10' package includes:

- (1) Merlin Table – 30”H x 46”W x 29”D
- (3) Rustique Chairs – 31”H x 20”W x 18”D
- (3) Accessories
  - Apparel: Bronze Garment Rack (5’H x 6’L)
  - Accessories/Footwear: Bronze EZ Shelf (54”H x 54”W x 11 ¾”D)
- No walls
- (1) Wastebasket – 15”H x 14”W x 9”D
- (1) ID Sign with Stand
- In-House Retail Level Lighting
- (1) 500w electrical outlet per booth

As booth size increases, booth packages items/content are multiplied accordingly.

All fixtures, furniture, display, and decorative elements must remain within the booth line and may not extend into the aisles.

**NO CUSTOM BOOTHS:** PROJECT NOW exhibitors may not build out or bring a custom booth, custom walls, custom flooring, or custom accessories.

**HEIGHT LIMIT:** Nothing may extend above 6’ from the floor including product, décor, display items, accessories, furniture, truss, lighting, A/V equipment or signage. Hanging anything above the booth is prohibited.

**BOOTH DÉCOR APPROVAL:** If an exhibitor wishes to bring in any décor elements, furniture, or accessories other than what is offered in the package, they must obtain pre-approval in writing from their account executive. Photos of the items, materials used, sizes, and any important features of the item are required. Examples of items that must be approved by Show Management are floral, props, lighting, rugs, custom accessories, or furniture, etc.

**Please send your submissions to your account manager by January 13<sup>th</sup>, 2023.**

**FIXTURE ORDER DEADLINE:** You will receive a default booth package – Apparel brands will receive 3 racks and Accessories/Footwear brands will receive 3 shelves. If you would not like the default fixtures + furniture, or would like a combination of fixtures, please inform your account manager by January 26<sup>th</sup>. **\*On-site fixture changes will be charged \$83.00 per piece.**

**BUST FORMS & MANNEQUINS:** Pre-approved bust forms can be ordered through D&B Rental Displays via the link located in the exhibitor kit. If you would like to use bust forms other than these, you must submit your request in writing along with photos. Please note, bust forms are the only display mannequins permitted in the PROJECT NOW area.

The following will not be approved under any circumstances:

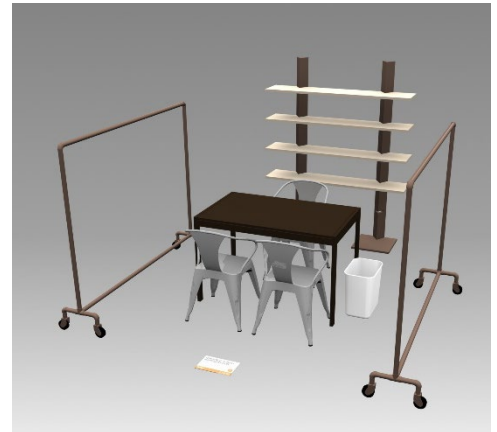
1. No head(s) on mannequins – must be headless.
2. Only matte finished skin-tone are approved; no neon, glossy, chrome, pop-colors, etc.
3. Headless mannequins cannot extend above 6’ tall, including accessories or fixtures.
4. No mannequins on base or podium.
5. Any mannequin(s) that were not approved will be removed by GES and stored at exhibitor’s expense.

**PROHIBITED BOOTH DECOR ITEMS:** These items are prohibited and will NOT be approved by show management. This will be enforced on show site. **Any unapproved banners, signs, pop-up (retractable) signs will be removed and stored at exhibitor’s expense.**

- Large banners & signs, pop-up (retractable) signs
- Neon or additional lighting
- Curtains and/or drape

**MUSIC, SOUND, & AUDIO/VISUAL:** Show Management provides music for the show. Music, sound amplifying devices & A/V equipment, other than those provided by Show Management, are prohibited. If an exhibitor has computers, iPads, or any other A/V equipment, sound must be turned OFF.

**ADDITIONAL BRAND(S) IN BOOTH:** No Exhibitor shall assign, sublet, or share any part of its assigned space without the written consent of Show Management. Any Exhibitor who wishes to display additional brand(s) in its booth must submit the additional brand(s) to Show Management for approval. Upon Show Management’s written approval Exhibitor will be required to pay an additional fee per brand. If unapproved brands are found in Exhibitor’s booth, the booth will be closed and all monies paid by exhibitor will be forfeited.



*Rendering is for illustrative purposes only. Slight variances may occur.*