

## **Guidelines for Display Rules and Regulations**

The following *Guidelines for Display Rules and Regulations* have been established by the International Association of Exhibitions and Events™ (IAEE). Guidelines for Display Rules and Regulations are created to promote continuity and consistency among North American exhibitions.

These guidelines afford exhibitors a maximum return on their exhibit investments. Compliance with fire, safety, American with Disabilities Act (ADA), and other state, federal or provincial government requirements has also been addressed. However, always check with a local exhibition service contractor and the facility for local regulations (included in your exhibit manual).

It is our goal that the display rules and regulations, ultimately developed by each exhibition and event organizer, shall provide exhibitors with all the information necessary to properly design and build exhibits, as well as plan their booth's layout and content. CinemaCon would like to present the professional standards expected of exhibitors and assure all exhibitors, regardless of exhibit size or location, an environment conducive to successful interaction with their audiences.

IAEE is a global association that serves as the foremost authority on exhibition management and operations.

***\*\*Based on your booth location, ceiling height is as follows: Augustus – 20' / Forum – 22' / Milano – 16' / Neopolitan – 16'***

***Any deviation from the rules and regulations listed below will require prior written approval from CinemaCon management.***

## Linear Booth

A Linear Booth, also called “in-line” booths, are generally arranged in a straight line and have neighboring exhibitors on their immediate right and left, leaving only on side exposed to the aisle.

### **Dimensions and Use of Space**

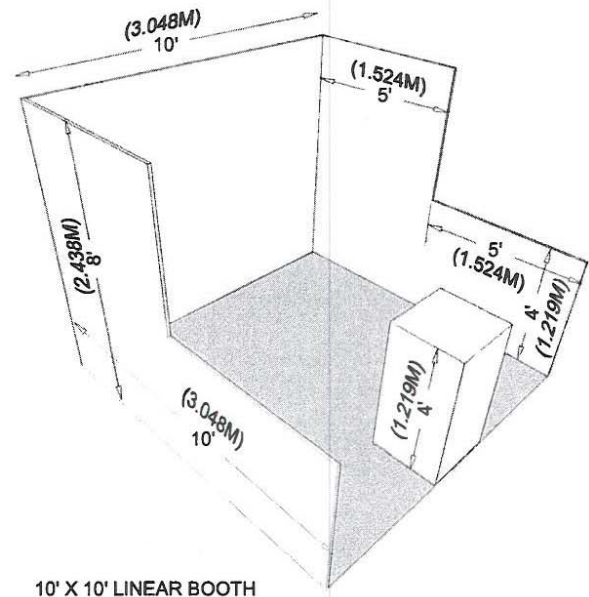
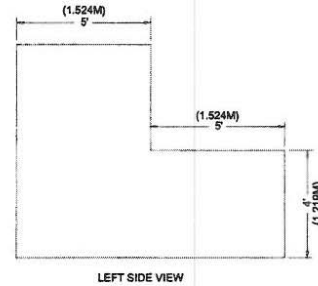
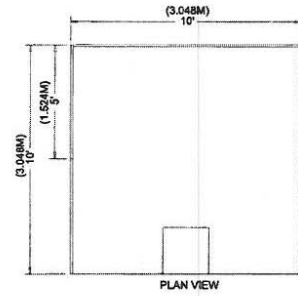
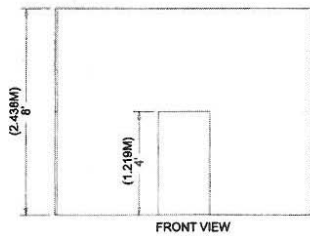
For purposes of consistency and ease of layout and / or reconfiguration, floor plan design in increments of 10ft. (3.05m) has become the de facto standard in the United States. Therefore, unless constricted by space or other limitations, Linear Booths are most commonly 10ft. (3.05m) wide and 10ft. (3.05m) deep, i.e. 10ft. by 10ft. (3.5m by 3.05m). A maximum back wall height limitation of 8ft. (2.44m) is generally specified.

### **Use of Space**

Regardless of the number of Linear Booths utilized, e.g. 10ft. by 20ft. (3.05m by 6.10m), 10ft. by 30ft. (3.05m by 9.14m) etc. display materials should be arranged in such a manner so as not to obstruct sight lines of neighboring exhibitors. The maximum height of 8ft. (2.44m) is allowed only in the rear half of the booth space, with a 4ft. (1.22m) height restriction imposed on all materials in the remaining space forward to the aisle. (See Line –of-Sight exception on page 8). Note: When three or more Linear Booths are used in combination as a single exhibit space, the 4ft. (1.22m) height limitation is applied only to that portion of exhibit space which is within 10ft. (3.05m) of an adjoining booth.

## Corner Booth

A Corner Booth is a Linear Booth at the end of a series of in-line booths with exposure to intersecting aisle on two sides. All other guidelines for Linear Booths apply.



10' X 10' LINEAR BOOTH

© 2011 IAEE. No cost to members in good standing for including these guidelines in exhibitor service kits and/or in their event's rules and regulations at [www.tradeshowstore.com](http://www.tradeshowstore.com) – non member rates apply.

**\*\*Based on your booth location, ceiling height is as follows: Augustus – 20' / Forum – 22' / Milano – 16' / Neopolitan – 16'**

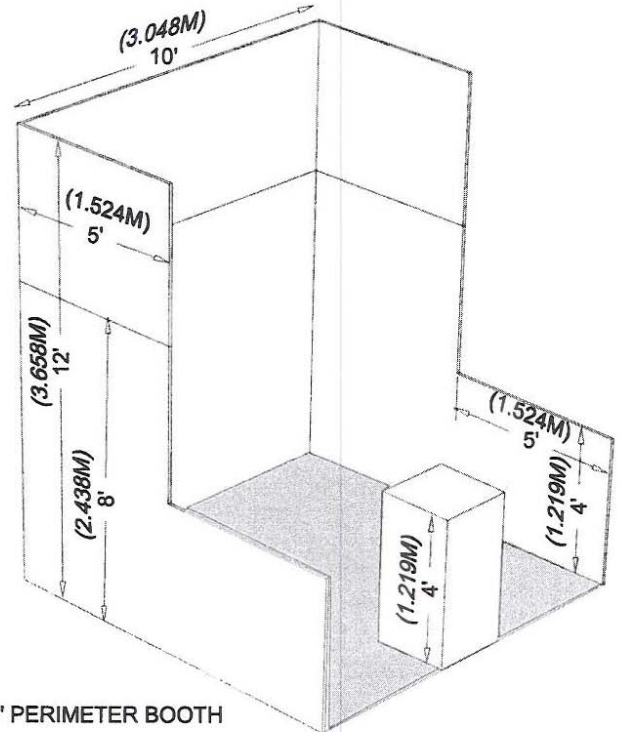
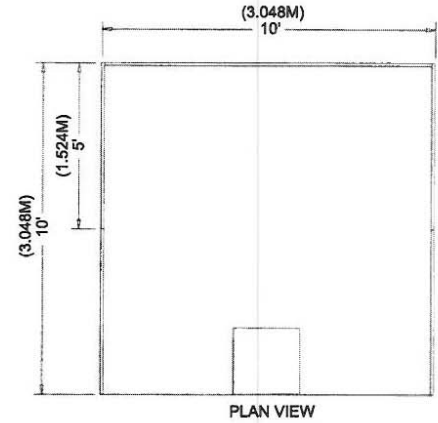
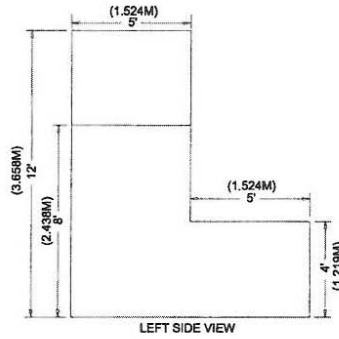
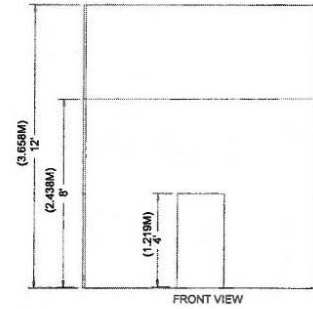
**Any deviation from the rules and regulations listed below will require prior written approval from CinemaCon management.**

## Perimeter Booth

A perimeter Booth is a Linear Booth that backs to an outside wall of the exhibit facility rather than to another exhibit.

### **Dimensions and Use of Space**

All guidelines for Linear Booths apply to Perimeter Booths except that the maximum back wall height is 16ft. (4.88m).



© 2011 IAEE. No cost to members in good standing for including these guidelines in exhibitor service kits and/or in their event's rules and regulations at [www.tradeshowstore.com](http://www.tradeshowstore.com) – non member rates apply.

**\*\*Based on your booth location, ceiling height is as follows: Augustus – 20' / Forum – 22' / Milano – 16' / Neopolitan – 16'**

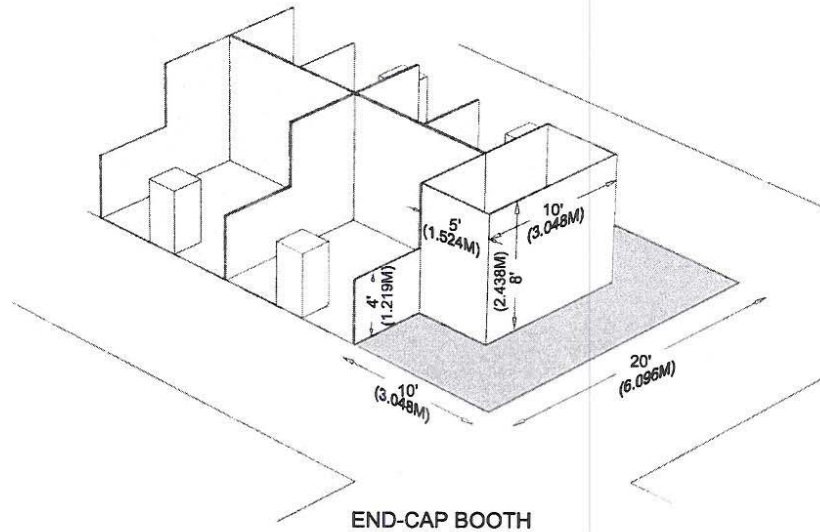
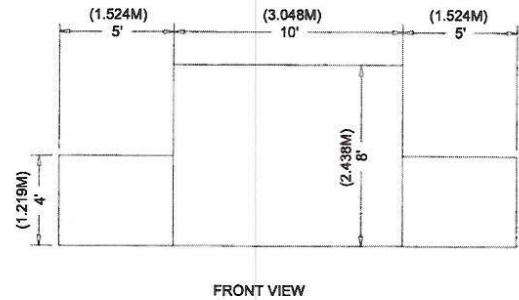
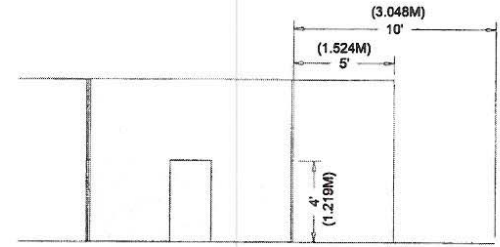
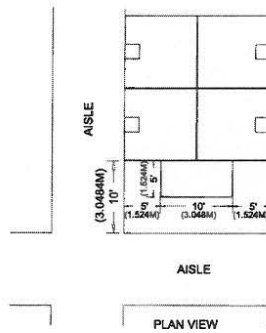
**Any deviation from the rules and regulations listed below will require prior written approval from CinemaCon management.**

## End-Cap Booth

An End-Cap Booth is exposed to aisles on three (3) sides and comprised of two (2) booths..

### Dimensions and Use of Space

End-Cap Booths are generally 10ft. (3.05m) deep by 20ft. (6.10m) wide. The maximum back wall height of 8ft. (2.44m) is allowed only in the rear half of the booth space and within 5ft. (1.52m) of the two side aisles, with a 4ft. (1.22m) height restriction imposed on all materials in the remaining space forward to the aisle. An End-Cap Booth that shares a common back wall with a Peninsula Booth is permitted a maximum booth height of 16ft. (4.88m) and in its build may use the entire width of the back wall flush to the two side aisles.



© 2011 IAEE. No cost to members in good standing for including these guidelines in exhibitor service kits and/or in their event's rules and regulations at [www.tradeshowstore.com](http://www.tradeshowstore.com) – non member rates apply.

**\*\*Based on your booth location, ceiling height is as follows: Augustus – 20' / Forum – 22' / Milano – 16' / Neopolitan – 16'**

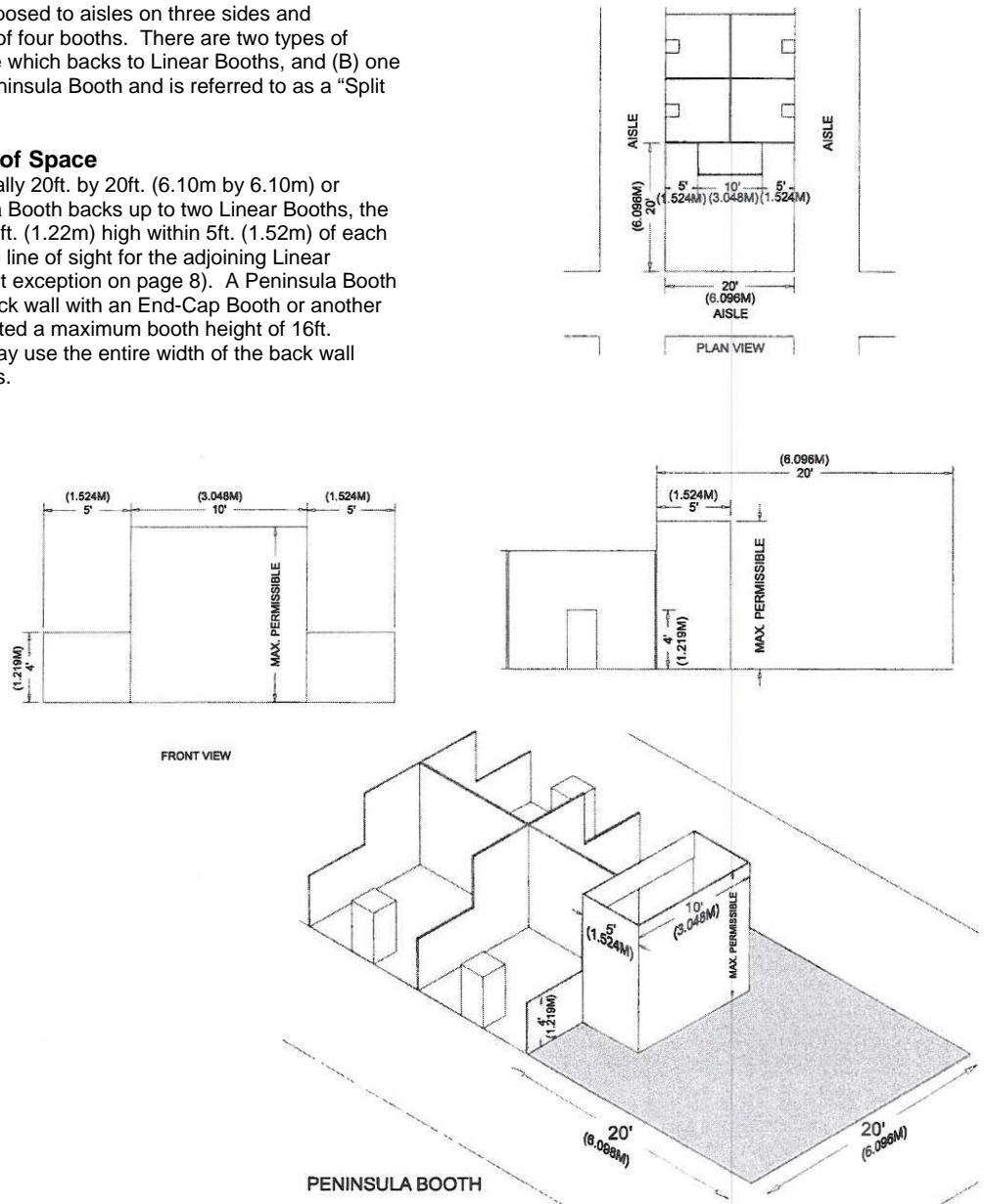
**Any deviation from the rules and regulations listed below will require prior written approval from CinemaCon management.**

## Peninsula Booth

An Peninsula Booth is exposed to aisles on three sides and comprised of a minimum of four booths. There are two types of peninsula Booths: (A) one which backs to Linear Booths, and (B) one which back to another Peninsula Booth and is referred to as a "Split Island Booth."

### Dimensions and Use of Space

A Peninsula Booth is usually 20ft. by 20ft. (6.10m by 6.10m) or larger. When a Peninsula Booth backs up to two Linear Booths, the back wall is restricted to 4ft. (1.22m) high within 5ft. (1.52m) of each aisle, permitting adequate line of sight for the adjoining Linear Booths. (See Line-of-Sight exception on page 8). A Peninsula Booth that shares a common back wall with an End-Cap Booth or another Peninsula Booth is permitted a maximum booth height of 16ft. (4.88m) and in its build may use the entire width of the back wall flush to the two side aisles.



© 2011 IAEE. No cost to members in good standing for including these guidelines in exhibitor service kits and/or in their event's rules and regulations at [www.tradeshowstore.com](http://www.tradeshowstore.com) – non member rates apply.

**\*\*Based on your booth location, ceiling height is as follows: Augustus – 20' / Forum – 22' / Milano – 16' / Neopolitan – 16'**

**Any deviation from the rules and regulations listed below will require prior written approval from CinemaCon management.**

## **Island Booth**

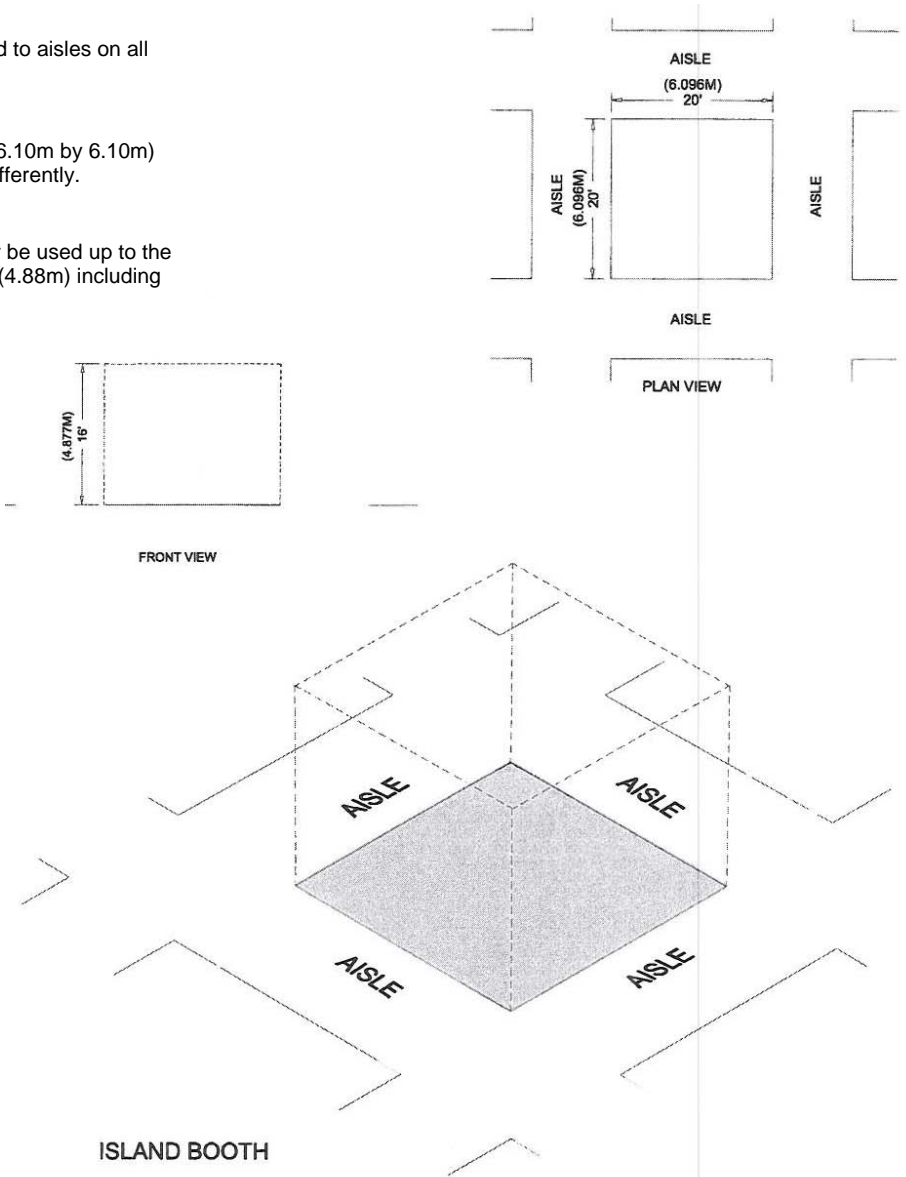
An Island Booth is any size booth exposed to aisles on all four sides.

### **Dimensions and Use of Space**

An Island Booth is typically 20ft. by 20ft. (6.10m by 6.10m) or larger, although it may be configured differently.

### **Use of Space**

The entire cubic content of the space may be used up to the maximum allowable height, which is 16ft. (4.88m) including signage.



© 2011 IAEE. No cost to members in good standing for including these guidelines in exhibitor service kits and/or in their event's rules and regulations at [www.tradeshowstore.com](http://www.tradeshowstore.com) – non member rates apply.

**\*\*Based on your booth location, ceiling height is as follows: Augustus – 20' / Forum – 22' / Milano – 16' / Neopolitan – 16'**

**Any deviation from the rules and regulations listed below will require prior written approval from CinemaCon management.**

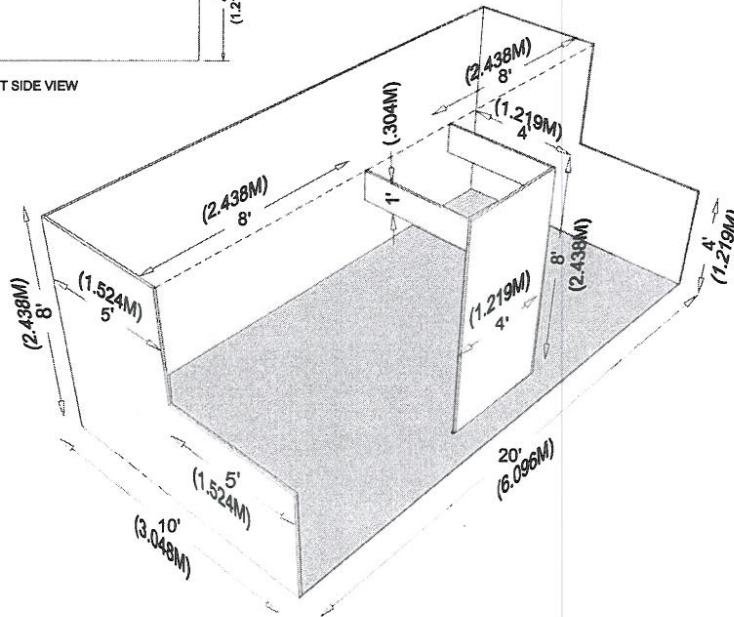
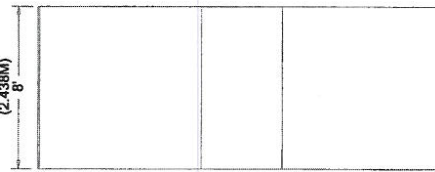
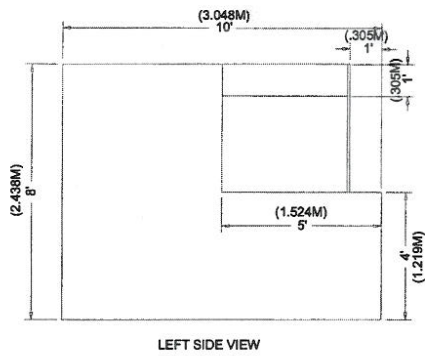
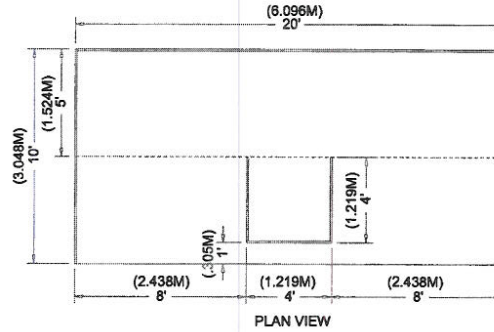


## Extended Header Booth 20ft (6.10m) or Longer

An Extended Header Booth is a Linear Booth 20ft (6.10m) or longer with a center extended header.

### Dimensions and Use of Space

All guidelines for Linear Booths apply to Extended Header Booths, except that the center extended header has a maximum height of 8ft (2.44m), a maximum width of 20 percent of the length of the booth, and a maximum depth of 9ft (2.7m) from the back wall.



© 2011 IAEE. No cost to members in good standing for including these guidelines in exhibitor service kits and/or in their event's rules and regulations at [www.tradeshowstore.com](http://www.tradeshowstore.com) – non member rates apply.

**iliano**

– 16' / Neopolitan – 16'

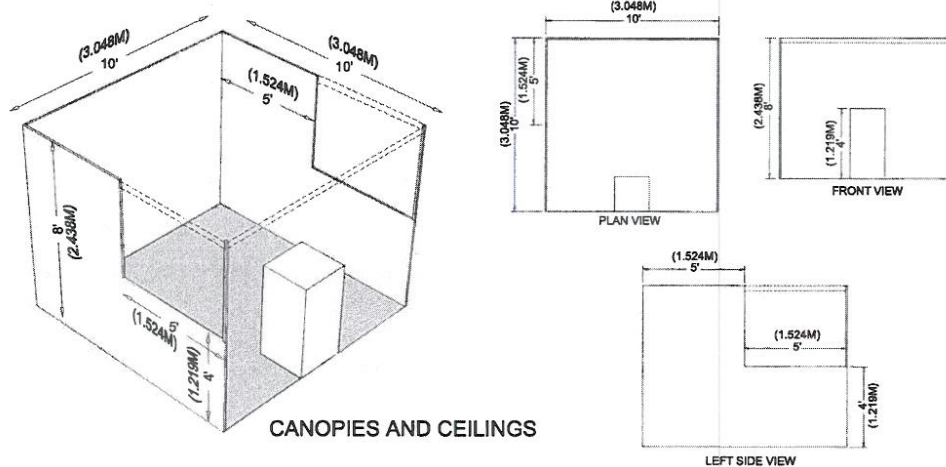
**Any deviation from the rules and regulations listed below will require prior written approval from CinemaCon management.**

## Other Important Considerations

### Canopies and Ceilings

Canopies, including ceilings, umbrellas and canopy frames, can be either decorative or functional (such as to shade computer monitors from ambient light or to allow for hanging products). Canopies for Linear or Perimeter Booths should comply with Line-of-Sight requirements. (See "Use of Space" for Linear or Perimeter Booths).

The bottom of the canopy should not be lower than 7ft (2.13m) from the floor within 5ft (1.52m) of any aisle. Canopy supports should be no wider than three inches 3in (.08m). This applies to any booth configuration that has a sight line restriction, such as a Linear Booth. Fire and safety regulations in many facilities strictly govern the use of canopies, ceilings, and other similar coverings. Check with the appropriate local agencies prior to determining specific exhibition rules.



### Hanging Signs & Graphics

Most exhibition rules allow for hanging signs and graphics in all standard Peninsula and Island Booths, usually to a maximum height range of 16ft to 20ft (4.88m to 6.10m) from the top of the sign. End-cap Booths do not qualify for hanging signs and graphics. The distance is measured from the floor to the top of the sign. Whether suspended from above, or supported from below, they should comply with all ordinary use-of-space requirements. For example, the highest point of any sign should not exceed the maximum allowable height for the booth type.

Hanging Signs and Graphics should be set back 10ft (3.05m) from adjacent booths and be directly over contracted space only.

Approval for the use of Hanging Signs and Graphics, at any height, should be received from the exhibition organizer at least 60 days prior to installation. Variances may be issued at the exhibition management's discretion. Drawings should be available for inspection.

### Towers

A Tower is a free-standing exhibit component separate from the main exhibit fixture. The height restriction is the same as that which applies to the appropriate exhibit space configuration being used.

Towers in excess of 8ft (2.44m) should have drawings available for inspection. Fire and safety regulations in many facilities strictly govern the use of towers. A building permit or safety lines may be required.

### Multi-story Exhibit

A Multi-story Exhibit is a booth where the display fixture includes two or more levels. In many cities, a Multi-storied Exhibit requires prior approval by the exhibit facility, and/or relevant local government agency, as well as show management because it is deemed to be a "structure" for building purposes. The city building department generally needs to issue a building permit based on an application and drawings prepared and submitted by a licensed architect or engineer. Exhibitors should obtain local building regulations early on to ensure that all time constraints are met. Exhibition organizers should be prepared to assist exhibitors in this application process.

© 2011 IAEE. No cost to members in good standing for including these guidelines in exhibitor service kits and/or in their event's rules and regulations at [www.tradeshowstore.com](http://www.tradeshowstore.com) – non member rates apply.

– 16' / Neopolitan – 16'

**Any deviation from the rules and regulations listed below will require prior written approval from CinemaCon management.**



## Issues Common To All Booth Types

### Americans with Disabilities Act (ADA)

All exhibiting companies are required to be in compliance with the Americans with Disabilities Act (ADA), and are encouraged to be sensitive, and as reasonably accommodating as possible, to attendees with disabilities. Information regarding ADA compliance is available from the U.S. Department of Justice ADA Information Line, (800) 514-0301, and from the ADA Web site at [www.usdoj.gov/crt/ada/adahom1.htm](http://www.usdoj.gov/crt/ada/adahom1.htm).

### Structural Integrity

All exhibit displays should be designed and erected in a manner that will withstand normal contact or vibration caused by neighboring exhibitors, hall laborers, or installation/dismantling equipment, such as fork lifts. Displays should also be able to withstand moderate wind effects that may occur in the exhibit hall when freight doors are open. Refer to local building codes that regulate temporary structures.

It is recommended that all 20ft by 20ft (6.10m by 6.10m) and over exhibits require a drawing, plans or renderings, preferably digital, to be submitted to the show organizer.

Exhibitors should ensure that any display fixtures such as tables, racks, or shelves are designed and installed properly to support the product or marketing materials to be displayed.

### Flammable and Toxic Materials

All materials used in display construction or decorating should be made of fire retardant materials and be certified as flame retardant. Samples should also be available for testing. Materials that cannot be treated to meet the requirements should not be used. A flame-proofing certificate should be available for inspection. Exhibitors should be aware of local regulations regarding fire/safety and environment which must be adhered to.

Exhibitors should dispose of any waste products they generate during the exhibition in accordance with guidelines established by the Environmental Protection Agency and the facility.

### Electrical

Every exhibit facility has different electrical requirements. However, minimum guidelines are suggested:

- All 110-volt wiring should be grounded three-wire.
- Wiring that touches the floor should be "SO" cord (minimum 14-gauge/three-wire) flat cord, which is insulated to qualify for "extra hard usage."
- Cord wiring above floor level can be "SJ" which is rated for "hard usage."
- Using zip cords, two-wire cords, latex cords, plastic cord, lamp cord, open clip sockets, and two-wire clamp-on fixtures is not recommended and is often prohibited. Cube taps should be prohibited.
- Power strips (multi-plug connectors) should be UL approved, with built-in over-load protectors.

*(continued on next page)*

## Issues Common To All Booth Types *(continued)*

### Lighting

Exhibitors should adhere to the following suggested minimum guidelines when determining booth lighting:

- No lighting, fixtures, lighting trusses, or overhead lighting are allowed outside the boundaries of the exhibit space. Exhibitors intending to use hanging light systems should submit drawings to exhibition management for approval.
- Lighting, including gobos, should be directed to the inner confines of the booth space. Lighting should not project onto other exhibits or exhibition aisles.
- Lighting which is potentially harmful, such as lasers or ultraviolet lighting, should comply with facility rules and be approved in writing by exhibition management.
- Lighting that spins, rotates, pulsates, and other specialized lighting effects should be in good taste and not interfere with neighboring exhibitors or otherwise detract from the general atmosphere of the event.
- Currently, some convention facilities are not allowing quartz halogen lighting fixtures in exhibits due to potential fire hazards. Check with exhibition management.
- Reduced lighting for theater areas should be approved by the exhibition organizer, the utility provider, and the exhibit facility.

### Storage

Fire regulations in most exhibit facilities prohibit storing product, literature, empty packing containers, or packing materials behind back drapes or under draped tables. In most cases, however, exhibitors may store a limited supply of literature or product appropriately within the booth area, so long as these items do not impede access to utility services, create a safety problem, or look unsightly.

### Demonstrations

As a matter of safety and courtesy to others, exhibitors should conduct sales presentations and product demonstrations in a manner which assures all exhibitor personnel and attendees are within the contracted exhibit space and not encroaching on the aisle or neighboring exhibits. It is the responsibility of each exhibitor to arrange displays, product presentation, audio visual presentations, and demonstration areas to ensure compliance. Exhibitors should be aware of local regulations regarding fire/safety and environment which must be adhered to.

Special caution should be taken when demonstrating machinery or equipment that has moving parts, cooking equipment with an open flame, or any product that is otherwise potentially dangerous. Exhibitors should establish a minimum setback of 3ft (91m) and/or install hazard barriers as necessary to prevent accidental injury to spectators. Additionally, demonstrations should only be conducted by qualified personnel.

### Sound/Music

In general, exhibitors may use sound equipment in their booths so long as the noise level does not disrupt the activities of neighboring exhibitors. Speakers and other sound devices should be positioned so as to direct sound into the booth rather than into the aisle. Rule of thumb: Sound and noise should not exceed 85 decibels when measured from the aisle immediately in front of a booth. (Refer to OSHA at [www.osha.gov](http://www.osha.gov) for more information.)

Exhibitors should be aware that music played in their booths, whether live or recorded, may be subject to laws governing the use of copyrighted compositions. ASCAP, BMI, and SESAC are three authorized licensing organizations that collect copyright fees on behalf of composers and publishers of music.

---

© 2011 IAEE. No cost to members in good standing for including these guidelines in exhibitor service kits and/or in their event's rules and regulations at [www.tradeshowstore.com](http://www.tradeshowstore.com) – non member rates apply.

**\*\*Based on your booth location, ceiling height is as follows: Augustus – 20' / Forum – 22' / Milano – 16' / Neopolitan – 16'**

**Any deviation from the rules and regulations listed below will require prior written approval from CinemaCon management.**