

# SHOW RULES AND REGULATIONS

## COLUMN WRAPPING

### **FOR EXHIBITORS WITH COLUMNS LOCATED WITHIN THEIR CONTRACTED BOOTH SPACE**

Every column has a fire strobe on each of its 4 sides, located APPROXIMATELY 11'6" up. Strobes are 6.5" high, 5" wide and 1.16" deep. **Strobes must remain visible at all times.**

Many columns have a fire hose cabinet and/or fire extinguisher cabinets. Both must remain accessible at all times. If you are planning a covering for a column you must provide access to the fire equipment. Access can either be a hard structure that has a door with a minimum clearance of 3ft radius for an individual to walk around the column or drape that is no closer than 1ft to the column. All wraps must be made of flame retardant material. If the fire hose or fire extinguisher is not visible, you must have signage indicating that a fire extinguisher is located behind the covering you have placed.

Electrical feeds are labeled "100 amp feeds" on the column detail drawings attached. Like the fire extinguishers, they can be covered but need to be accessible. No Signage is needed indicating the location of the feed.

Electrical feed box sizes:

100 amp distribution panel  
13"d x 13"w x 4"h

400amp distribution panel  
13"d x 18"w x 4.5"h

***NOTE: The portion of the column above the fire equipment base is treated with a spray-on fire coating which tends to flake when hanging signs/banners. Additional cleaning services may be recommended.***

#### **Need to know what type of column you have within your booth space?**

Contact Karen Frank at Karen.frank-lopez@ubm.com for a detailed booth diagram of the column within your space.

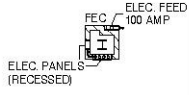
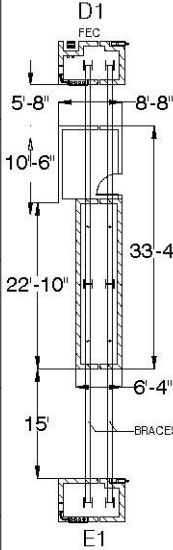
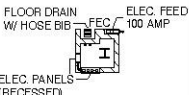
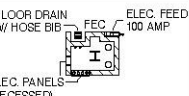
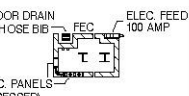
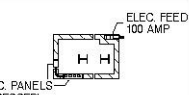
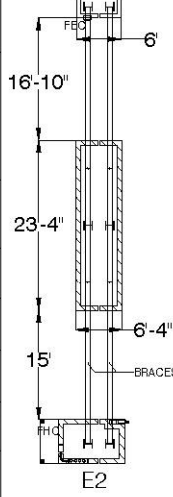

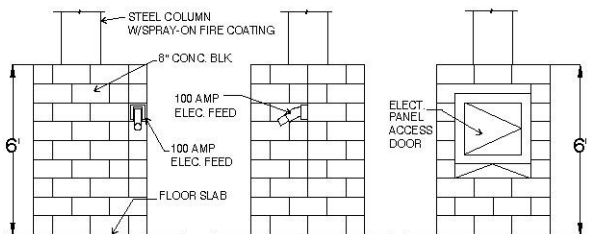
#### **Need help wrapping a column?**

GES is available for hire to professionally wrap and utilize your column's vertical space as a promotion tool. Contact GES at (702) 515-5970 or [www.GES.com/chat](http://www.GES.com/chat)







# SHOW RULES AND REGULATIONS

## COLUMN WRAPPING

### BUILDING COLUMN LEGEND

TYPE	DETAIL	BASE DIMENSIONS	COLUMNS WITH BRACES
A1		4' x 4'	 D1 FEC 5'-8" 8'-8" 10'-6" 33'-4" 22'-10" 6'-4" 15' BRACES E1
B1		6' x 5'-4"	
C1		6' x 5'-4"	
D1		6' x 9'	
E1		6' x 9'	
			 E2 16'-10" 23'-4" 15' 6'-4" BRACES
BUILDING INFORMATION			
 - INDICATES ELECTRICAL FLOOR BOX			
FE - FIRE EXTINGUISHER CABINET (KEEP CLEAR)			
FHC - FIRE HOSE CONNECTION (KEEP CLEAR)			
ELECTRIC, WATER, AIR, & GAS AVAILABLE AT COLUMNS			
CEILING HEIGHT: 30 FT.			
 TYPICAL COLUMN BASE ELEVATIONS (COLUMN BASE FOOTPRINTS, FEATURES & DIMENSIONS VARY BY COLUMN)			

### BUILDING COLUMN LEGENDS - halls D,F

TYPE	DETAIL	BASE DIMS
H1	VOLTAGE BOX 	4'X4'
I1	FLOOR AREA DRAIN 	4'X4'
J1	ELECTRICAL BOX HOSE BIB 	4'X4'
K1		4'X6'-8"
L1	HOSE BIB 	4'X6'-8"
M1	HOSE BIB FLOOR DRAIN 	4'X4'

### Need to know what type of column you have within your booth space?

Contact Karen Frank at [Karen.frank-lopez@ubm.com](mailto:Karen.frank-lopez@ubm.com) for a detailed booth diagram of the column within your space.

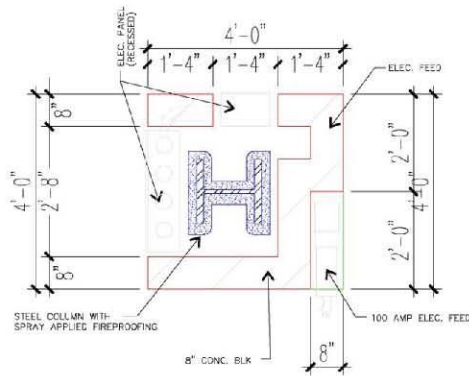
### Need help wrapping a column?

GES is available for hire to professionally wrap and utilize your column's vertical space as a promotion tool.

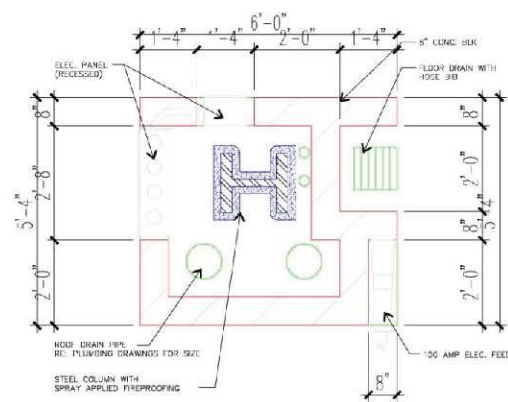
Contact GES at (702) 515-5970 or [www.GES.com/chat](http://www.GES.com/chat)

# SHOW RULES AND REGULATIONS

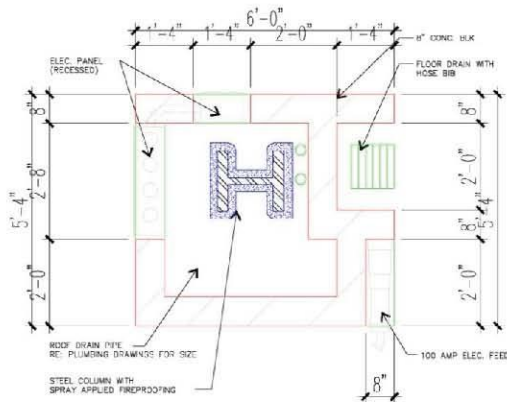
## COLUMN WRAPPING



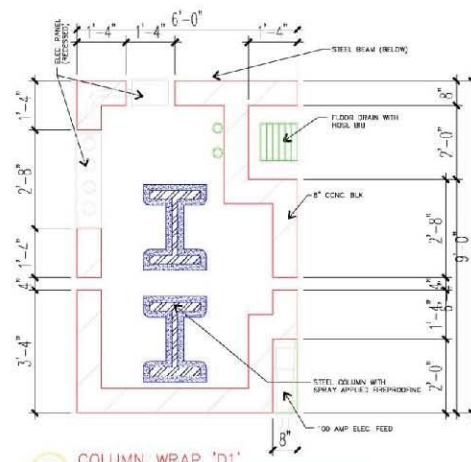
**A1** COLUMN WRAP 'A1'  
SCALE: 3/4" = 1'-0"



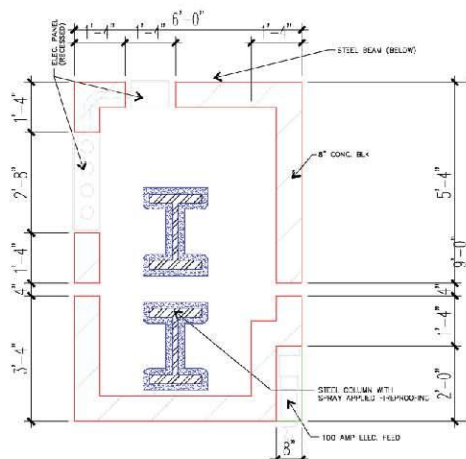
**B1** COLUMN WRAP 'B1'  
SCALE: 3/4" = 1'-0"



**C1** COLUMN WRAP 'C1'  
SCALE: 3/4" = 1'-0"



**D1** COLUMN WRAP 'D1'  
SCALE: 3/4" = 1'-0"



**E** COLUMN WRAP 'E'  
SCALE: 3/4" = 1'-0"

### **Need to know what type of column you have within your booth space?**

Contact [Karen.frank-lopez@ubm.com](mailto:Karen.frank-lopez@ubm.com) for a detailed booth diagram of the column within your space.

### **Need help wrapping a column?**

GES is available for hire to professionally wrap your column. Contact GES at (702)515-5970 or [www.GES.com/chat](http://www.GES.com/chat)