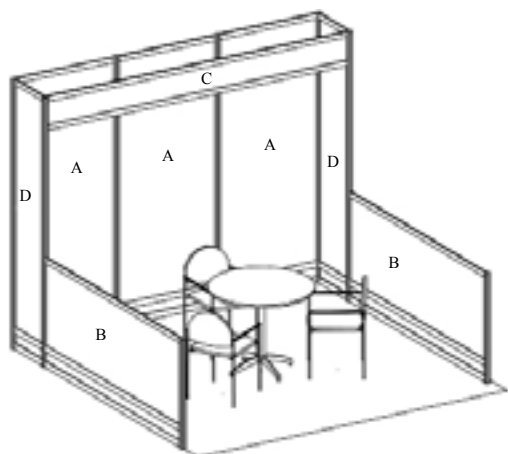


PRE-ORDERED BOOTH PACKAGES

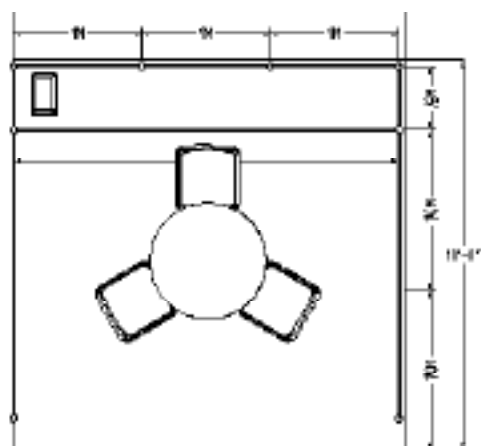
TURNKEY PACKAGE TECHNICALS 10X10 LINEAR BOOTH

Modifications & substitutions to the Turnkey Package are not allowed. Custom graphics, cleaning, vacuuming and additional electricity (if needed) is not included and can be ordered at the exhibitor's expense.

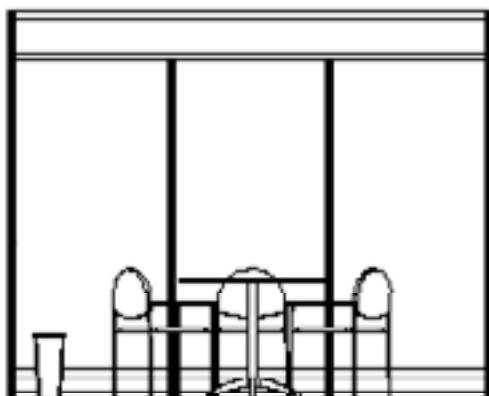


Perspective View

Qty	Type	Size	Visual Opening	Material	Color
3	Wall Panel (A)	38 ¹ / ₈ "W x 86 ¹ / ₄ "H	37 ⁹ / ₁₆ "W x 85 ³ / ₈ "H	PVC	Choice
2	Wall Panel (B)	77 ¹ / ₂ "W x 30 ¹³ / ₁₆ "H	76 ¹⁵ / ₁₆ "W x 29 ⁵ / ₁₆ "H	PVC	Choice
1	ID Sign (C)	116 ⁷ / ₈ "W x 12"H	116 ⁵ / ₁₆ "W x 11 ¹ / ₈ "H	PVC	Choice
2	Wall Panel (D)	18 ¹ / ₂ "W x 86 ¹ / ₄ "H	17 ⁷ / ₈ "W x 8 ³ / ₈ "H	PVC	Choice
3	Chairs (300051)			Fabric	Black
1	Table (300058)			Laminate	Black/Gray
1	Wastebasket (300113)				
1	Carpet	9'x10'			Choice
200 lbs. material handling for PRODUCT ONLY					



Birds Eye View



CHOOSING TO HANG YOUR OWN GRAPHICS?

NOTE: Booth packages are the property of GES. All graphics & hanging materials used to affix them must be completely removed from walls and furnishings upon departure in order to avoid cleaning fees.

FOR MORE INFORMATION ABOUT THIS BOOTH PACKAGE

Including payment, graphics, package options and/or upgrades, please contact:

GES National Servicercenter

Phone: 702-515-5970

Toll Free: 800-475-2098

FAX Domestic: 866-329-1437

FAX International: 702-263-1520

WWW.GES.COM/CHAT

The description above is based on the 10' x 10' booth package. As booth size increases, booth package items/contents are multiplied accordingly.

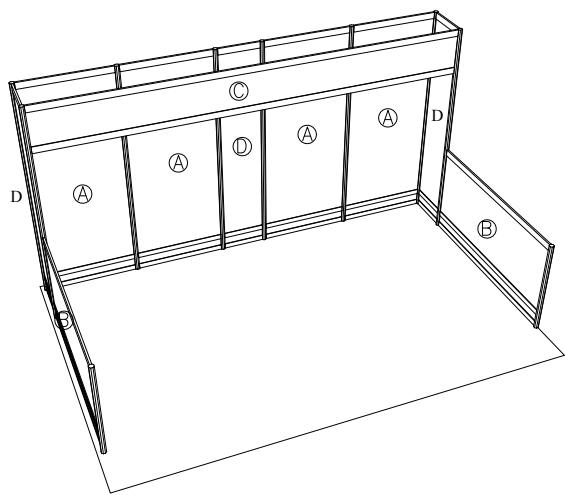
PRE-ORDERED BOOTH PACKAGES

TURNKEY PACKAGE TECHNICALS 10X15 LINEAR BOOTH

Modifications & substitutions to the Turnkey Package are not allowed. Custom graphics, cleaning, vacuuming and additional electricity (if needed) is not included and can be ordered at the exhibitor's expense.



Qty	Type	Size	Visual Opening	Material	Color
4	1M Wall Panel (A)	38 ³ / ₁₆ "W x 86 ¹ / ₄ "H	37 ⁹ / ₁₆ "W x 85 ³ / ₈ "H	PVC	Choice
2	1/2 Wall Panels (B)	77 ⁹ / ₁₆ "W x 30 ¹ / ₄ "H	76 ¹⁵ / ₁₆ "W x 29 ⁵ / ₁₆ "H	PVC	Choice
1	Header Panels (C)	176"W x 12"H		PVC	Choice
3	Wall Panel (D)	18 ¹ / ₂ "W x 86 ¹ / ₄ "H	17 ⁷ / ₈ "W x 8 ³ / ₈ "H	PVC	Choice
3	Chairs (300051)			Fabric	Black
1	Table (300058)			Laminate	Black/Gray
1	Wastebasket (300113)				
1	Carpet	10'x15'			Choice
200 lbs. of product on-site material handling					



PERSPECTIVE VIEW

CHOOSING TO HANG YOUR OWN GRAPHICS?

NOTE: Booth packages are the property of GES. All graphics & hanging materials used to affix them must be completely removed from walls and furnishings upon departure in order to avoid cleaning fees.

FOR MORE INFORMATION ABOUT THIS BOOTH PACKAGE

Including payment, graphics, package options and/or upgrades, please contact:

GES National Servicer

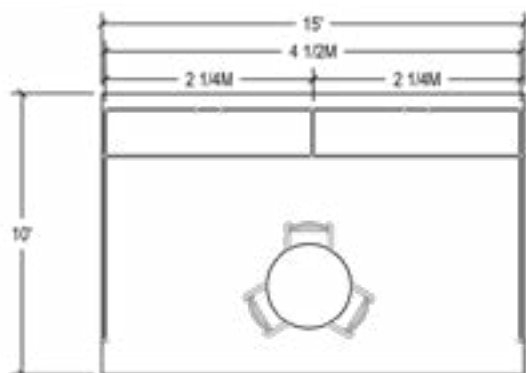
Phone: 702-515-5970

Toll Free: 800-475-2098

FAX Domestic: 866-329-1437

FAX International: 702-263-1520

WWW.GES.COM/CHAT



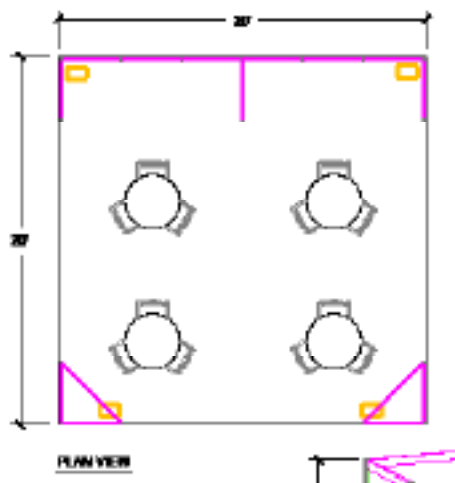
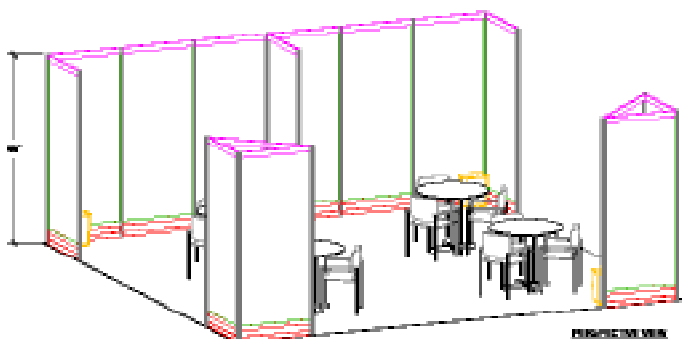
PRE-ORDERED BOOTH PACKAGES

TURNKEY PACKAGE TECHNICALS 20X20 SPLIT ISLAND BOOTH

Modifications & substitutions to the Turnkey Package are not allowed. Custom graphics, cleaning, vacuuming and additional electricity (if needed) is not included and can be ordered at the exhibitor's expense.



Qty	Type	Size	Visual Opening	Material	Color
13	1M Wall Panels	38 ^{1/8} "W x 86 ^{1/4} "H	37 ^{9/16} "W x 85 ^{3/8} "H	PVC	Choice
12	Chairs (300051)			Fabric	Black
4	Table (300058)			Laminate	Black/Gray
4	Wastebasket (300113)				
	400 lbs. material handling for PRODUCT ONLY				
1	Carpet	20'x20'			Choice



CHOOSING TO HANG YOUR OWN GRAPHICS?

NOTE: Booth packages are the property of GES. All graphics & hanging materials used to affix them must be completely removed from walls and furnishings upon departure in order to avoid cleaning fees.

FOR MORE INFORMATION ABOUT THIS BOOTH PACKAGE

Including payment, graphics, package options and/or upgrades, please contact:

GES National Servicer
Phone: 702-515-5970
Toll Free: 800-475-2098
FAX Domestic: 866-329-1437
FAX International: 702-263-1520
WWW.GES.COM/CHAT

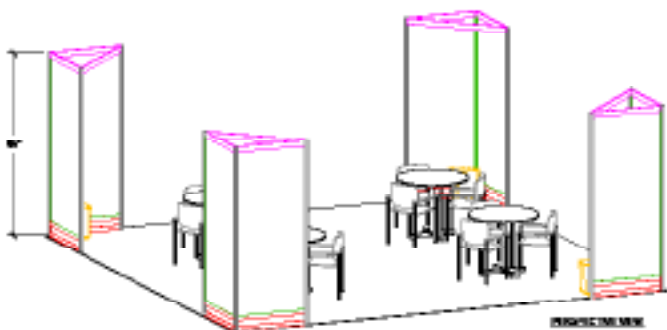
PRE-ORDERED BOOTH PACKAGES

TURNKEY PACKAGE TECHNICALS 20X20 ISLAND BOOTH

Modifications & substitutions to the Turnkey Package are not allowed. Custom graphics, cleaning, vacuuming and additional electricity (if needed) is not included and can be ordered at the exhibitor's expense.



Qty	Type	Size	Visual Opening	Material	Color
8	Wall Panel	38 ^{1/8} "W x 86 ^{1/4} "H	37 ^{9/16} "W x 85 ^{3/8} "H	PVC	Choice
12	Chairs (300051)			Fabric	Black
4	Table (300058)			Laminate	Black/Gray
4	Wastebasket (300113)				
1	Carpet	20'x20'			Choice
400 lbs. material handling for PRODUCT ONLY					



CHOOSING TO HANG YOUR OWN GRAPHICS?

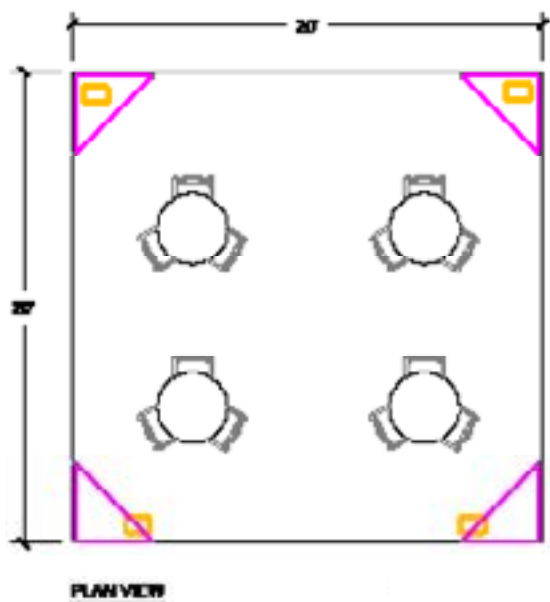
NOTE: Booth packages are the property of GES. All graphics & hanging materials used to affix them must be completely removed from walls and furnishings upon departure in order to avoid cleaning fees.

FOR MORE INFORMATION ABOUT THIS BOOTH PACKAGE

Including payment, graphics, package options and/or upgrades, please contact:

GES National Servicer
Phone: 702-515-5970
Toll Free: 800-475-2098
FAX Domestic: 866-329-1437
FAX International: 702-263-1520

WWW.GES.COM/CHAT



Deadline: May 31, 2016

HAVE YOU ORDERED A TURNKEY BOOTH PACKAGE?

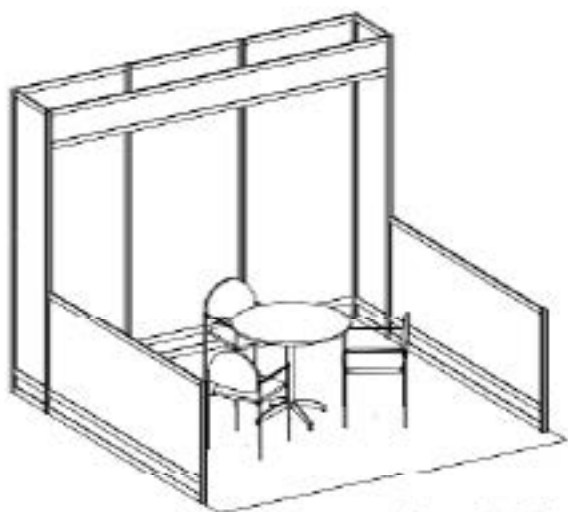
Within the Turnkey booth package you have a few customizable options in regards to carpet & wall color. Please fill out this form to let us know how you would like your package set up for the show.

If we do not receive your submission by the above date we will set booth to the DEFAULT: Black carpet and White walls, any changes made on-site to carpet or walling per the exhibitor's request will be charged directly to the exhibitor at the on-site carpenter rate!

Company Name: _____ Booth # _____

Contact: _____

Phone Number: _____ E-Mail Address: _____



CARPET COLOR

Please check one box:

Black (41) ☐

Blue (42) ☐

Blue Jay (56) ☐

Burgundy (43) ☐

Emerald Green (44) ☐

Gray (40) ☐

Pepper (52) ☐

Red (49) ☐

WALL COLOR

Please check one box:

Black ☐

Blue ☐

Red ☐

White ☐

Complete and return this form by MAY 31, 2016 to GES

GES National Servicercenter

Phone: 702-515-5970

Toll Free: 800-475-2098

FAX Domestic: 866-329-1437

FAX International: 702-263-1520

WWW.GES.COM/CHAT