

RULES & REGULATIONS

DO YOU HAVE A COLUMN IN YOUR BOOTH?

NEW

FOR EXHIBITORS WITH COLUMNS LOCATED WITHIN THEIR CONTRACTED BOOTH SPACE

Every column has a fire strobe on each of its 4 sides, located APPROXIMATELY 11'6" up. Strobes are 6.5" high, 5" wide and 1.16" deep. Strobes must remain visible throughout the exhibit hall at all times. Signage that blocks the sightlines to the strobes is not allowed under any circumstances.

Many columns have a fire hose cabinet and/or fire extinguisher cabinet which must remain accessible at all times. If you are planning a covering for a column you must provide access to the fire equipment (see below criteria). ALL material used must be made of flame retardant material.

COLUMNS WITH FIRE EXTINGUISHER CABINETS (FECs) WRAPPING CRITERIA:

Hard Structure/Walling/Drape

- Must have a door that provides direct access to the fire extinguisher. The front of the door cannot be blocked by any other object/structure within a 30 inch radius. In addition, if the fire extinguisher is not visible behind the door, exhibitor must provide signage indicating that fire equipment is located behind the hard wall.
- Exhibitors may choose to provide their own fire extinguisher instead of a door so long as the fire extinguisher is accessible in the same location and that signage clearly indicates that fire equipment is located behind.
- Electrical feeds must also be accessible. No signage is required for electrical feeds.
- The hard structure/wall/drape may directly abut the base of the column so long as fire equipment and electrical feeds are accessible as described above.

COLUMNS WITH FIRE HOSE CABINETS (FHCs)

Fire House Cabinets (FHCs) must visible at all times, any sort of obstruction is prohibited.

Electrical feeds must also be accessible.

No signage is required for electrical feeds.

Electrical feed box sizes:

100 amp distribution panel	400amp distribution panel
13"d x 13"w x 4"h	13"d x 18"w x 4.5"h

NOTE: The portion of the column above the fire equipment base is treated with a spray-on fire coating which tends to flake when hanging signs/banners. Additional cleaning services may be recommended.

RULES & REGULATIONS

DO YOU HAVE A COLUMN IN YOUR BOOTH?

NOTE:

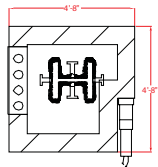
COLUMN + BEAMS ARE COVERED WITH APPROXIMATELY 1 $\frac{1}{2}$ " OF FLAME RESISTANT COATING.

NOTE:

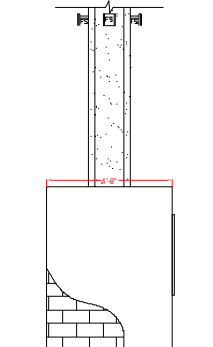
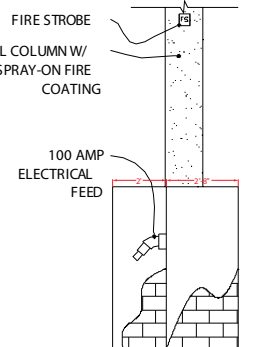
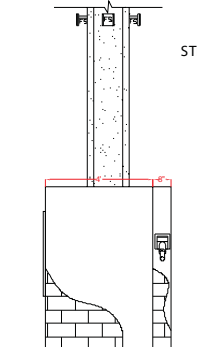
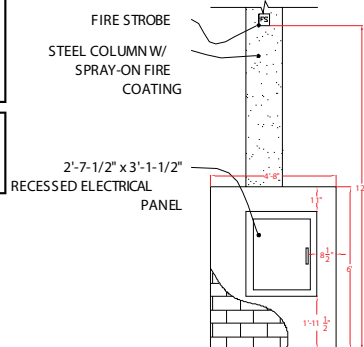
SOME COLUMN TYPES MAY BE MIRRORED. MIRRORED COLUMNS WILL HAVE "M" AFTER COLUMN TYPE. REFER TO FLOOR PLAN FOR THOSE COLUMNS.

NOTE:

COLUMNS OF THIS TYPE MAY HAVE FIRE EQUIPMENT LOCATED ON IT. REFER TO FLOOR PLAN.



FLOOR PLAN VIEW



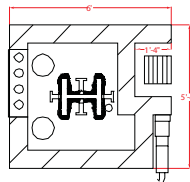
COLUMN TYPE A1

NOTE:

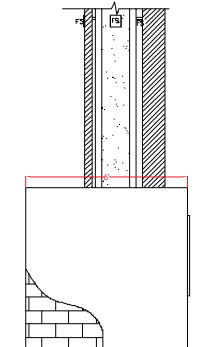
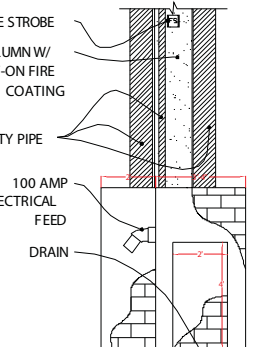
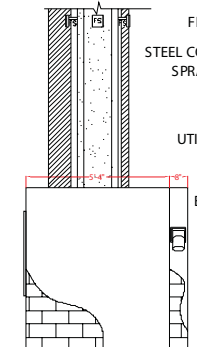
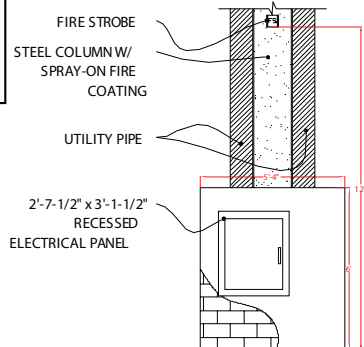
COLUMN + BEAMS ARE COVERED WITH APPROXIMATELY 1 $\frac{1}{2}$ " OF FLAME RESISTANT COATING.

NOTE:

SOME COLUMN TYPES MAY BE MIRRORED. MIRRORED COLUMNS WILL HAVE "M" AFTER COLUMN TYPE. REFER TO FLOOR PLAN FOR THOSE COLUMNS.



FLOOR PLAN VIEW



COLUMN TYPE B1

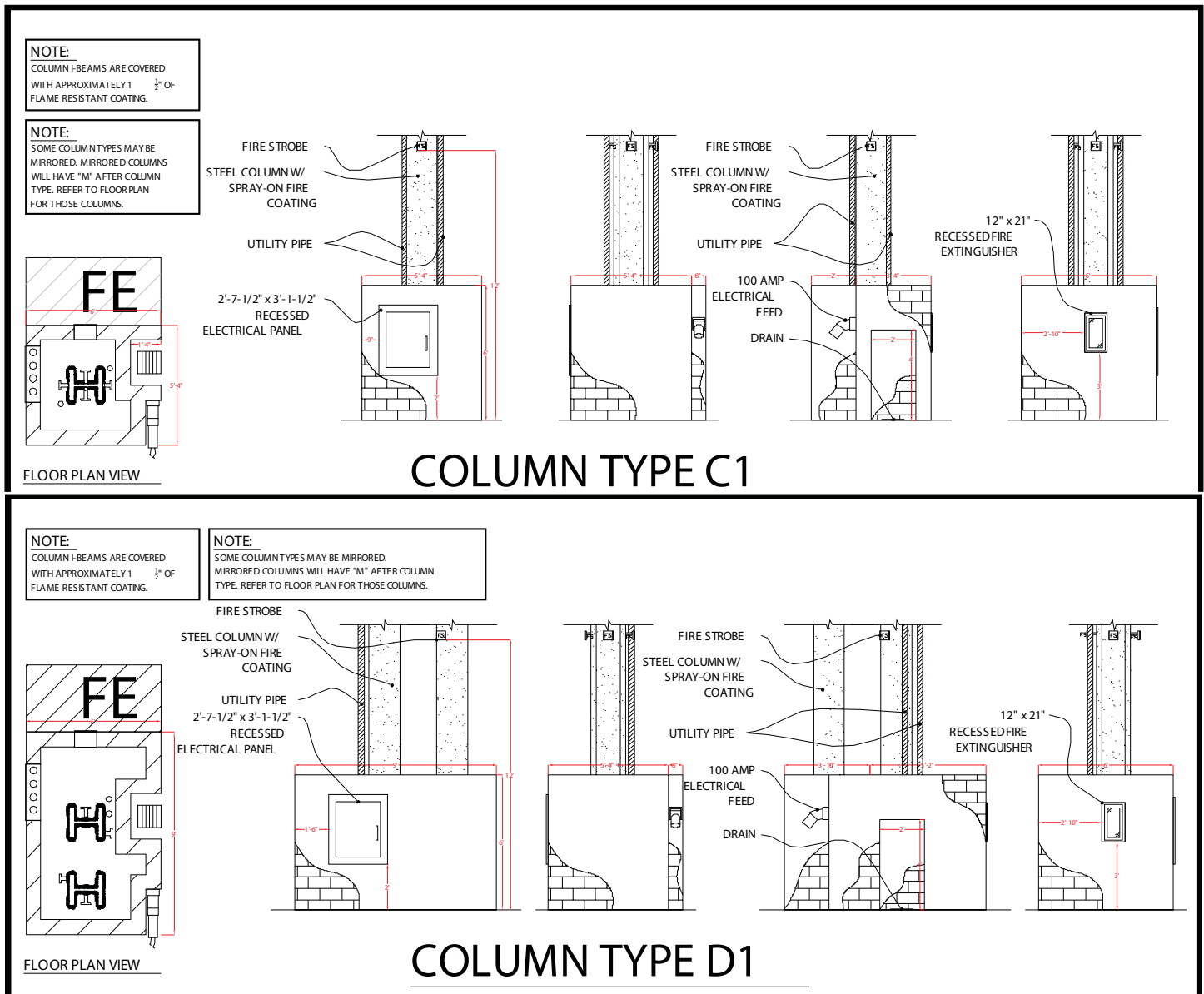
Need to know what type of column you have within your booth space?

Contact Jeanne Paloma at jpaloma@advanstar.com or (310) 857-7666 for a detailed booth diagram of the column within your space.

Need help wrapping a column?

GES is available for hire to professionally wrap and utilize your column's vertical space as a promotion tool. Contact Heather Hodge at (702) 515-5568 or hhodge@ges.com.

DO YOU HAVE A COLUMN IN YOUR BOOTH?



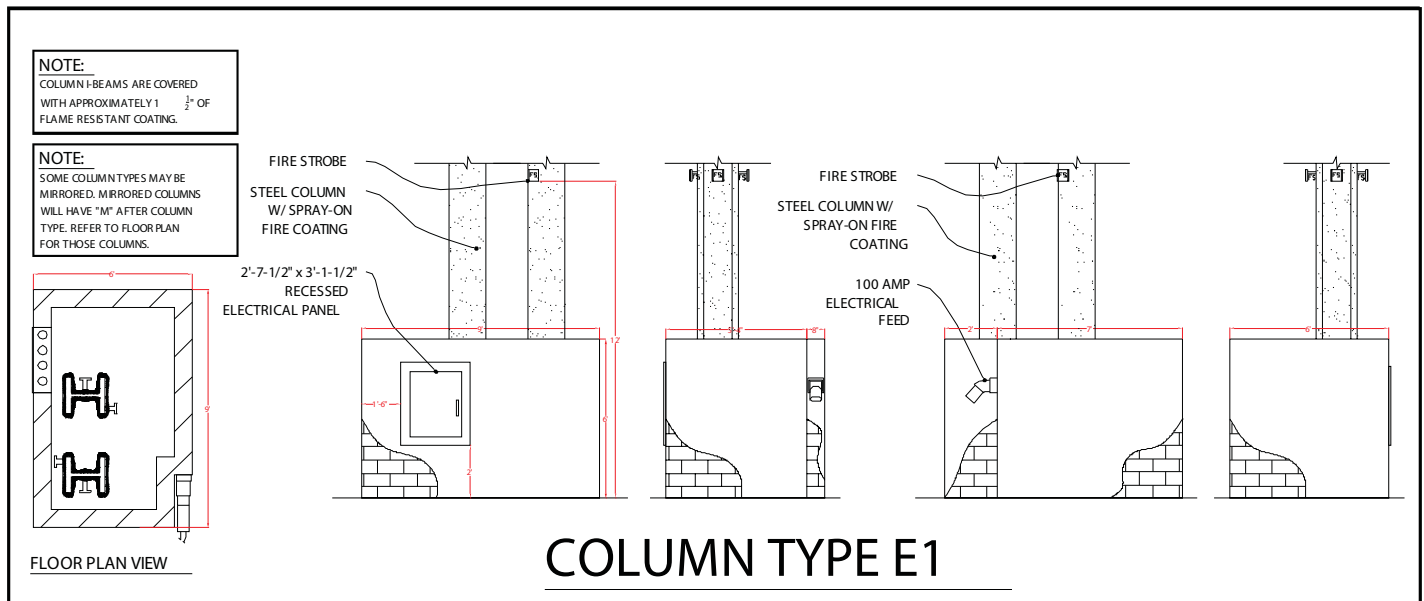
Need to know what type of column you have within your booth space?

Contact Jeanne Paloma at jpaloma@advanstar.com or (310) 857-7666 for a detailed booth diagram of the column within your space.

Need help wrapping a column?

GES is available for hire to professionally wrap and utilize your column's vertical space as a promotion tool. Contact Heather Hodge at (702) 515-5568 or hhodge@ges.com.

DO YOU HAVE A COLUMN IN YOUR BOOTH?



Need to know what type of column you have within your booth space?

Contact Jeanne Paloma at jpaloma@advanstar.com or (310) 857-7666 for a detailed booth diagram of the column within your space.

Need help wrapping a column?

GES is available for hire to professionally wrap and utilize your column's vertical space as a promotion tool. Contact Heather Hodge at (702) 515-5568 or hhodge@ges.com.